



Island County Community Health Advisory Board (CHAB)

Friday, June 2nd, 2023, 11:00am – 1:00pm

Commissioners Hearing Room B102, Coupeville Annex Building

[Click here to join the meeting](#) or Call +12532158782 ID: 945 2101 9995

Passcode: 087548

Meeting Agenda

- 11:00 **Opening Ceremonies** Taylor Lawson
- Call to Order
Roll Call & Determining of Quorum
Agenda Review
- 11:05 **Review of Meeting Minutes** Rene Denman
- May 5, 2023 Meeting Minutes*
Action Requested: Review and approve
- 11:10 **Public Comment**
- An opportunity is provided for all guests to share any community issues or events that may be of interest or relevant to those present.*
- 11:15 **Consent Agenda**
- Actions Requested: Nomination/ Vote/ Approval*
1. New Member Nomination – Nicole Rice Rene Denman
Attachments: CHAB Sector Representation, Candidate Summary
2. Chair Nomination & Vice-Chair Updates Rene Denman
Actions Requested: Chair Nomination/ Vote and Vice-Chair Request
- 11:35 **Regular Agenda**
3. Check-In & Discussion: April Board of Health Meeting Taylor Lawson
Actions Requested: Discussion
4. Break (5 minutes)
5. DEI Updates & Planning Erin Lavery-Mullins
Actions Requested: Discussion
- 12:15 **Comments by Membership** CHAB Membership
- 12:30 **Staff Updates**
- Public Health
Human Services
- 1:00 **Adjourn**

“The purpose of the Advisory Board is to promote public participation in and identification of public health needs, to develop public health policies and procedures by which Island County can address those needs, and to assist in assuring that health needs are met for citizens of Island County”

CHAB Sectors/Groups		New 2022 Member			Total	
1	Health care access and quality	Heidi Beck(Oak Harbor)	Erin Lavery (Camano)	Chari McRill (Oak Harbor)	Vacant	4
2	Physical environment, including built and natural environments	Bob Uhrich (Camano)	Marine Resource Advisory Committee			2
3	Social and economic sectors, including housing, basic needs, education, an employment	Vacant	Vacant			2
5	Business, Philanthropy	Michele Aguilar Kahrs (Freeland)	Restaurant Business (TBD)			2
4	Government	Kim Williams (Camano)	Ex-Officio BOH Member (TBD)			2
6	Tribal communities and tribal government	Requires outreach				1
7	Consumers of public health services	Deborah Ferguson (Camano)	Water Advisory Committee	Alma Johnser (Oak Harbor)		3
8	Community members with lived experience in any of the areas listed in (a) of this subsection	Beth Rahi (Clinton)	Vacant			2
9	Community stakeholders including non-profit organizations, the business community, and those regulated by public health.	Melissa Brown (Oak Harbor)	WSU- Waste Wise, WSU- Food Systems	Rene Denman (Oak Harbor)		3
					Total	21

Nicole Rice

Community Health Advisory Board Bio

Presented at the June 2, 2023 CHAB Meeting

Ms. Rice is a dedicated nursing leader with over five years of experience offering proven clinical knowledge, interdisciplinary collaboration, and quality-focused care and support for patients. Her experience as a nurse makes her well suited to assess community needs and to implement interventions that effectively address those needs. Her educational background as an advanced practice nurse further emphasizes her critical thinking and program implementation and evaluation skills. Ms. Rice brings a wealth of knowledge and experience evaluating and improving workflows, building partnerships with community providers and residents, and providing support and care in a variety of settings. Ms. Rice is currently completing her Doctorate in Nursing Practice in Health Systems Leadership with an emphasis on Church-based health education and intervention for hypertension management in the African American community. Ms. Rice has a strong passion for “addressing the health disparities frequently faced by communities of color and underserved communities with limited access to health care resources.” Ms. Rice’s vision for a healthier future for Island County “is equitable access to health care resources, health education, and quality care for all who reside in Island County.”

Community Health Assessment Summary



June 2023

02

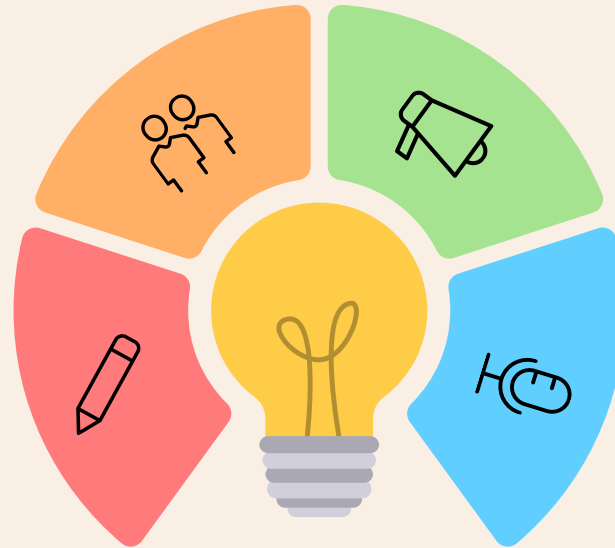
Community Partner Assessment

The Community Partners Assessment (CPA) is an assessment process that allows all the community partners involved in MAPP to critically look at 1) their own individual systems, processes, and capacities and 2) their collective capacity as a network/across all community partners to address health inequities

01

Community Status Assessment

The Community Status Assessment (CSA) is a community-driven quantitative data assessment aimed at understanding the community's status. It helps communities move upstream and identify inequities beyond health behaviors and outcomes, including their association with social determinants of health and systems of power, privilege, and oppression.



03

Community Context Assessment

The Community Context Assessment (CCA) is a qualitative data assessment tool aimed at harnessing the unique insights, expertise, and perspectives of individuals and communities directly impacted by social systems to improve the functioning and impact of those systems.

04

Community Health Assessment & Community Health Improvement Plan

We use information collected and learned throughout steps 1-3 to develop a Community Health Assessment (CHA) that will inform the development of the Community Health Improvement Plan (CHIP). The CHIP involves establishing measurable short- and long-term goals that we can work towards to "move the needle" on issues AND assets identified in the CHA.



2023 - 2024 CHA WORKPLAN

