

## **EMERGENCY SUPPORT FUNCTION 1**

### **TRANSPORTATION**

**ICS FUNCTION:** Transportation Coordinator

**LEAD:** Island Transit, Island County Public Works

**SUPPORT:** Department of Emergency Management (DEM)  
Public Health and Human Services  
Public School Districts  
Sheriff  
Washington State Patrol (WSP)  
Washington State Ferries (WSF)

#### **I. INTRODUCTION**

**A.** Purpose

To ensure effective coordination and utilization of all available Island County transportation resources during an emergency or disaster

**B.** Scope

This ESF establishes priorities for the allocation of scarce transportation resources and the processing of transportation resource requests in support of other Emergency Support Functions and other Island County jurisdictions.

#### **II. POLICIES**

**A.** Primary emergency transportation coordination responsibility lies with the Island County DEM until the EOC is activated. After EOC activation, responsibilities will be divided between Island Transit serving as the EOC transportation coordinator for the movement of people and Island County Public Works for the opening of roads, movement of equipment, and bulk supplies. These two organizations will coordinate activities in the EOC.

**B.** In accordance with RCW 38.52.110 (1), in responding to a disaster, the Board of Island County Commissioners are directed to utilize the services, equipment, supplies, and facilities of existing departments, offices, and agencies of the state, political subdivisions, and all other municipal corporations thereof including but not limited to districts and quasi municipal corporations organized under the laws of the State of Washington to the maximum extent practical and officers and personnel of

all such departments, offices, and agencies are directed to cooperate with and extend such services and facilities upon request notwithstanding any other provision of law.

### **III. SITUATION**

#### **A. Emergency/Disaster Conditions and Hazards**

1. Critical highways in Island County are State Route (SR) 20 and 525 on Whidbey Island and SR 532 on Camano Island. All other routes are county or municipal roads and streets. There are no designated emergency routes or snow emergency routes. Some waterside routes are marked as tsunami evacuation routes and are only intended to move local traffic to the immediate high ground in the event of a tsunami alert.
2. Critical Island County transportation structures are the bridges leading to Camano and Whidbey Islands. Bridge access to Whidbey Island is further constrained by the SR 20 bridges over the Swinomish Slough on SR 20 and the Rainbow Bridge at La Conner. Camano Island access requires crossing two bridges on SR 532. There is no alternate route.
3. The WSF routes to Whidbey Island (Mukilteo-Clinton and Port Townsend-Keystone) require both terminals to be operational for service. Additionally, the Keystone terminal may not be available due to low tides and strong currents. Total vehicle capacity on each route is determined by three factors: the size of the ferry, the number of ferries on the route, the length in minutes of each route. Camano has no facilities capable of docking a Washington State ferry.
4. Heavy forests and rough terrain limit wheeled vehicle traffic to established roads. Currently a north-south highway chokepoint exists on SR 525 between Race Road and Houston Road on Whidbey Island. There is no alternate route around this road section. The bridge access to Whidbey and Camano Islands may also be considered as choke points since there are no viable alternative vehicle routes.

#### **B. Planning Assumptions**

1. All county owned vehicles not otherwise engaged in emergency or disaster response would be available for use by the Transportation Coordinator in the EOC.

2. Disaster response requiring bulk hauling may require emergency contracting of private resources.
3. Ambulance transportation requirements will likely exceed the capacity of assets in Island County. Off-Island assets may not be available or may not be able to get onto the islands.
4. While school buses may be available for use, qualified drivers may not be available.
5. Available state ferries may limit loads to designated emergency vehicles, emergency supplies, and off island foot traffic only.
6. U.S. Navy mission and security permitting, large volumes of emergency supplies and medical passengers may be airlifted through Ault Field, Naval Air Station Whidbey Island (NASWI). This airfield is capable of handling large commercial passenger aircraft and all types of military aircraft. Outlying Field, Coupeville can also handle many types of aircraft.

#### **IV. CONCEPT OF OPERATIONS - TRANSPORTATION**

##### **A. General**

1. Support for the movement of persons will be coordinated with the incident commander through the Island County EOC.
2. When the EOC is activated, the representative of the Director, Island Transit and the representative of the Director, Island County Public Works will provide transportation coordination for the incident commander (IC).
3. Public Works, city or town maintenance, law enforcement, fire services, parks and recreation, and others will be enlisted to clear abandoned or disabled vehicles from transportation routes by whatever measures necessary to expedite movement of persons away from the hazard zone and to facilitate emergency response vehicle movement.
4. Whenever transportation resources are requested, every attempt will be made to obtain the assigned driver or drivers who are familiar with that type of vehicle or asset.
5. Island County will provide transportation, within its capability, in an emergency/disaster. If transportation requirements exceed the

capabilities of the county, other in-county public and private resources will be utilized as secondary transportation resources.

6. If in-county transportation capabilities are exceeded, DEM or the EOC transportation coordinator will request transportation support through the state EOC.
7. If not required for priority transportation missions, buses may be used for incident command posts (ICP), emergency shelters in inclement weather, or detention centers.
8. Bus communications systems can be used to gather damage assessment and situation information. Bus dispatchers receiving this information will forward it to the communications unit of the EOC by an alternate means of communication (telephone other radio systems).
9. Island County Public Works road personnel will report, through their normal supervisory chain, the conditions of roadways, bridges, and ferry terminals within their operating area. The information will then be sent to DEM or the EOC.
10. Air assets from state organizations, the Civil Air Patrol (CAP) and the Navy may be available for surveillance and damage assessment flights. Neither of these organizations is equipped to evacuate large groups of people or move cargo.

**B. Organization**

1. The Director, DEM or designee will coordinate transportation requests until the EOC is activated.
2. Once the EOC is activated, the representatives of Island Transit and IC public Works will share transportation coordination responsibilities.

**C. Procedures**

1. All transportation requests will be forwarded from the incident staff to the supporting EOC – city or county.
2. For evacuation, the Incident Commander (IC) will determine if area evacuation is necessary and if on-hand assets are adequate. If more transportation is required the IC will notify DEM or the EOC who will then coordinate for the resources.

3. Upon request of the IC or the EOC, Island Transit or school buses (if available) may be used to provide transportation for the following in priority:
  - Movement of special populations
  - Evacuation of the public
  - Movement of emergency workers to and from staging areas
  - Movement of emergency supplies
4. When an emergency is formally declared, Public Works may contract with private companies for the transport of supplies and equipment.

## **V. RESPONSIBILITIES**

### **A. DEM**

1. Coordinate transportation with the IC and other county agencies until the EOC is activated or the need has passed.
2. When in-county transportation capabilities are exceeded, DEM will request transportation resources or support through the state EOC.

### **B. Island Transit**

1. Provide a representative to the EOC to coordinate transportation of people
2. Develop and maintain standing operating procedures (SOP) to support the use of Island Transit resources during an emergency or disaster.
3. Develop and maintain Island County transportation resource lists.
4. Collect and report “windshield” damage assessment and situation reports to the EOC.
5. Record all costs for transportation related to emergency or disaster operations
6. Coordinate for emergency fuel sources for Island Transit vehicles and others that may be assigned.
7. Monitor operations to maintain safe conditions for vehicle drivers to include maximum work hours.

**C. Public Works**

1. Provide a representative to the EOC to coordinate transportation of equipment and supplies.
2. Determine the usable and unusable portions of the Island County road system. Collect and maintain information on the status of city street networks, condition of bridges, and operation of ferry terminals.
3. Recommend priorities for the repair or restoration of local highways, roads, and streets
4. Provide for the removal of wreckage, debris, and the temporary repair of lightly damage roadways and bridges.
5. Provide barricades and signage to prevent public access to county road areas that have been determined to be unsafe or otherwise closed.
6. Coordinate with Island transit, Washington DOT, the IC staff on evacuation routes and assist law enforcement in establishing and controlling evacuation routes.

**D. Supporting Organizations**

1. Island County School Districts
  - a. As first priority, provide safe transportation to students within their jurisdiction in response to an emergency or disaster,
  - b. After district operations are satisfied, make buses, operators, and fuel, available to support emergency operations.
  - c. Develop, maintain transportation resource lists. Provide that list to the DEM office or Island Transit representative.
  - d. Record all costs for transportation related to participation in emergency or disaster response.
  - e. Collect and report road and other damage assessment and situation. Report information to the EOC.

3. Island County Sheriff
  - a. Enforce emergency traffic controls and road closures.
  - b. Through ICOM, coordinate information regarding damaged or impassable roads with DEM and Public Works.
  - c. Assist with planning and control of emergency evacuation routes.
4. Civil Air Patrol, Navy, and other State Aerial Assets
  - a. When available, identify and fly routes to gather damage assessment, traffic, and situational information.
  - b. Provide medical evacuation or individual evacuation within equipment capabilities.
5. Washington State Ferry System (WSF)

Execute emergency plans to expand operating hours and provide extra ferries to move emergency vehicles, equipment, and personnel to Whidbey Island and evacuate medical patients and private citizens from Whidbey Island.
6. Camano Island Yacht Club

Within capability, provide voluntary transportation off of Camano Island to mainland locations coordinated with the Island County and adjacent county chapters of the American Red Cross and adjacent county Department's of Emergency Management.

## **VI. RESOURCE REQUIREMENTS**

- A.** Initial planning for civilian evacuation transportation is 20 persons per bus. This allows for evacuees to bring personal essential luggage and non-hazardous items including pets in carriers or approved airline pet containers.
- B.** Additional personnel will be required to place road and emergency signage, manage traffic control points, and provide relief drivers.

## **VII. REFERENCES**

See CEMP, References

## **VIII. TERMS AND DEFINITIONS**

See CEMP, References, Definitions and Acronyms

### **TABS**

- A.** Island County Airport Runway Information
- B.** Island County Marina information



**TAB A      Island County Airport Runway information**

| <b>Island County Airfields</b>              |                   |                 |                              |
|---|-------------------|-----------------|------------------------------|
| <b>Name</b>                                 | <b>Identifier</b> | <b>Category</b> | <b>Runway Length in Feet</b> |
| <b>Stanwood<br/>(Camano Island)</b>         | 13W               | 4               | 1,750                        |
| <b>Oak Harbor Air<br/>Park</b>              | 76S               | 3               | 3,255                        |
| <b>Whidbey Island<br/>NAS</b>               | NUW               | 1               | 8,000                        |
| <b>OLF Coupeville</b>                       |                   | 1               | 5400                         |
| <b>Langley<br/>(Whidbey (Air<br/>Park))</b> | W10               | 3               | 2400                         |

Data from USDA, Forest Service Airfield/Airstrip Directory, 1 May 2000

See attached airfield data sheets.

## Stanwood / Camano Island Airfield / 13W



### Communications

ATIS .....  
 Tower .....  
 CTAF ..... 122.9  
 Ground .....  
 NDB (LOM) ....  
 APP/DEP .....  
 ILS/DME .....  
 VOT .....  
 CL DEL .....  
 NAVAIDS .....  
 FSS .....  
 UNICOM .....

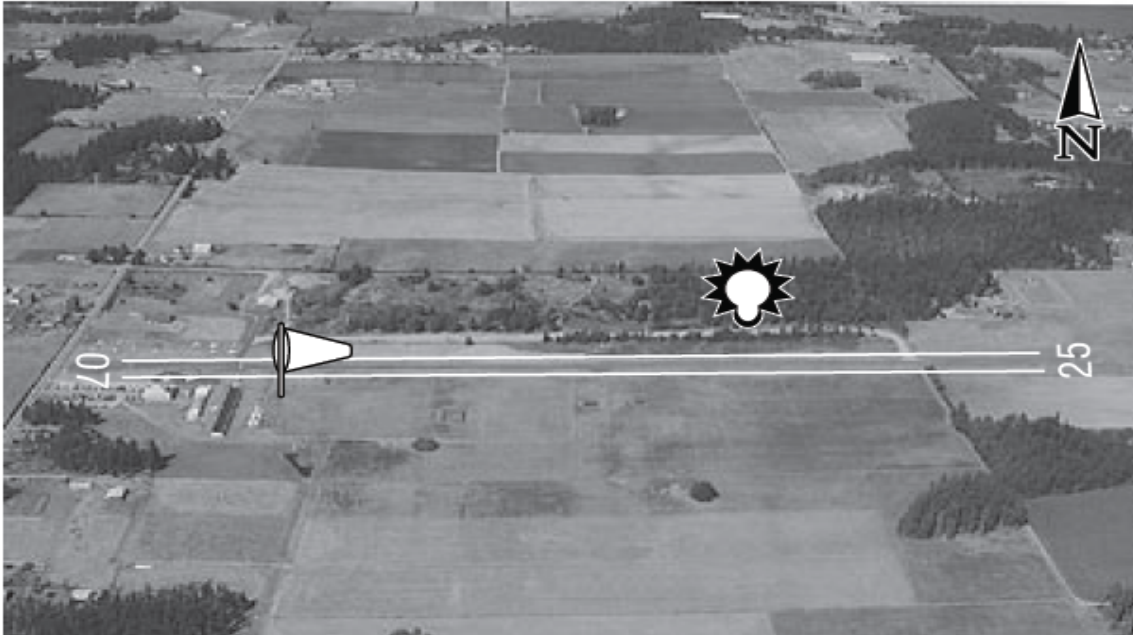
### Navigation

Elevation: ..... 145'  
 Latitude: ..... N 48° 15.42'  
 Longitude: ..... W 122° 26.21'  
 PCL: .....  
 Runway: ..... 16/34; 1750'x24'; Asphalt  
 Lights: .....  
 Indicator: ..... Wind  
 Obstacles: ..... Trees  
 From City: ..... 03 NW  
 TPA: .....

### Services

Fuel: ..... None  
 Services: ..... Major Airframe and  
 Power Plant  
 Manager: ..... 360-629-4812

## Oak Harbor / Wes Lupien / 76S



### Communications

ATIS ..... 134.15 (Whidbey NAS)  
 Tower .....  
 CTAF ..... 122.8  
 Ground.....  
 NDB (LOM) ....  
 APP/DEP ..... 118.2 (Whidbey)  
 ILS/DME .....  
 VOT.....  
 CL DEL.....  
 NAVAIDS ..... 117.2 CVV 060° 2.1 NM  
 FSS .....  
 UNICOM..... 122.8

### Navigation

Elevation: ..... 189'  
 Latitude:..... N 48° 15.09'  
 Longitude:..... W 122° 40.41'  
 PCL: .....  
 Runway:..... 07/25; 3255'x25'; Asphalt  
 Lights:..... NSTD  
 Indicator:..... Wind  
 Obstacles: ..... Trees  
 From City: ..... 03 SW  
 TPA: .....

### Services

Fuel: ..... 100LL  
 Services: ..... Minor Airframe and  
 Power Plant  
 Manager:..... 360-929-6802

**KNUW****Whidbey Island Naval Air Station (Ault Field)**

Oak Harbor, Washington, USA

**1. FAA INFORMATION EFFECTIVE 08 JUNE 2006****2. Location**

FAA Identifier: NUW

Lat/Long: 48-21-06.4900N / 122-39-21.2600W

48-21.108167N / 122-39.354333W

48.3518028 / -122.6559056

(estimated)

Elevation: 47 ft. / 14 m (estimated)

Variation: 21E (1985)

From city: 3 miles N of OAK HARBOR, WA

Time zone: UTC -7 (UTC -8 during Standard Time)

Zip code: 98277

**3. Airport Operations**

Airport use: Private use. Permission required prior to landing

Sectional chart: [SEATTLE](#)

Control tower: yes

ARTCC: SEATTLE CENTER

FSS: SEATTLE FLIGHT SERVICE STATION [1-866-384-7323]

NOTAMs facility: NUW (NOTAM-D service available)

Attendance: CONTINUOUS

Segmented circle: no

Lights: DUSK-DAWN

Beacon: white-white-green (lighted military airport)

**Airport Communications**

ATIS: 134.15 281.5

WHIDBEY GROUND: 121.75 336.4

WHIDBEY TOWER: 127.9 340.2

WHIDBEY APPROACH: 118.2(WEST) 120.7(EAST) 270.8(EAST)  
285.65(WEST)WHIDBEY DEPARTURE: 118.2(WEST) 120.7(EAST) 270.8(EAST)  
285.65(WEST)

CLEARANCE DELIVERY: 124.15 379.9

PRE-TAXI CLEARANCE: 135.1

CLASS C: 285.65(WEST)

CLASS C IC: 118.2(WEST) 120.7(EAST) 270.8(EAST)

EMERG: 121.5 243.0

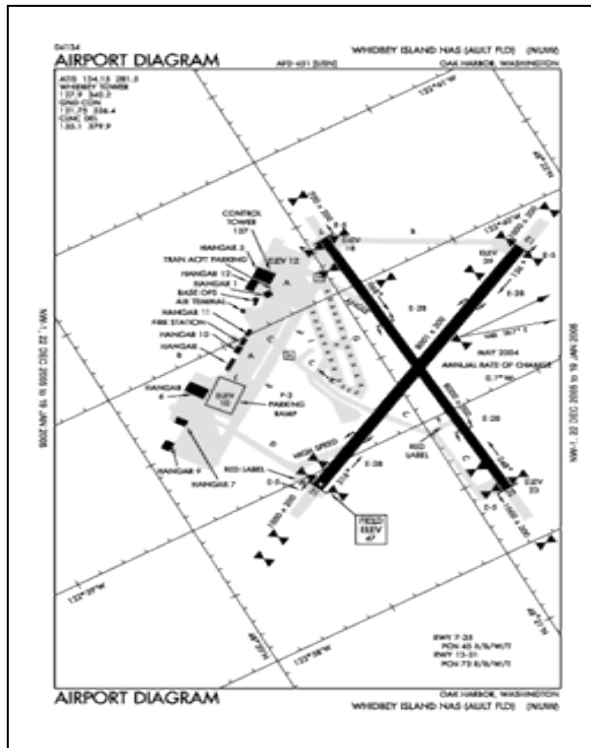
PMSV: 343.4

PTD: 350.1

RDR: 124.15(WEST) 126.05X 126.85X 266.8X 299.6X  
310.8X 322.5X 327.0X 343.75X

WX AWOS-3 at BVS (12 nm NE): 121.125 (360-757-7767)

WX ASOS at FHR (18 nm NW): 135.675 (360-378-8491)



# KNRA Coupeville Naval Outlying Field

Coupeville, Washington, USA



## 4. FAA INFORMATION EFFECTIVE 08 JUNE 2006

### 5. Location

FAA Identifier: NRA

Lat/Long: 48-11-00.0000N / 122-38-00.0000W  
 48-11.000000N / 122-38.000000W  
 48.1833333 / -122.6333333  
 (estimated)

Elevation: 199 ft. / 61 m (estimated)

Variation: 19E (2000)

From city: 3 miles SE of COUPEVILLE, WA

Time zone: UTC -7 (UTC -8 during Standard Time)

Zip code: 98239

### 6. Airport Operations

Airport use: Private use, STRICTLY MILITARY USE ONLY.

Activation date: 02/2001

Sectional chart: [SEATTLE](#)

Control tower: no

ARTCC: SEATTLE CENTER

FSS: SEATTLE FLIGHT SERVICE STATION [1-866-384-7323]

NOTAMs facility: NUW (NOTAM-D service available)

Attendance: MON-FRI 0800-0001

ATNDD OTHER TIMES BY NOTAM

Wind indicator: yes

Segmented circle: no

Lights: DUSK-DAWN

BCN OPRS DUSK-DAWN AND DURG IMC.

### 7. Airport Communications

WX AWOS-3 at AWO (19 nm E): 135.625 (360-435-8045)

WX AWOS-3 at BVS (19 nm NE): 121.125 (360-757-7767)

- WHIDBEY ISLAND NAS (AULT FLD) ATIS AVBL ON FREQ 134.15/280.3.

### 8. Runway Information

#### a) Runway 14/32

Dimensions: 5400 x 200 ft. / 1646 x 61 m

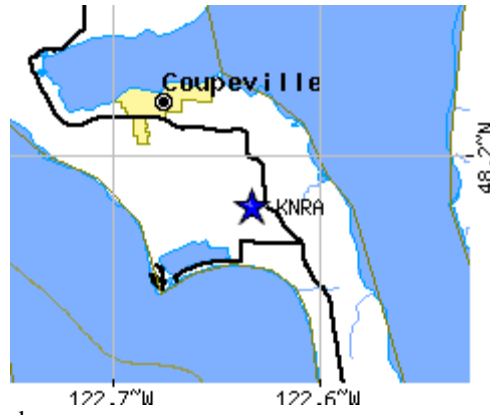
Surface: concrete

Runway edge lights: medium intensity

**RUNWAY 14 RUNWAY 32**

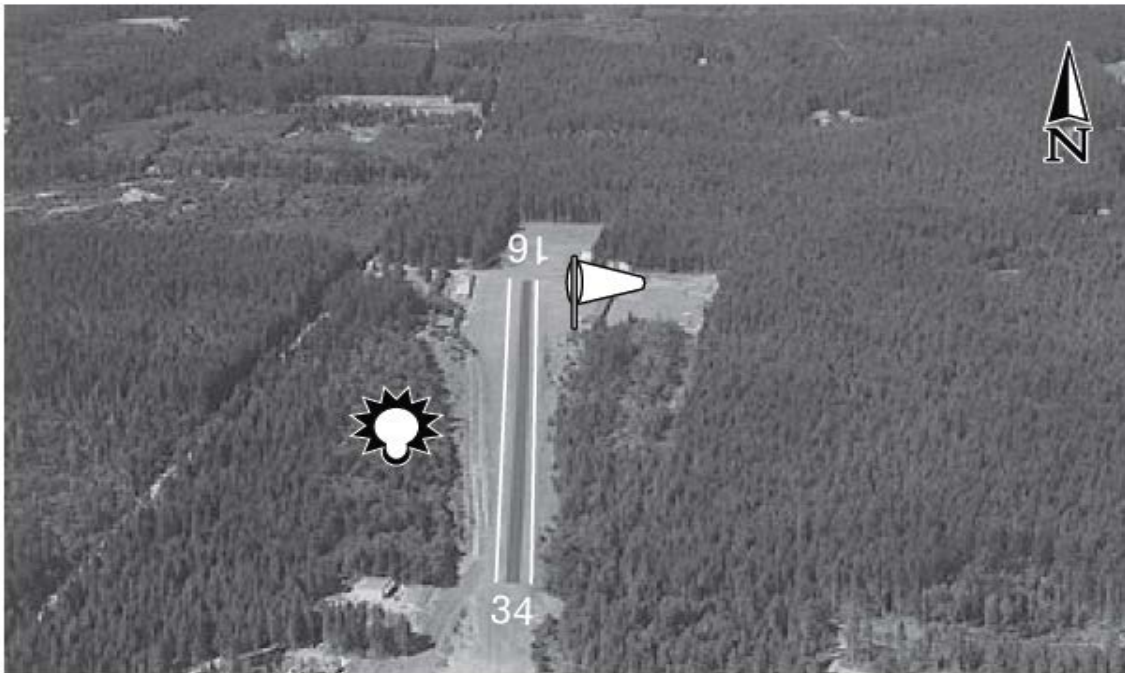
Traffic pattern: right

right



9.  
Central Whidbey Island

## Langley / Whidbey Airpark / W10



### Communications

ATIS .....  
 Tower .....  
 CTAF ..... 122.9  
 Ground.....  
 NDB (LOM) ....  
 APP/DEP .....  
 ILS/DME .....  
 VOT.....  
 CL DEL.....  
 NAVAIDS .....  
 FSS .....  
 UNICOM.....

### Navigation

Elevation: .....260´  
 Latitude:.....N 48° 01.09´  
 Longitude:.....W 122° 26.31´  
 PCL: .....  
 Runway:..... 16/34; 2400´x25´; Asphalt  
 Lights:.....NSTD  
 Indicator:.....Wind; Seg circle  
 Obstacles: ..... Trees  
 From City: .....02 SW  
 TPA: .....

### Services

Fuel: ..... None  
 Services: ..... None  
 Manager:..... 360-341-5531



## **TAB B      Island County Marina information**

### **Port of Coupeville**



The Port of Coupeville offers a 300-foot visitor's dock adjacent to the historic Coupeville Wharf, built in 1900. Boaters are welcome to spend the night here, or dock for an hour to see the town

unfortunately; visiting boaters won't find dockside power, water or telephone hookups here. But a brand-new fuel dock has been added, which is located on the end of the pier. Showers and restrooms are provided across the street from the wharf, at the Island County Historical Society Museum. Harbormaster Jack

Parker can be found in the port office, at the end of the dock, or can be reached at (206) 687-5020 or (206) 678-5197.

At the tip of the wharf, boaters will find the Coupeville Restaurant and Harbor Store, housed in a historic, red building over the water. It stocks a wide range of marine supplies and charts, groceries and fresh seafood, and offers open-air dining under umbrellas on its deck.

If all the dock space is taken, or if there's a minus tide and you draw more than five feet, it's easy to anchor off. Penn Cove has a mud bottom with an average depth of 35 to 40 feet.

### **Langley Small Boat Harbor**

Facilities include 33 slips and a 100-foot floating dock. The small boat harbor does not have fueling dock. Low tide depth in the harbor is approximately 5 feet.

For information contact City of Langley Public Works Department @ 1-360-221-4246 extension 13.

### **Oak Harbor Marina**

Oak Harbor Marina is located in Oak Harbor, Washington. Built in 1974, it is a 420 boat facility with 217 open and 135 covered permanent slips, 52 guest moorage slips, ample side-tie moorage and 96 dry storage garage type sheds accommodating boats to 24' in length. The facility is within walking distance of most retail services, including motels and restaurants in Oak Harbor. Guest moorage is available for boats to 50'.

The Marina fuel dock features mid-grade gasoline at 89-octane or number 2-diesel fuel. Oil and additives are also available. The fuel dock closes thirty minutes before the marina's closing time. Visa and MasterCard are accepted

Tenants of dry storage sheds and transient boaters may launch from the 6500 lb. monorail crane or from the Northwest's largest launching ramp - 100' wide - operable at any tide.

Address: 865 S E Barrington Drive, Oak Harbor, Washington 98277  
Telephone: 360-679-2628  
FAX: 360-240-0603.  
VHF 16 (switch to 68)

**Cornet Bay**

**Deception Pass State Park**

The Cornet Bay launch is open in winter.

The park provides five saltwater and three freshwater boat ramps, plus 710 feet of saltwater dock and 450 feet of freshwater dock.

The park also offers 1,980 feet of saltwater moorage. A boat pump out facility is located at Cornet Bay.