

## Treasurer's Monthly Report

### Financial Data as of October 31, 2025

- Investment Rates and Balances as of October 31, 2025:

DESCRIPTION	RATE
ICT Investment Pool	3.33%
WA State Treasurer LGIP	4.16%
US Treasury, 3 month	3.82%
US Treasury, 6 month	3.81%
US Treasury, 1 year	3.69%
US Treasury, 2 year	3.59%
US Treasury, 3 year	3.59%
US Treasury, 4 year	3.65%
US Treasury, 5 year	3.70%

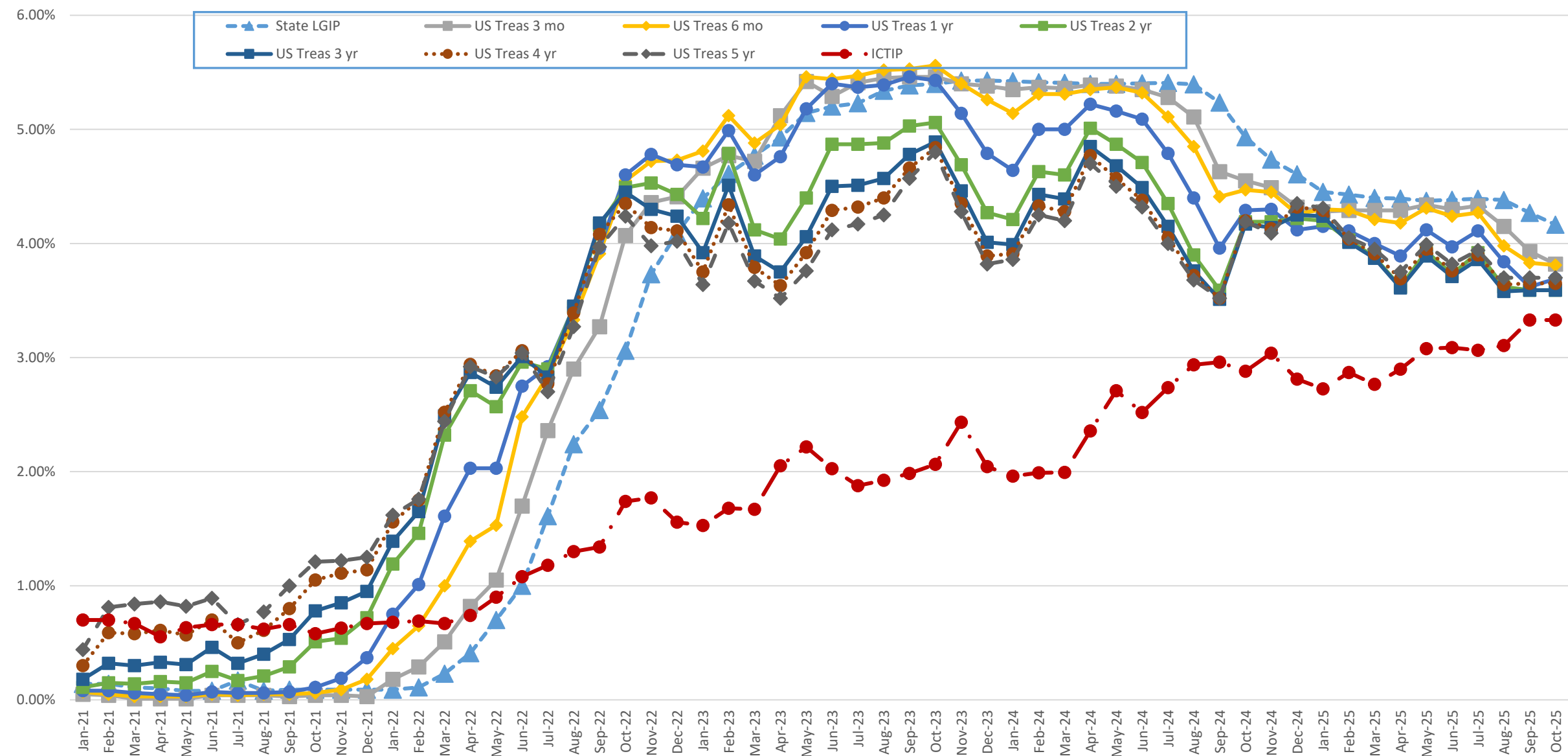
County (Residual) Investment in ICTIP	44%	\$167,361,347
Junior Taxing Districts' Investment in ICTIP	56%	<u>\$214,019,927</u>
Island County Treasurer's Investment Pool		\$381,381,274

- Cash Held for Daily Needs in Depositaries:

Key Bank	\$ 16,945,723
Whidbey Island Bank	<u>\$ 3,005,676</u>
Total Cash Balances	\$ 19,951,399

- 42% of our investment pool is invested in the WA ST LGIP, and 59% is < 1-year maturity (assuming no calls). This satisfies our Investment Policy requirement of 20% of the portfolio as a minimum be comprised of investments maturing within a year to meet ongoing obligations. Two taxing districts have a combined total of approximately \$90MM remaining from their bond proceeds from the past 18 months, which we are currently keeping in the WA ST LGIP.
- As of October 31, 2025, the 2025 property tax levies for Current Expense, Roads, and Conservation Futures were 92% collected. The comparable 2024 YTD collections in October 2024 was 93.4%.
- Foreclosure Update – 2025 started with 101 properties subject to foreclosure. The 2025 Certificate of Delinquency was filed August 4<sup>th</sup>. As of October 31<sup>st</sup>, 11 properties are moving forward to the upcoming auction. The tax foreclosure auction is scheduled for December 2, 2025.
- The number of REET affidavits processed in October was 304 compared to 351 in September and 307 in October 2024. The County's portion of excise revenue was \$345,536 in October, on sales of \$105 MM. This REET activity resulted in Island County YTD excise revenue of **\$423,000 more** than for the same period in 2024, **\$281,000 more** than in 2023, but **\$657,000 less** than in 2022.

Investment Earnings Rate Comparison, January 2021 - October 2025

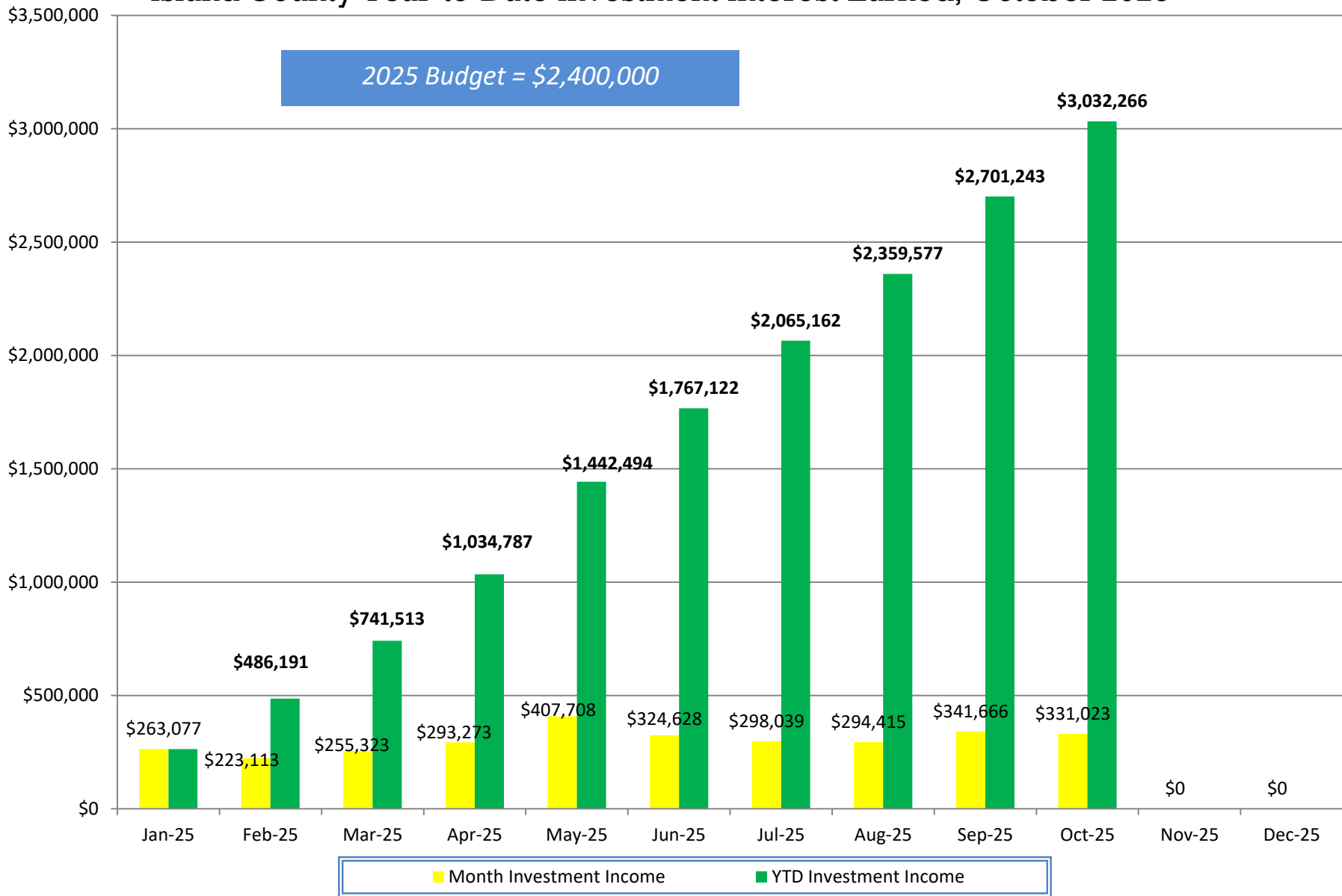


**Island County Treasurer's Investment Pool  
Participant Investment Balances by Fund  
October 31, 2025**

<b>Fund#</b>	<b>Fund Description</b>	<b>Par Value</b>
621	FREELAND WATER/SEWER RESERVE	485,000.00
626	FIRE DISTRICT #5 SICK LEAVE	156,933.43
628	FIRE DISTRICT #1 TRUST	17,050.00
629	FIRE DISTRICT #1 MAINTENANCE	2,078,000.00
631	S201 GENERAL	5,734,478.00
632	S201 ASB	1,035,466.00
633	S201 TRANS VEHICLE	851,665.00
634	S201 BOND REDEMPTION	178,733.00
635	S201 CAPITAL PROJECT	6,045,116.00
637	FIRE DISTRICT #2 EXPENSE	2,925,000.00
638	FIRE DISTRICT #3 EXPENSE	2,808,387.51
640	FIRE DISTRICT #5 MAINTENANCE	2,720,874.00
642	FIRE DISTRICT #1 BOND REDM	587,623.00
643	FIRE DISTRICT #5 CAPITAL	2,718,445.00
644	FIRE DISTRICT #5 BOND	5,000.00
647	SO WHID PARK REC MAINTENANCE	231,826.09
648	NO WHID POOL PARK REC BOND	230.40
649	NO WHID POOL PARK REC RESERVE	551,055.34
651	CEMETERY DISTRICT #1	70,000.00
652	CEMETERY DISTRICT #2	550,000.00
653	PORT COUPEVILLE MAINTENANCE	600,000.00
654	PORT SOUTH WHIDBEY	168,000.00
655	PORT MABANA MAINTENANCE	27,800.00
657	PORT SOUTH WHIDBEY BOND	190,601.20
675	S204 GENERAL FUND	1,000,000.00
676	S204 ASB FUND	134,000.00
677	S204 TRANS VEHICLE	221,699.00
678	S204 BOND REDEMPTION	5,000.00
679	S204 BUILDING	3,150,000.00
683	S206 GENERAL FUND	3,500,000.00
684	S206 ASB	50,000.00
685	S206 TRANSPORTATION VEHICLE	553,500.00
686	S206 BOND REDEMPTION	500,000.00
687	S206 BUILDING (CP)	66,600,000.00
688	S206 CAPITAL PROJECT (CA)	2,080,000.00
690	S206 NONEXP TRUST	838,000.00
696	SARATOGA BOND RESERVE	212,193.49
697	PORT COUPEVILLE IDD FUND	2,000,000.00
701	CLINTON WATER MAINTENANCE	65,334.17
705	LONG BEACH MAINTENANCE	5,129.51
707	PENN COVE MAINTENANCE	1,100,000.00
719	BAYVIEW BEACH EMERGENCY	162,500.00
720	CLINTON WATER CONSTRUCTION	36,487.30
722	LONG BEACH CONSTRUCTION	69,870.49
723	LAGOON POINT CAPITAL	775,000.00
725	CAMANO VISTA CAPITAL IMP	166,000.00
726	FIRE DISTRICT #3 CONTINGENCY ACCT	170,707.00
727	FIRE DISTRICT #3 RESERVE ACCT	53,219.00
728	BAYVIEW BEACH SFR WATERLINE	46,113.00
729	CLINTON BOND	1,890.83
730	CROCKETT LAKE CONSTRUCTION	360,000.00
739	JUNIPER BEACH MAINTENANCE	200,000.00
741	SO WHID PARK REC CONSTRUCTION	13,169,000.00
742	FREELAND CONSTRUCTION	1,615,000.00
755	ISLAND TRANSIT/PTBA	70,000,000.00
758	PENN COVE CONSTRUCTION	1,100,000.00
760	CLINTON WATER CAPITAL	364,440.04
761	ADMIRALS COVE CAPITAL IMPROVEMENT	700,000.00
763	SWANTOWN CAPITAL	175,000.00
764	SCATCHET HEAD WATER EMERGENCY	429,434.44
765	LEDGEWOOD BEACH CAPITAL	21,020.00
766	BAYVIEW BEACH CONSTRUCTION	50,642.00
769	CLINTON WATER SEWER	508.45
771	FIRE DISTRICT #1 CAPITAL FACIL	2,481,871.44
772	HOLMES HARBOR TRUST LOAN	63,152.00
773	LEDGEWOOD BEACH EMERG RESERVE	442,000.00
775	SO WHID PARKS & REC RESERVE	645,688.00
776	FIRE DISTRICT #1 CAPITAL	2,906,923.83
777	FIRE DISTRICT #1 RESERVE	4,321,766.00
779	MAIN STREET SEWER	150,000.00
783	ADMIRALS COVE EMERGENCY RES	103,000.00
785	HOLMES HARBOR CAPITAL IMP	45,603.00
786	HOLMES HARBOR REPLACEMENT	107,482.00
788	NO WHID POOL PARK & REC CAPITAL	8,470.65
789	CLINTON WTR DIST ENCUMBER ACCT	283,696.89
795	CROCKETT LAKE EMERGENCY RES	41,300.00
920	RESIDUAL (ISLAND COUNTY)	167,361,347.08

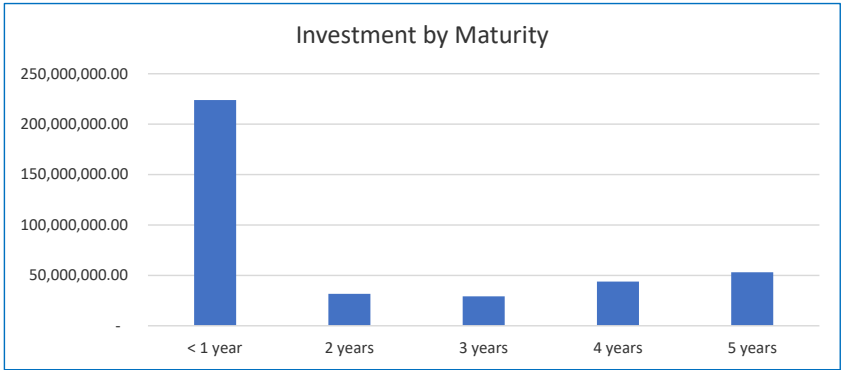
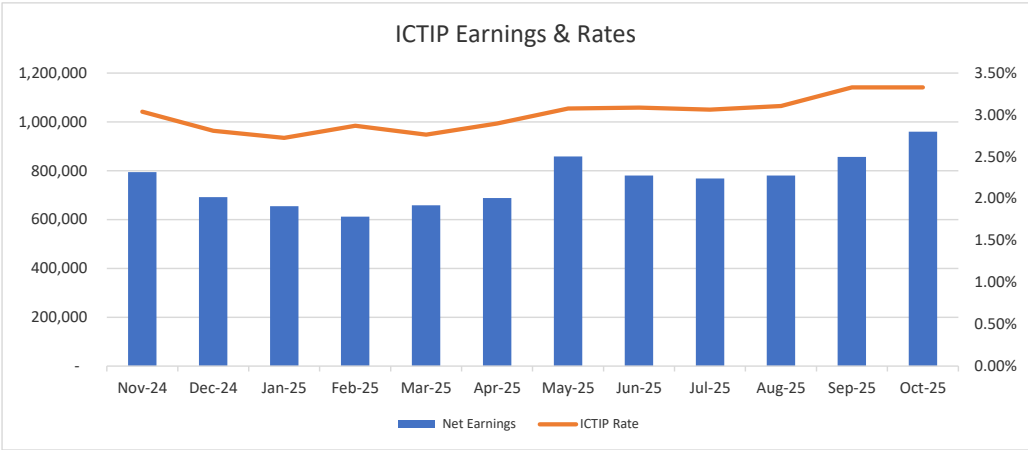
**381,381,273.58**

## Island County Year-to-Date Investment Interest Earned, October 2025



Date: **October 31, 2025**

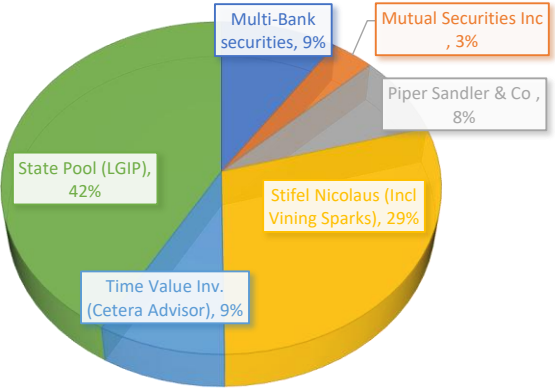
	October-2025	9/30/2025
ICTIP Rate	3.33%	3.33%
LGIP Rate	4.16%	4.27%
Net Earning	\$ 959,785	857,003
as of		
<b>12-Month Average</b>	10/31/2025	9/30/2025
ICTIP Rate	3.01%	2.97%
LGIP Rate	4.42%	4.48%
Net Earning	\$ 758,750	737,220.68
2 Year US Treasury	3.89%	3.94%



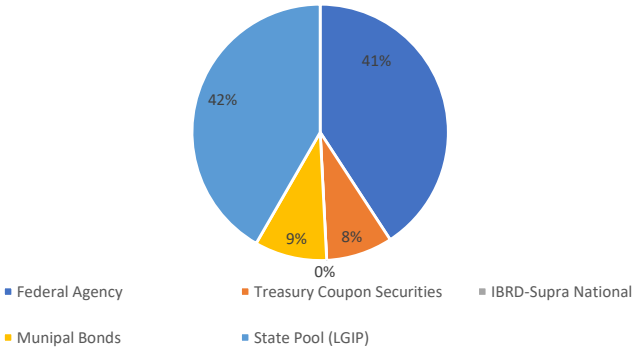
**Investment by Issuer**

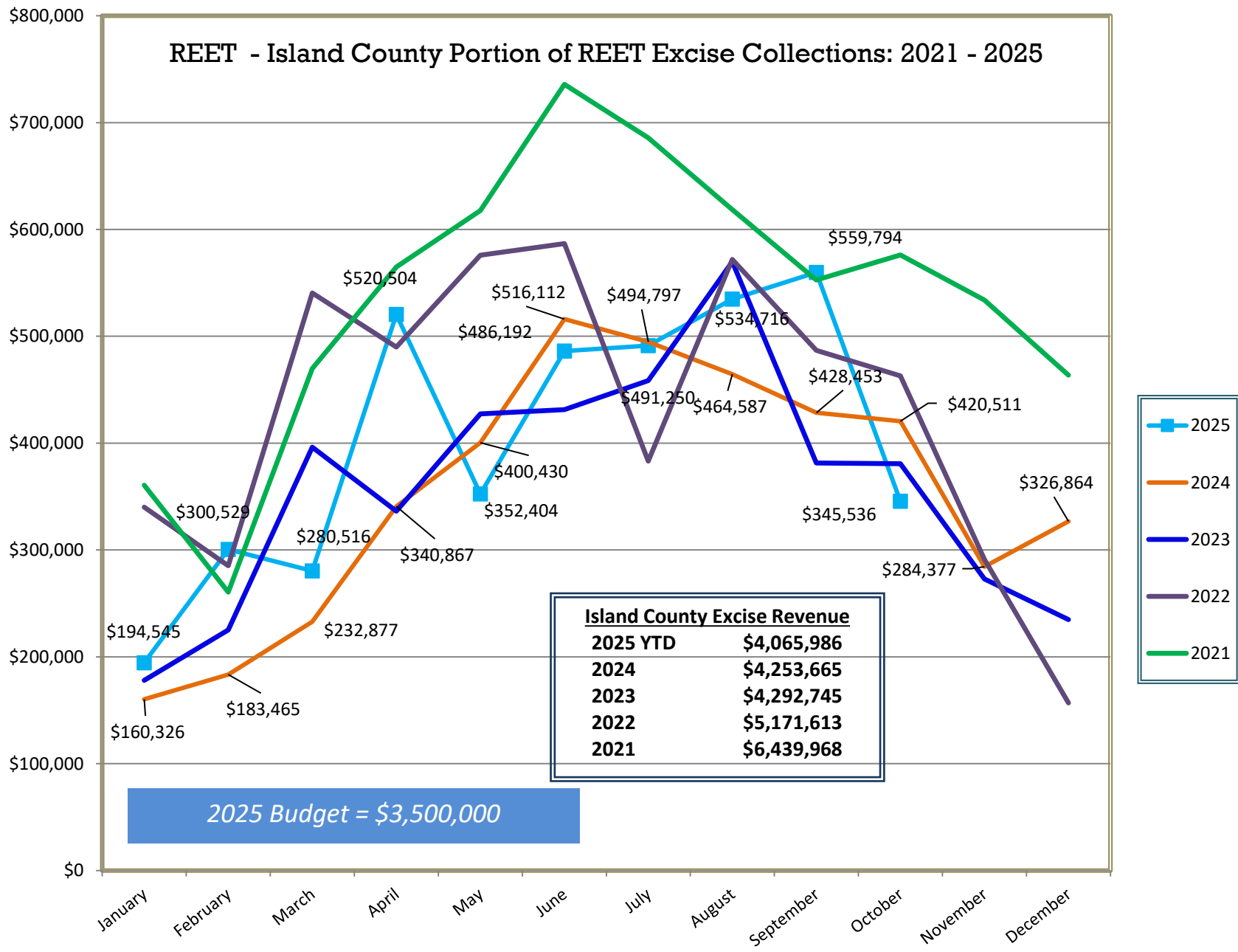
Issuer	%-tage	Par Value	Debt Policy	Variance
US Treasury Bills and Notes	8%	32,000,000.00	90%	82%
Fed Agri Mtg Corp	5%	18,000,000.00	40%	35%
Fed Farm Credit Bk	7%	27,000,000.00	40%	33%
Fed Home Loan Bk	24%	91,895,000.00	40%	16%
Fed Home Loan Mtg Corp	2%	9,000,000.00	40%	38%
Fed Nat'l Mtg Assn	3%	9,695,000.00	40%	37%
Municipal Bonds	9%	34,850,000.00	35%	26%
State Pool (LGIP)	42%	158,941,273.58	90%	48%
Supranationals	0%	-	5%	5%
	100%	381,381,273.58		

**INVESTMENT BY DEALER**

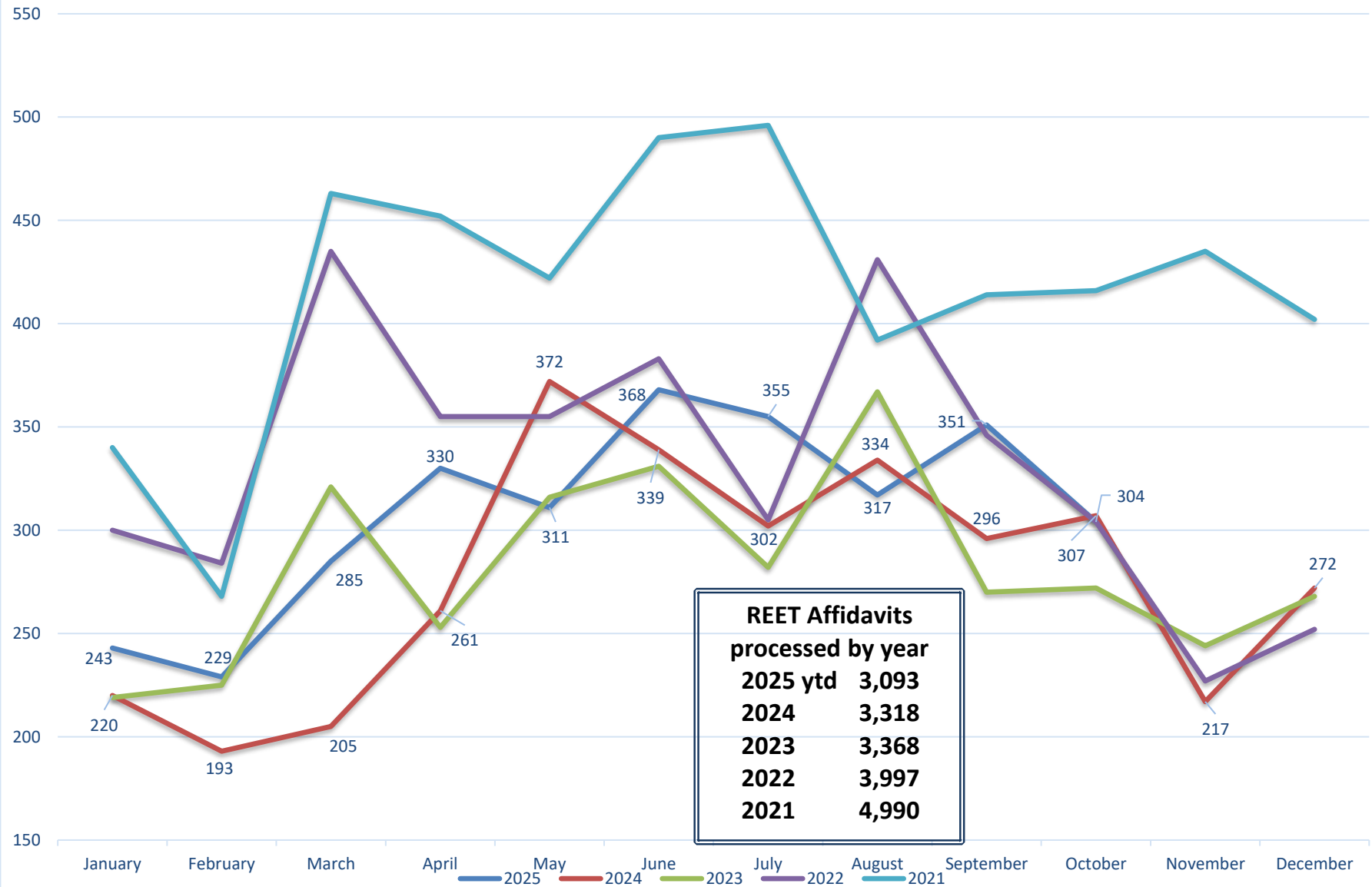


**Investment by Type**





## Island County 2021-25 REET - Number of Affidavits Processed by Month



YTD Island County Excise Revenue through October, by Year

