



Island County Public Health

Environmental Health – Food Safety Program
PO Box 5000 Coupeville, WA 98239-5000
(360) 678-8276 • Fax: (360) 679-7390
E-mail: foodsafety@islandcountywa.gov

5. Food Plans

Submission of the following plans* is required. (Preferred drawn to scale 1/4" to 1')

1. Floor Plans - Location of all equipment (Refrigeration, Cooking, Food Preparation, Hoods, Sinks, Doors, Windows, Generators, etc.) with labels that correspond with submitted equipment list.
2. Plumbing Plans - Locations and sizing of all water and wastewater systems (Water heater, sinks, plumbing fixtures, etc.). Completed hot water sizing calculation sheet based on type of water heater used (Tank or Tankless).

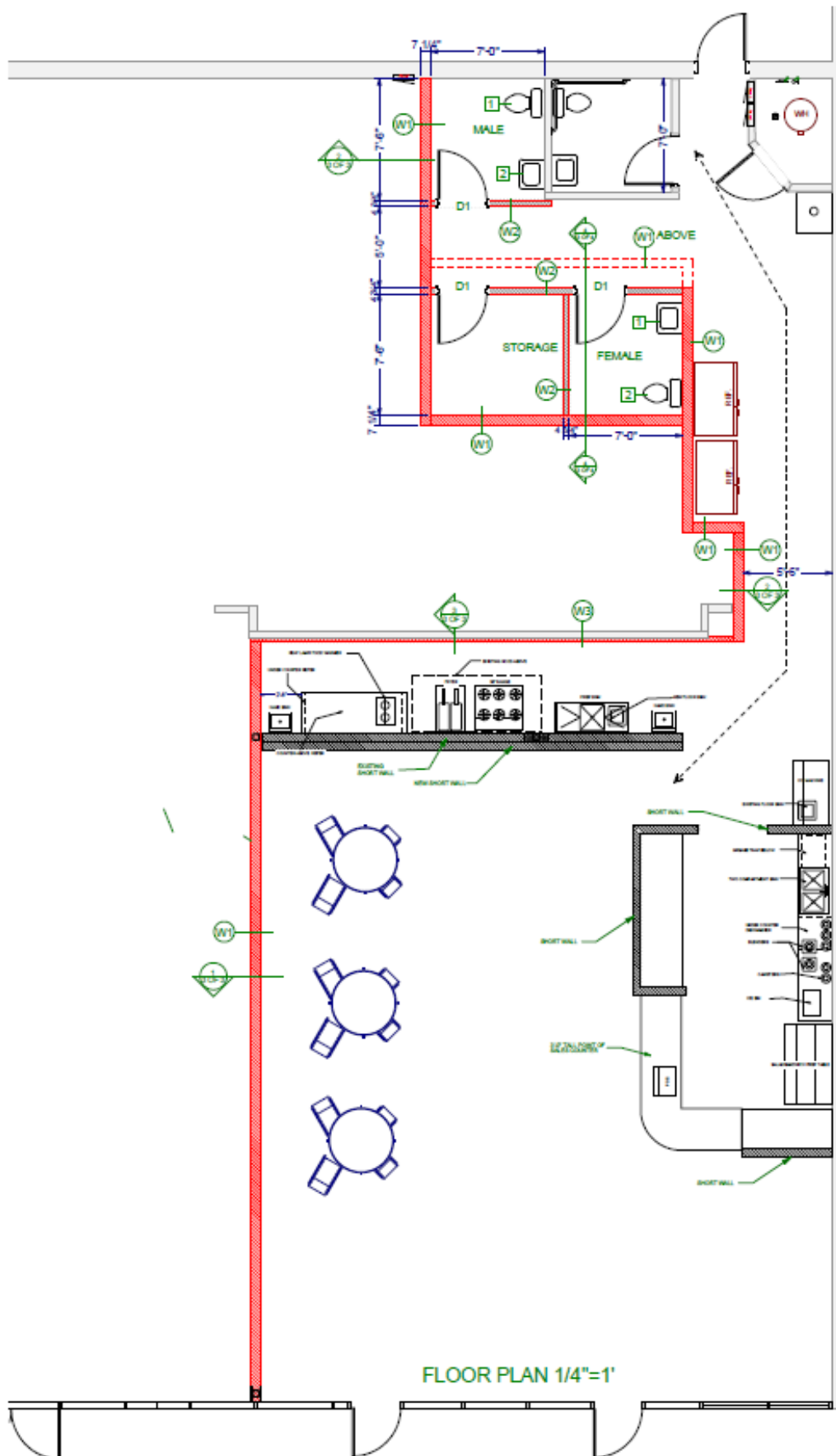
Submission of the following plans* is recommended.

1. Equipment Elevations - Side views showing all installed equipment.

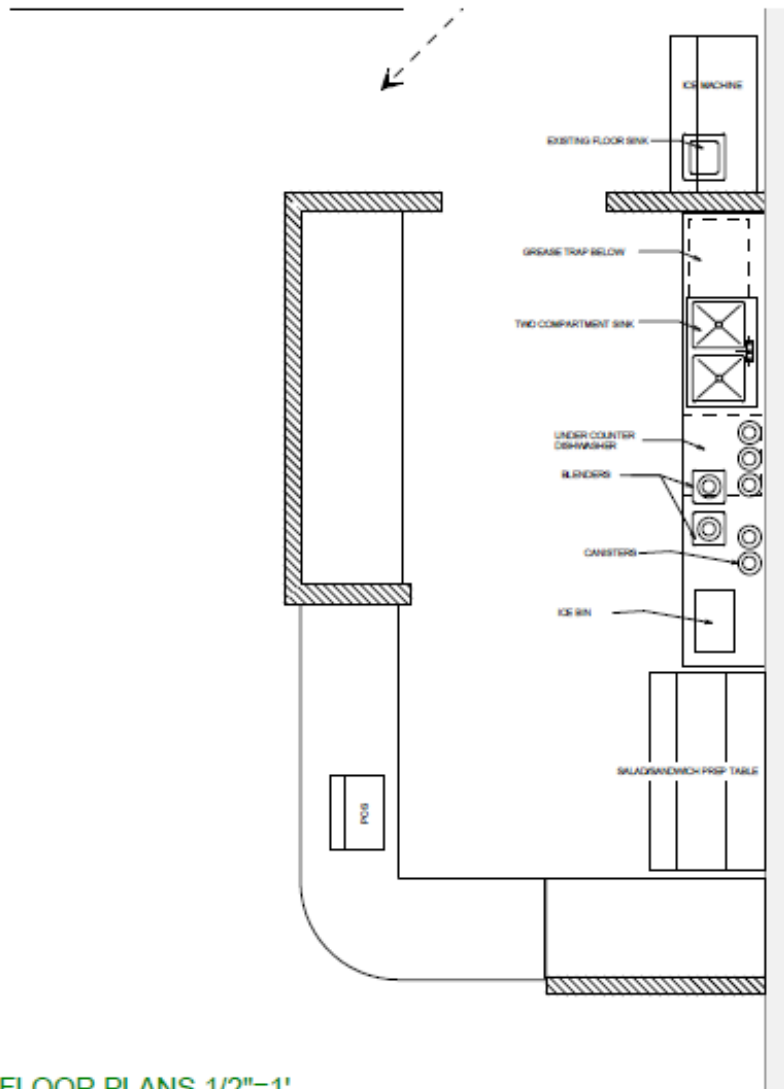
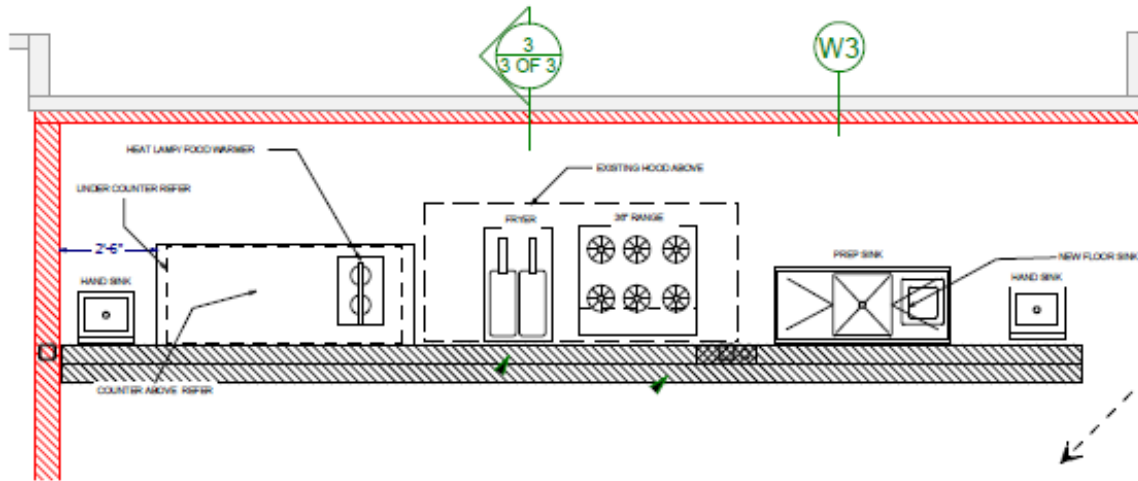
Plans preferred drawn to scale at 1/4" to 1'.

See plan examples included on pages 2 – 5.

Sample #1 - Floor Plan

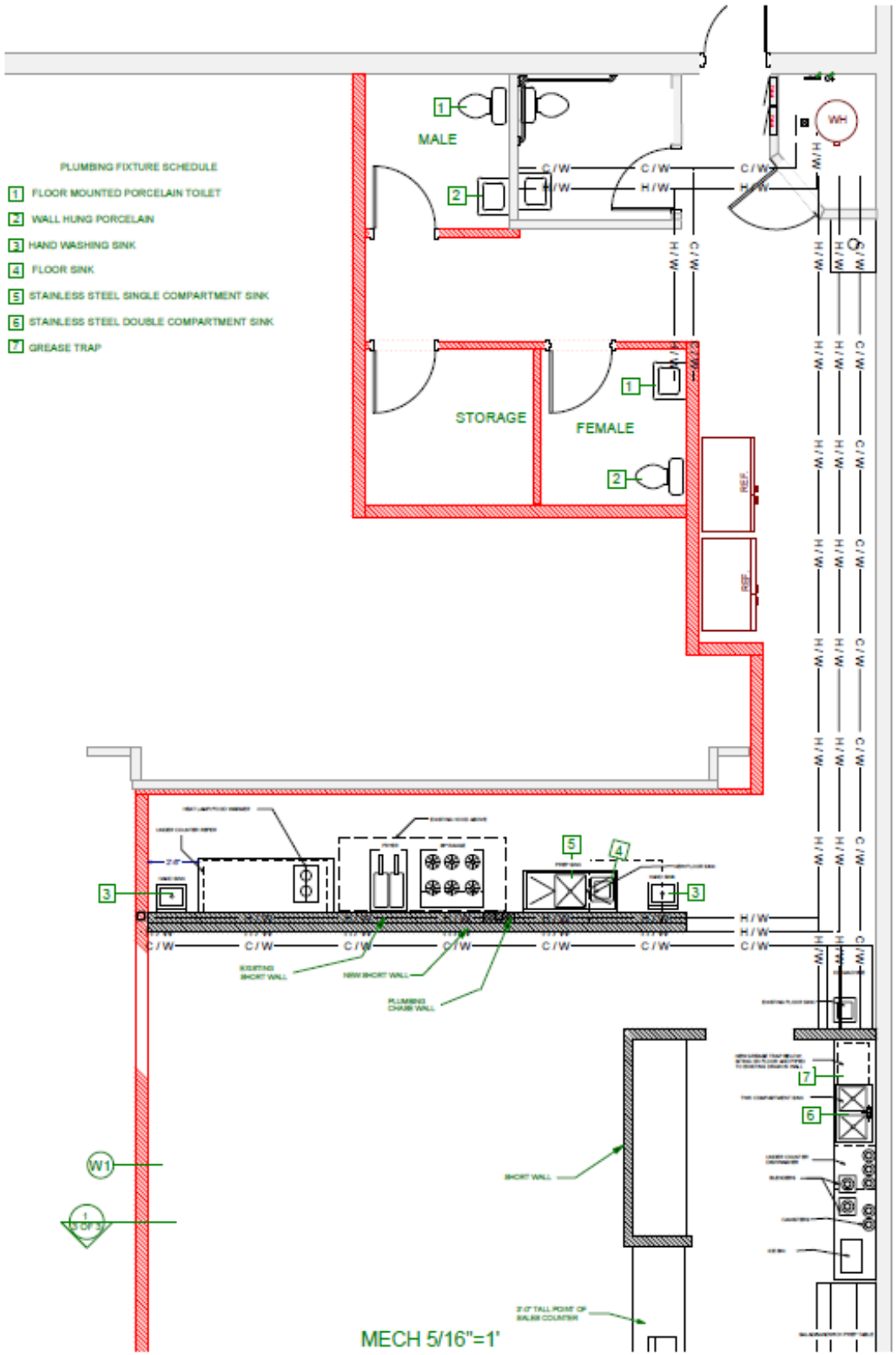


Sample # 2 - Enlarged Floor Plan

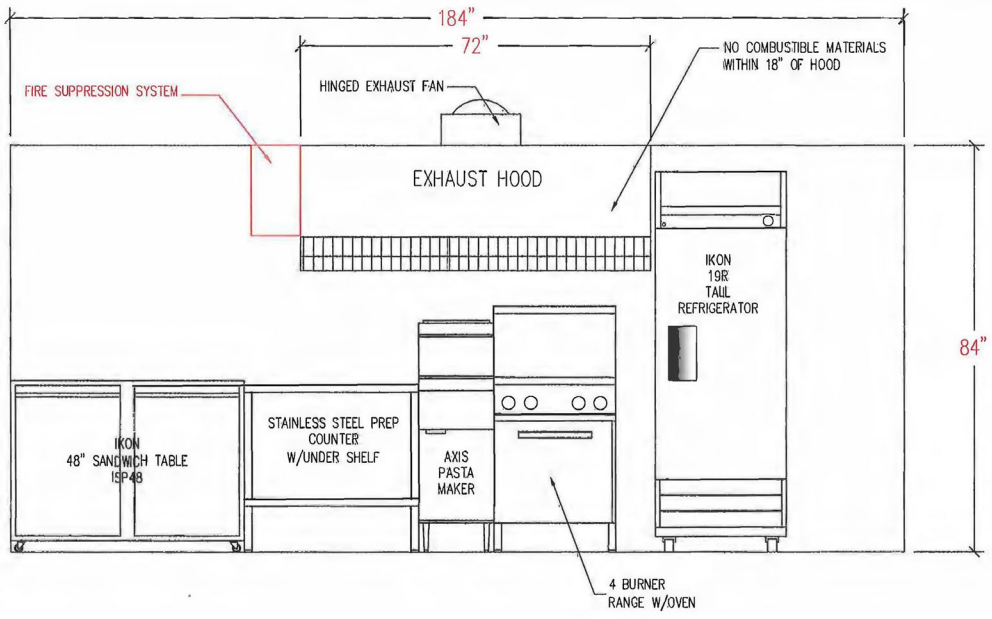


ENLARGED FLOOR PLANS 1/2"=1'

Sample # 3 - Plumbing Plan



Sample #4 - Equipment Elevation



ELEVATION	SHEET 1.3 OF 7 SHEETS
-----------	------------------------------------