

# **WASHINGTON STATE FERRIES**

## **Service Restoration Update**

John Vezina, Director Planning, Customer and  
Government Relations  
June 28, 2023  
Island County Council of Governments Meeting



# WSF SYSTEM

Largest ferry system in the United States



- 10 routes



- 20 terminals



- 21 vessels



- 1800 employees












- 8 counties in WA

- State's marine highway since 1951

# BY THE NUMBERS

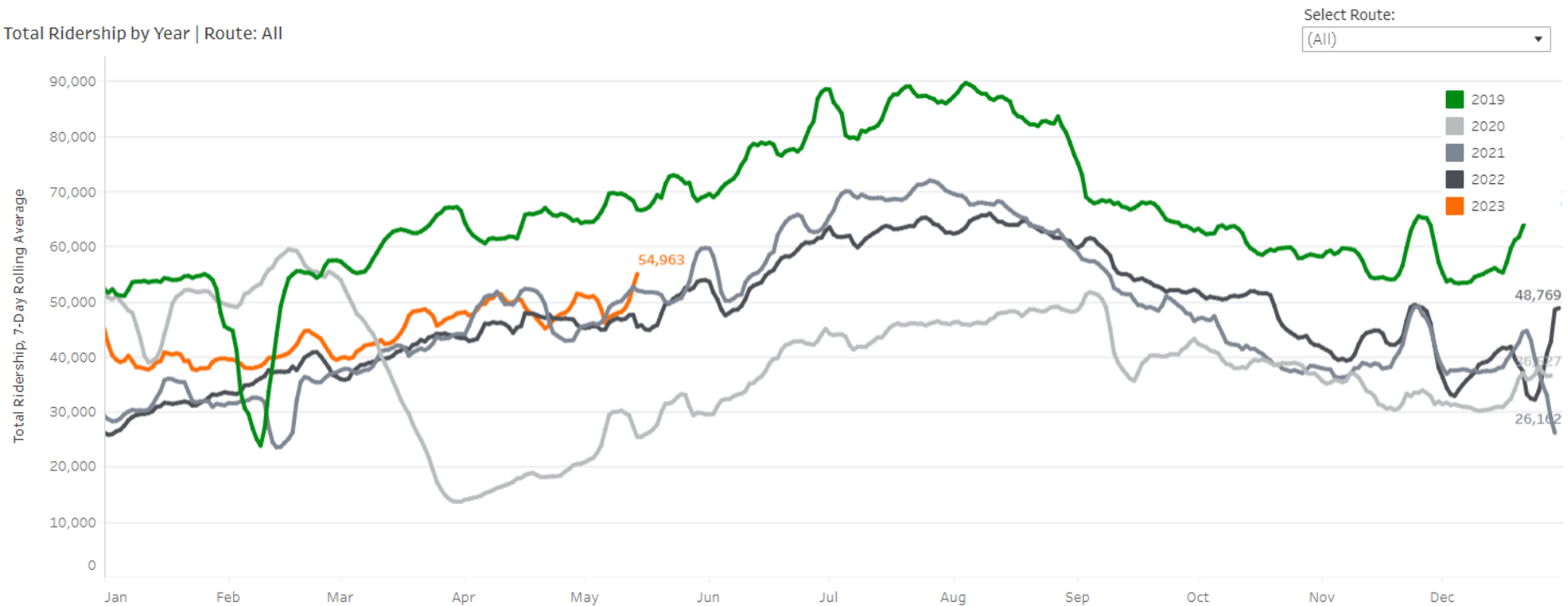
Highlights and accomplishments from Jan. 1  
– May 31, 2023

-  6,887,863 total riders
-  3,552,147 drivers (with vehicle)
-  3,335,716 vehicle passengers and walk-ons
-  58,273 trips completed
-  312,557 service miles
-  97.7% trip reliability
-  25 Lifesaving events
-  926 medical priority loads
-  191 Whale sightings reported



# RIDERSHIP

## Total 2023 systemwide ridership compared to previous years

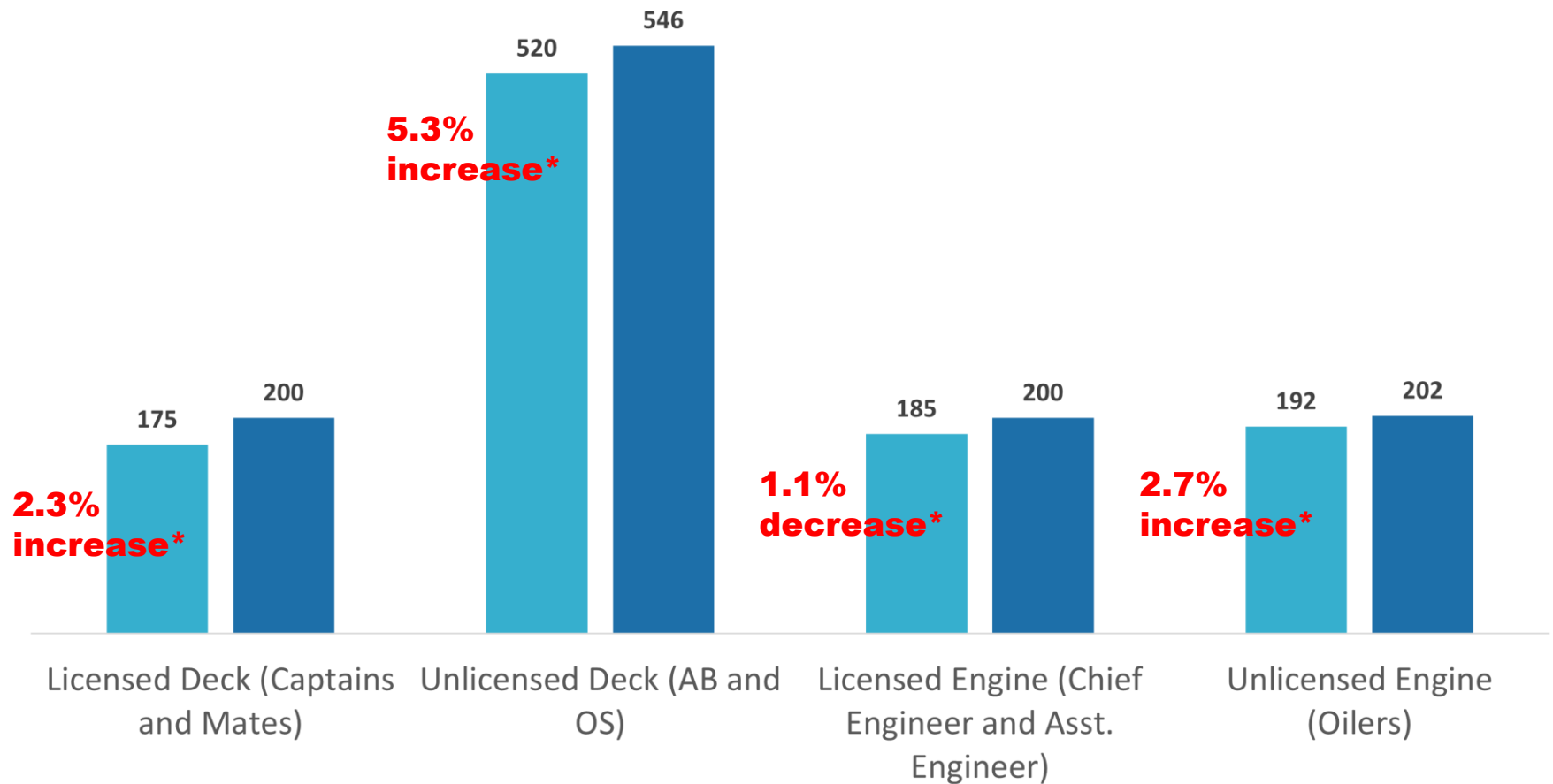


^ Note: This graph compares preliminary ridership data for 2023 to the same weekday in previous years, using the average of the last 7 days. Total ridership is estimated based on fares collected. Hover over the lines to see total riders, vehicles, and walk-on counts for each day.

# CREW AVAILABILITY

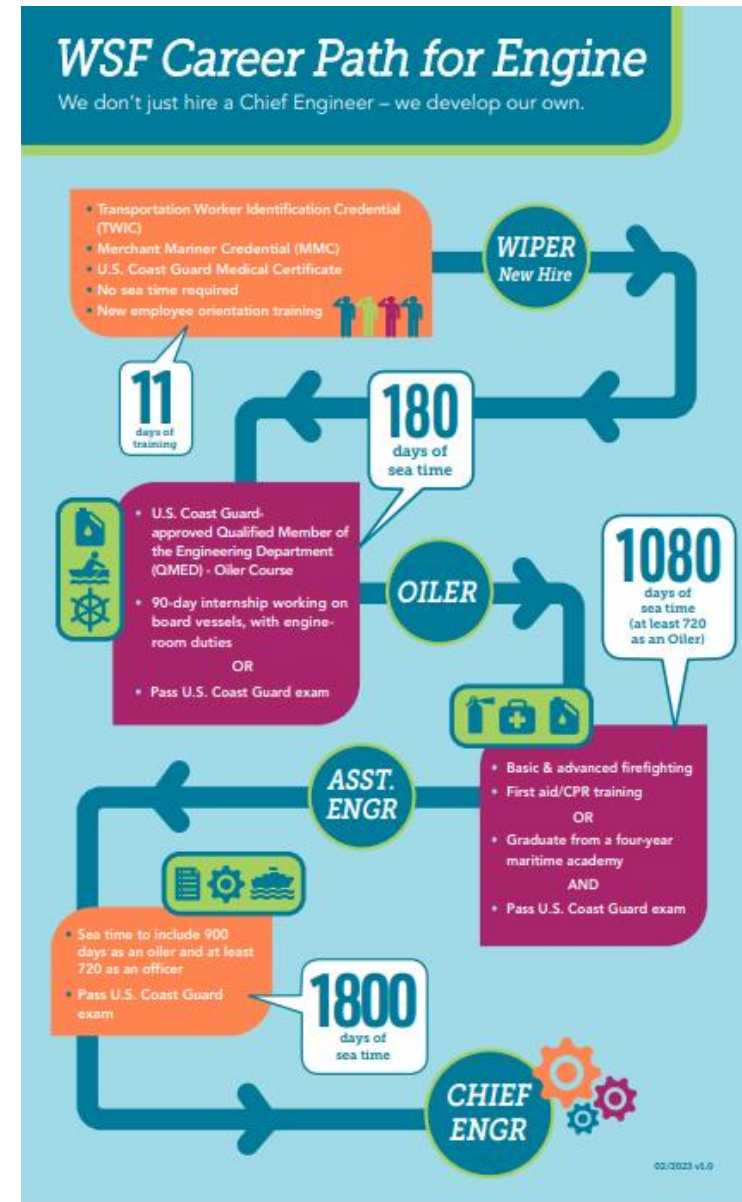
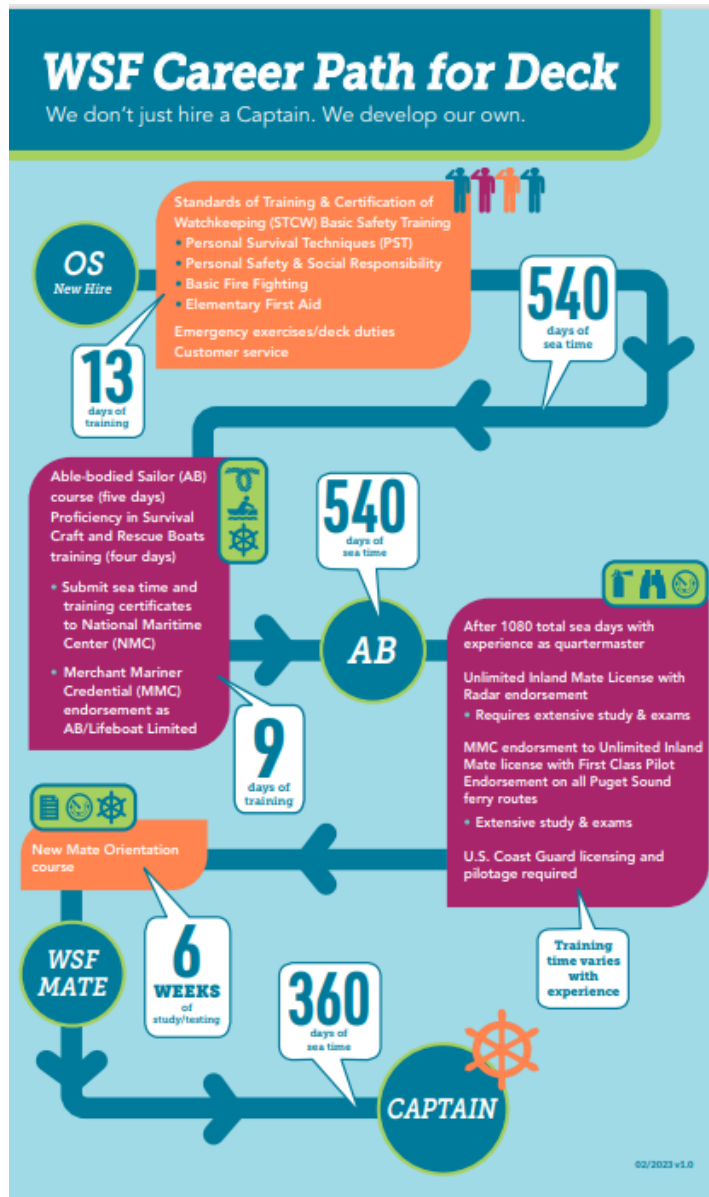
## Washington State Ferries: Staffing Needs

■ Current Staffing Levels (as of 4/30/23) ■ Target Staffing Levels



\* Percent change since January 2023

# CAREER PATH – WE DEVELOP OUR OWN





# WE'RE HIRING!

<http://wsdotjobs.com/ferries>



## COME SAIL WITH US!

Washington State Ferries is hiring.

Offering competitive wages, benefits,  
and career growth.



Apply now at  
[WSDOTjobs.com/ferries](http://WSDOTjobs.com/ferries)



## COME SAIL WITH US



Washington State  
Ferries is hiring.

## COME SAIL WITH US!



Washington State Ferries  
is hiring.

[WSDOTjobs.com/ferries](http://WSDOTjobs.com/ferries)



# VESSEL AVAILABILITY

YAKIMA



TILLIKUM



KALEETAN



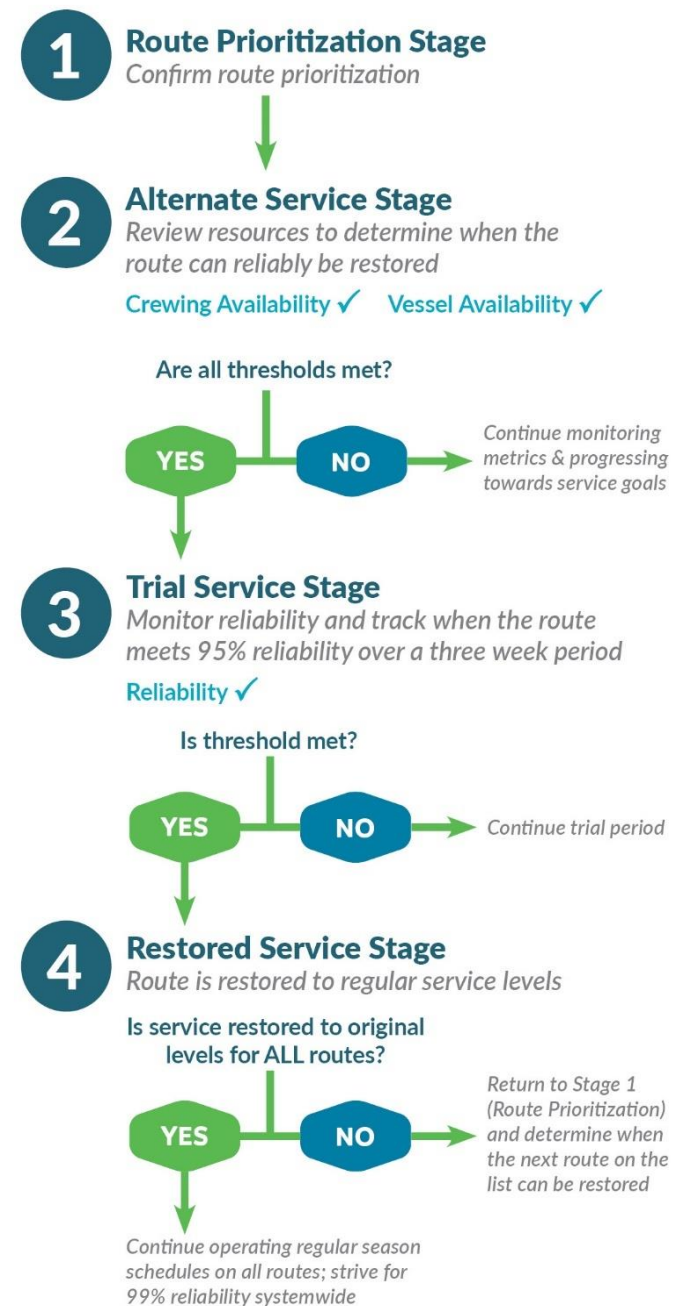


# SERVICE RESTORATION PROCESS

## Route prioritization

- Anacortes/San Juan Islands
- Seattle/Bainbridge
- Mukilteo/Clinton
- Edmonds/Kingston
- Fauntleroy/Vashon Island/Southworth
- Seattle/Bremerton
- Port Townsend/Coupeville
- Anacortes/Sidney BC

\* Point Defiance/Tahlequah remains on one-boat service



# SERVICE RESTORATION PROGRESS

Route	Restoration Stage
ANACORTES/ SAN JUAN ISLANDS	4 Regular Service
SEATTLE/ BAINBRIDGE	4 Regular Service
MUKILTEO/CLINTON	4 Regular Service
EDMONDS/KINGSTON	4 Regular Service
FAUNTLEROY/ VASHON/ SOUTHWORTH	2 Alternate Service
SEATTLE/ BREMERTON	2 Alternate Service
PORT TOWNSEND/ COUPEVILLE	2 Alternate Service
ANACORTES/ SIDNEY, B.C.	No Service
POINT DEFIANCE/ TAHLEQUAH	Regular Service

## Timeline for service restoration

### Anacortes/San Juan Islands

*Restored Jan. 2022*

### Seattle/Bainbridge

*Restored April 2022*

### Mukilteo/Clinton

*Restored May 2022*

### Edmonds/Kingston

*Restored Feb. 2023*

### Fauntleroy/Vashon/Southworth

*Estimated restoration: Early-2024*

### Seattle/Bremerton

*Estimated restoration: Early-2024*

### Port Townsend/Coupeville

*Estimated Restoration: Spring 2024*

### Anacortes/Sidney, B.C.

*Estimated restoration: 2030*

# QUESTIONS?

For additional information on  
Washington State Ferries,  
please contact:

John Vezina, Director of Planning,  
Customer and Government Relations

[VezinaJ@wsdot.wa.gov](mailto:VezinaJ@wsdot.wa.gov)

