

Storm Surge Today, MORAN BEACH



Notes

- The mapped "Current Shoreline" is the Mean Higher High Water datum, 1983-2001 epoch, as provided by the National Oceanic and Atmospheric Administration (NOAA).
- Maps use lidar-based elevation data from 2014 made available through the Puget Sound Lidar Consortium (PSLC). Accuracy of elevation data at individual sites has not been verified.
- Maps use only elevation data to map areas of inundation and do not model hydrology, subsurface flow pathways, or shoreline engineering.
- Maps do not reflect shoreline change or erosion.

Sea Level Rise Inundation Areas in 2030, MORAN BEACH

Probabilistic Projections of Changes to Average Daily High Tide Inundation Due to Sea Level Rise



Notes

- Sea-level rise projections based on Kopp et al., 2014 (Probabilistic 21st and 22nd century sea-level projections at a global network of tide gauge sites) for RCP 8.5, and adjusted for vertical land movement.
- The mapped "Current Shoreline" is the Mean Higher High Water datum, 1983-2001 epoch, as provided by the National Oceanic and Atmospheric Administration (NOAA).
- Maps use lidar-based elevation data from 2014 made available through the Puget Sound Lidar Consortium (PSLC). Accuracy of elevation data at individual sites has not been verified.
- Maps use only elevation data to map areas of inundation and do not model hydrology, subsurface flow pathways, or shoreline engineering.
- Maps do not reflect shoreline change or erosion.

Annual Extreme Storm Flooded Areas in 2030 with Sea Level Rise, MORAN BEACH

Combined Probabilistic Sea Level Rise Projections and Annual Extreme Coastal Flooding Probabilities



- Notes**
- Sea-level rise projections based on Kopp et al., 2014 (Probabilistic 21st and 22nd century sea-level projections at a global network of tide gauge sites) for RCP 8.5, and adjusted for vertical land movement.
 - The mapped "Current Shoreline" is the Mean Higher High Water datum, 1983-2001 epoch, as provided by the National Oceanic and Atmospheric Administration (NOAA).
 - Maps use lidar-based elevation data from 2014 made available through the Puget Sound Lidar Consortium (PSLC). Accuracy of elevation data at individual sites has not been verified.
 - Maps use only elevation data to map areas of inundation and do not model hydrology, subsurface flow pathways, or shoreline engineering.
 - Maps do not reflect shoreline change or erosion.
 - Maps do not reflect the additional flood risk associated with waves in elevating water level during storms (applies to the *Annual Extreme Storm Flooded Areas with Sea Level Rise* map only).
 - Annual extreme flooding probabilities derived from historical data collected at nearby NOAA tide stations and do not take into account possible climate-related changes to storminess patterns.

Produced for:



Department of
Natural Resources

Produced by:



adaptation
international



Funding Provided by:



WASHINGTON STATE
RECREATION AND CONSERVATION OFFICE
Salmon Recovery
Funding Board



Sea Level Rise Inundation Areas in 2050, MORAN BEACH

Probabilistic Projections of Changes to Average Daily High Tide Inundation Due to Sea Level Rise



Notes

- Sea-level rise projections based on Kopp et al., 2014 (Probabilistic 21st and 22nd century sea-level projections at a global network of tide gauge sites) for RCP 8.5, and adjusted for vertical land movement.
- The mapped "Current Shoreline" is the Mean Higher High Water datum, 1983-2001 epoch, as provided by the National Oceanic and Atmospheric Administration (NOAA).
- Maps use lidar-based elevation data from 2014 made available through the Puget Sound Lidar Consortium (PSLC). Accuracy of elevation data at individual sites has not been verified.
- Maps use only elevation data to map areas of inundation and do not model hydrology, subsurface flow pathways, or shoreline engineering.
- Maps do not reflect shoreline change or erosion.

Annual Extreme Storm Flooded Areas in 2050 with Sea Level Rise, MORAN BEACH

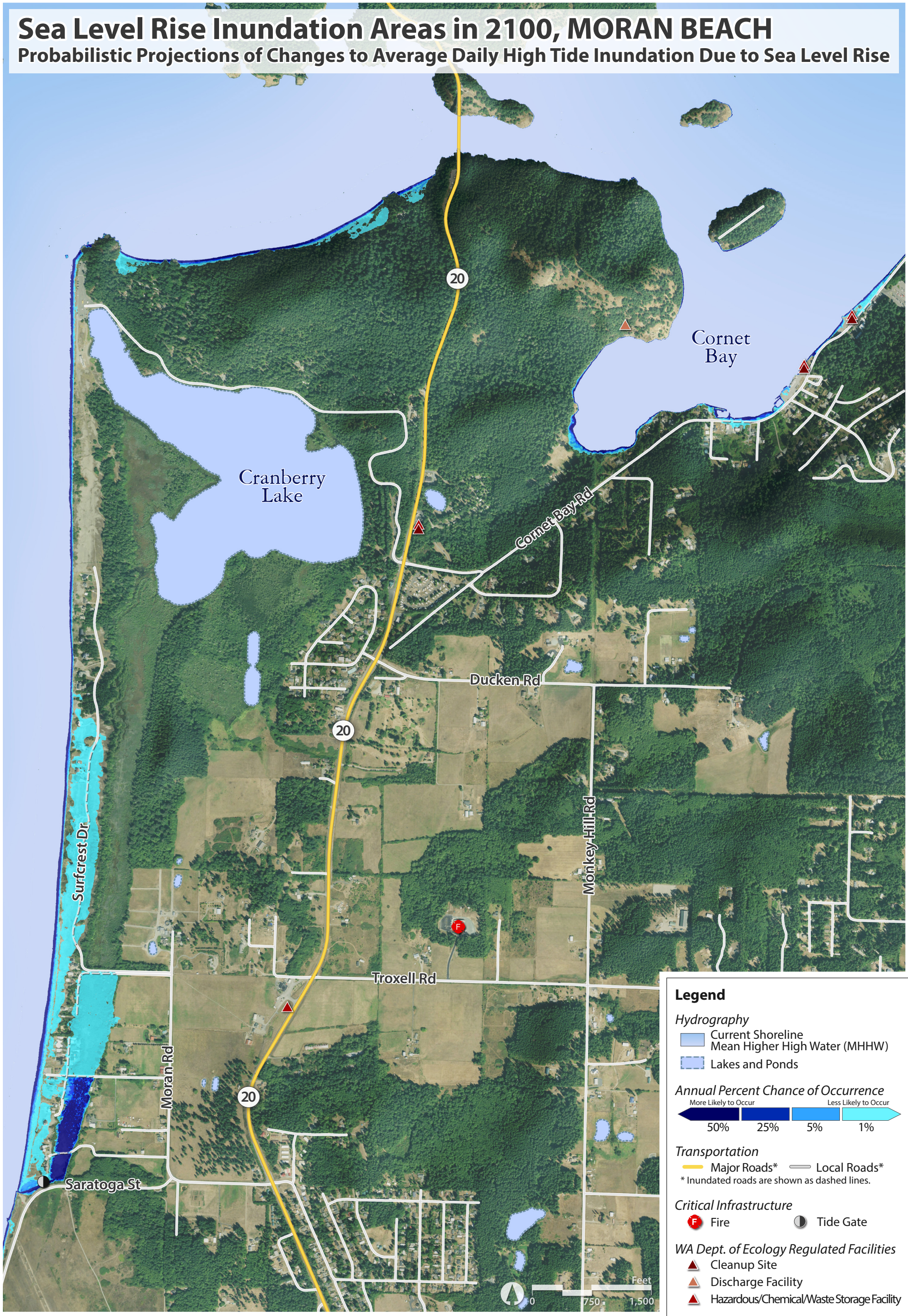
Combined Probabilistic Sea Level Rise Projections and Annual Extreme Coastal Flooding Probabilities



- Notes**
- Sea-level rise projections based on Kopp et al., 2014 (Probabilistic 21st and 22nd century sea-level projections at a global network of tide gauge sites) for RCP 8.5, and adjusted for vertical land movement.
 - The mapped "Current Shoreline" is the Mean Higher High Water datum, 1983-2001 epoch, as provided by the National Oceanic and Atmospheric Administration (NOAA).
 - Maps use lidar-based elevation data from 2014 made available through the Puget Sound Lidar Consortium (PSLC). Accuracy of elevation data at individual sites has not been verified.
 - Maps use only elevation data to map areas of inundation and do not model hydrology, subsurface flow pathways, or shoreline engineering.
 - Maps do not reflect shoreline change or erosion.
 - Maps do not reflect the additional flood risk associated with waves in elevating water level during storms (applies to the *Annual Extreme Storm Flooded Areas with Sea Level Rise* map only).
 - Annual extreme flooding probabilities derived from historical data collected at nearby NOAA tide stations and do not take into account possible climate-related changes to storminess patterns.

Sea Level Rise Inundation Areas in 2100, MORAN BEACH

Probabilistic Projections of Changes to Average Daily High Tide Inundation Due to Sea Level Rise

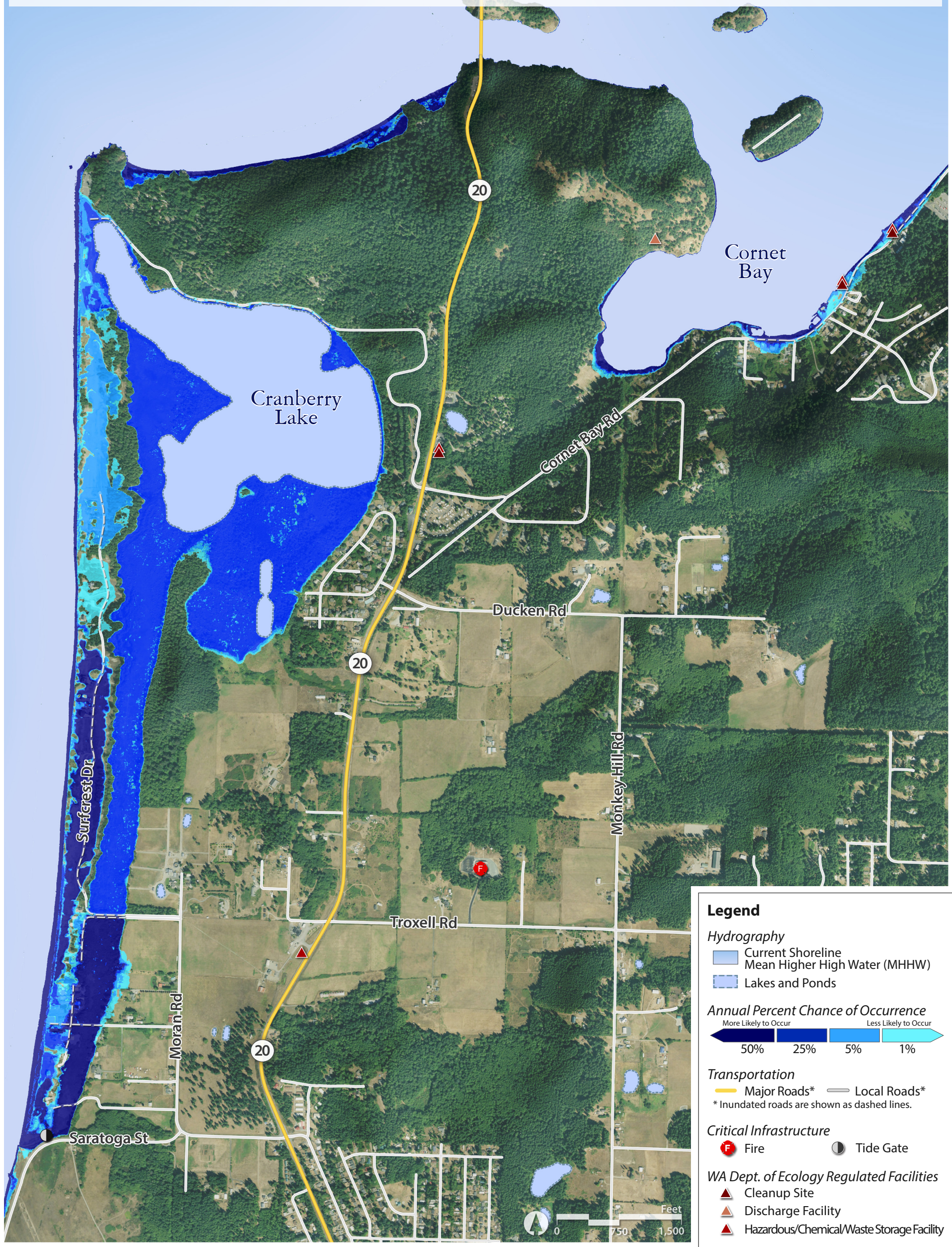


Notes

- Sea-level rise projections based on Kopp et al., 2014 (Probabilistic 21st and 22nd century sea-level projections at a global network of tide gauge sites) for RCP 8.5, and adjusted for vertical land movement.
- The mapped "Current Shoreline" is the Mean Higher High Water datum, 1983-2001 epoch, as provided by the National Oceanic and Atmospheric Administration (NOAA).
- Maps use lidar-based elevation data from 2014 made available through the Puget Sound Lidar Consortium (PSLC). Accuracy of elevation data at individual sites has not been verified.
- Maps use only elevation data to map areas of inundation and do not model hydrology, subsurface flow pathways, or shoreline engineering.
- Maps do not reflect shoreline change or erosion.

Annual Extreme Storm Flooded Areas in 2100 with Sea Level Rise, MORAN BEACH

Combined Probabilistic Sea Level Rise Projections and Annual Extreme Coastal Flooding Probabilities



- Notes**
- Sea-level rise projections based on Kopp et al., 2014 (Probabilistic 21st and 22nd century sea-level projections at a global network of tide gauge sites) for RCP 8.5, and adjusted for vertical land movement.
 - The mapped "Current Shoreline" is the Mean Higher High Water datum, 1983-2001 epoch, as provided by the National Oceanic and Atmospheric Administration (NOAA).
 - Maps use lidar-based elevation data from 2014 made available through the Puget Sound Lidar Consortium (PSLC). Accuracy of elevation data at individual sites has not been verified.
 - Maps use only elevation data to map areas of inundation and do not model hydrology, subsurface flow pathways, or shoreline engineering.
 - Maps do not reflect shoreline change or erosion.
 - Maps do not reflect the additional flood risk associated with waves in elevating water level during storms (applies to the *Annual Extreme Storm Flooded Areas with Sea Level Rise* map only).
 - Annual extreme flooding probabilities derived from historical data collected at nearby NOAA tide stations and do not take into account possible climate-related changes to storminess patterns.

Produced for:



Produced by:



Funding Provided by:

