



Discussion Based Exercise

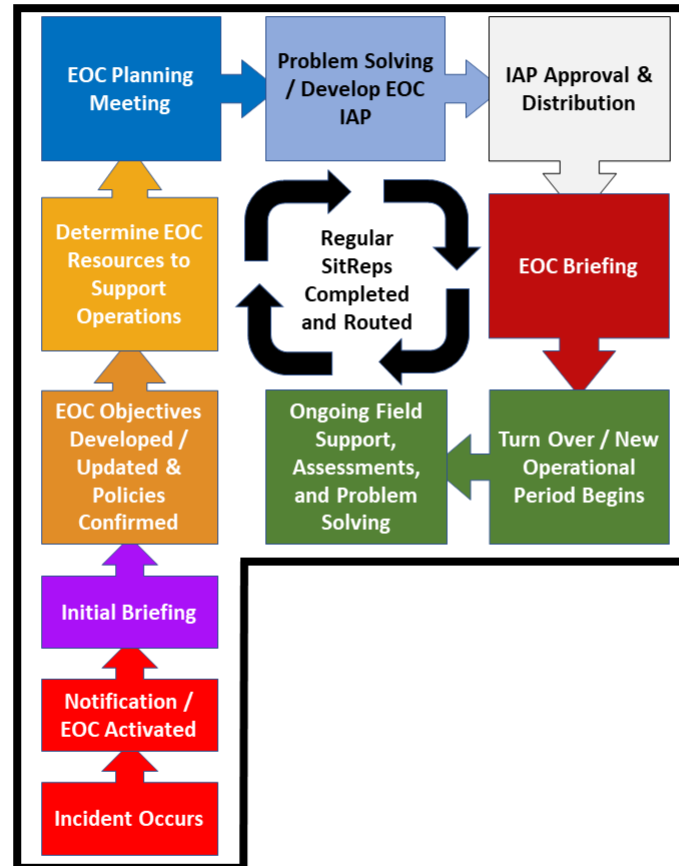
The First Moments

Eric Brooks, Director

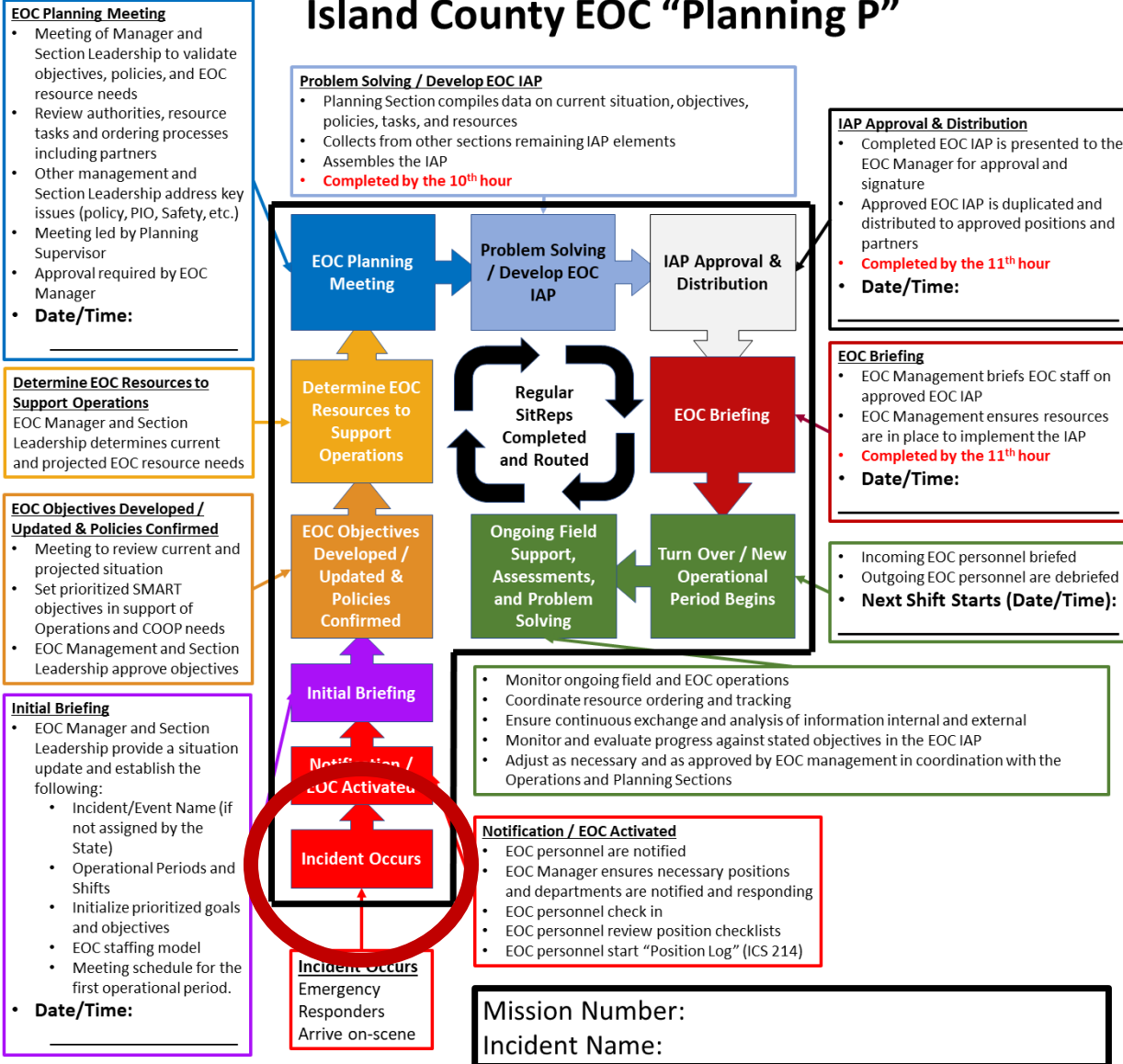
Island County Emergency Management

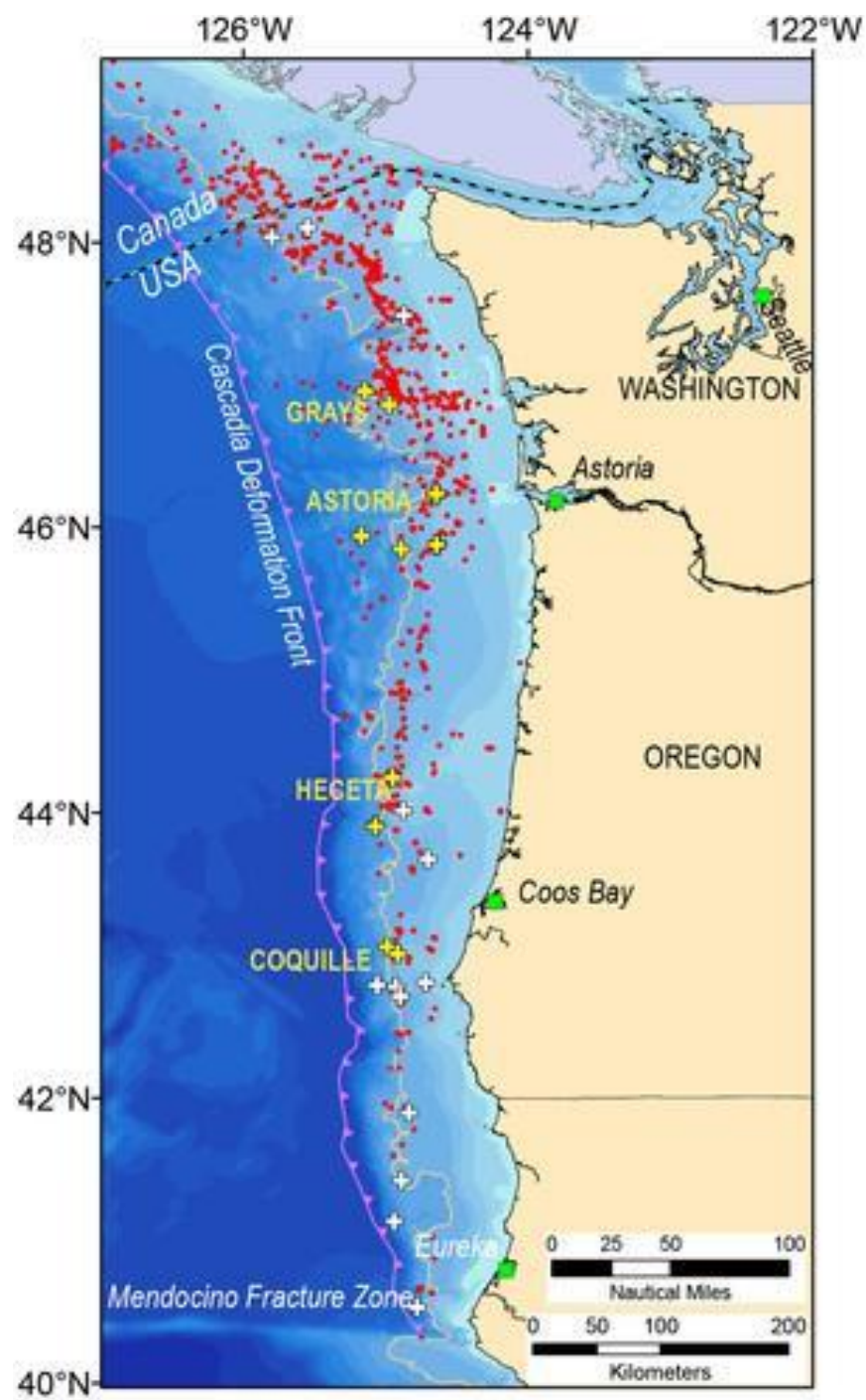


Island County EOC “Planning P”



Island County EOC "Planning P"





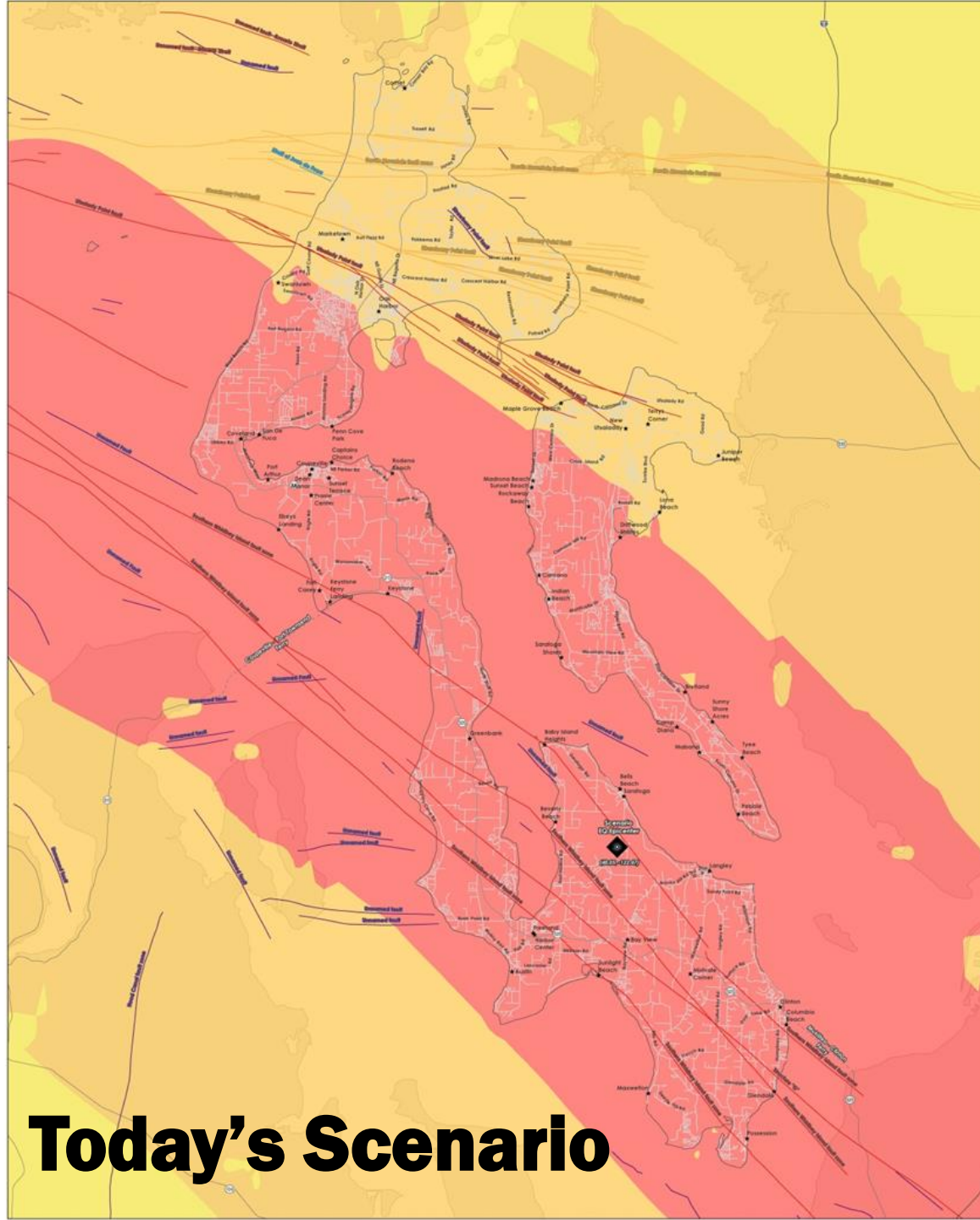
Intensity	Shaking	Description/Damage
I	Not felt	Not felt except by a very few under especially favorable conditions.
II	Weak	Felt only by a few persons at rest, especially on upper floors of buildings.
III	Weak	Felt quite noticeably by persons indoors, especially on upper floors of buildings. Many people do not recognize it as an earthquake. Standing motor cars may rock slightly. Vibrations similar to the passing of a truck. Duration estimated.
IV	Light	Felt indoors by many, outdoors by few during the day. At night, some awakened. Dishes, windows, doors disturbed; walls make cracking sound. Sensation like heavy truck striking building. Standing motor cars rocked noticeably.
V	Moderate	Felt by nearly everyone; many awakened. Some dishes, windows broken. Unstable objects overturned. Pendulum clocks may stop.
VI	Strong	Felt by all, many frightened. Some heavy furniture moved; a few instances of fallen plaster. Damage slight.
VII	Very strong	Damage negligible in buildings of good design and construction; slight to moderate in well-built ordinary structures; considerable damage in poorly built or badly designed structures; some chimneys broken.
VIII	Severe	Damage slight in specially designed structures; considerable damage in ordinary substantial buildings with partial collapse. Damage great in poorly built structures. Fall of chimneys, factory stacks, columns, monuments, walls. Heavy furniture overturned.
IX	Violent	Damage considerable in specially designed structures; well-designed frame structures thrown out of plumb. Damage great in substantial buildings, with partial collapse. Buildings shifted off foundations.
X	Extreme	Some well-built wooden structures destroyed; most masonry and frame structures destroyed with foundations. Rails bent.

4. Shopping centres are consolidated and more open space is created



Diagram illustrating the impact of transport interventions on the urban environment.





Today's Scenario

It's 3:30PM and the ground shakes

What are our Goals and Priorities?



Communications



How will we communicate with employees?

Facilities

How will we assess County buildings?



It's 3:30AM and the ground shakes

What has changed?



What will the initial message to the community be?

How will we distribute the messaging?



Other items to discuss now or in further discussions?





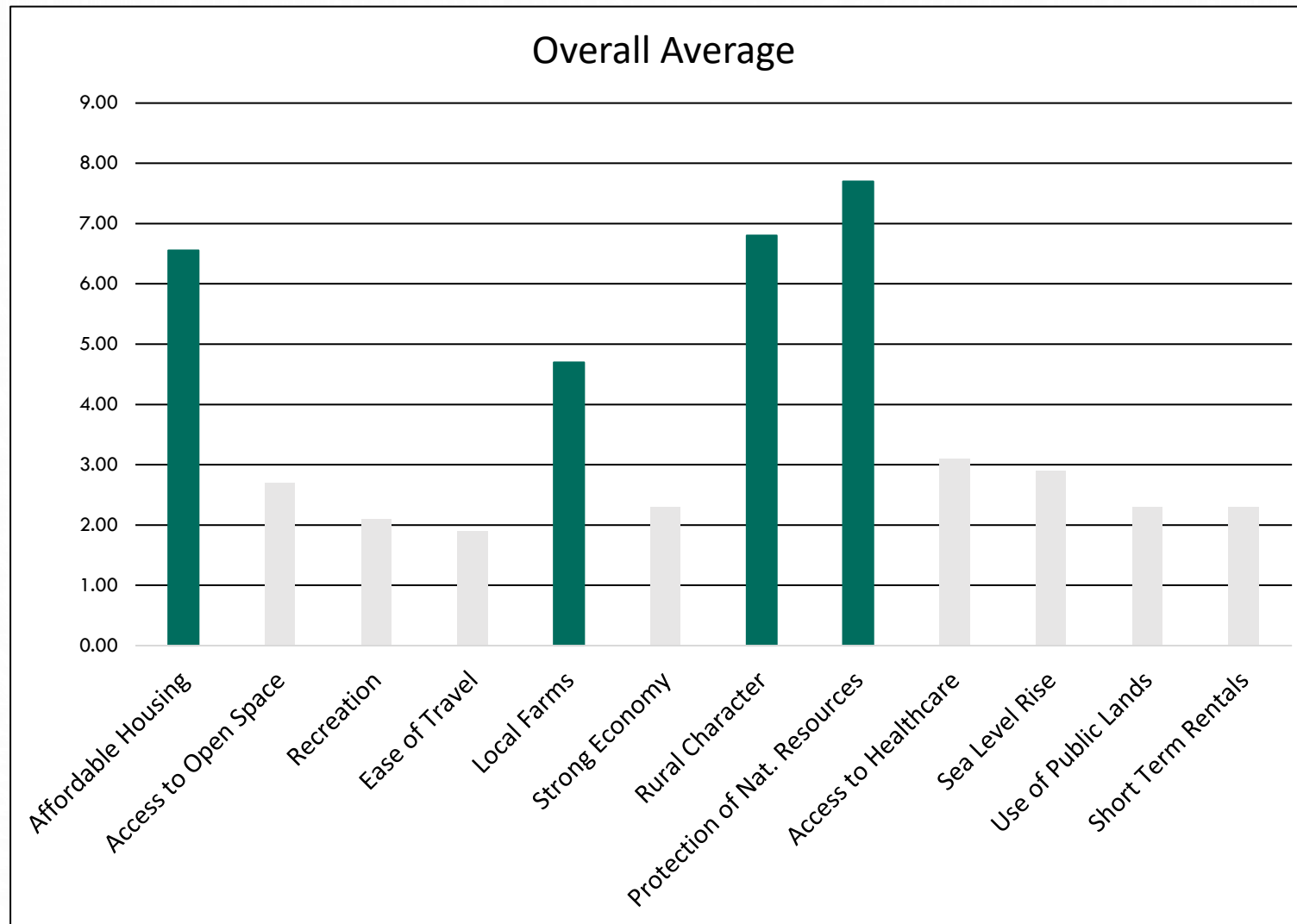
2025 COMPREHENSIVE PLAN PERIODIC UPDATE



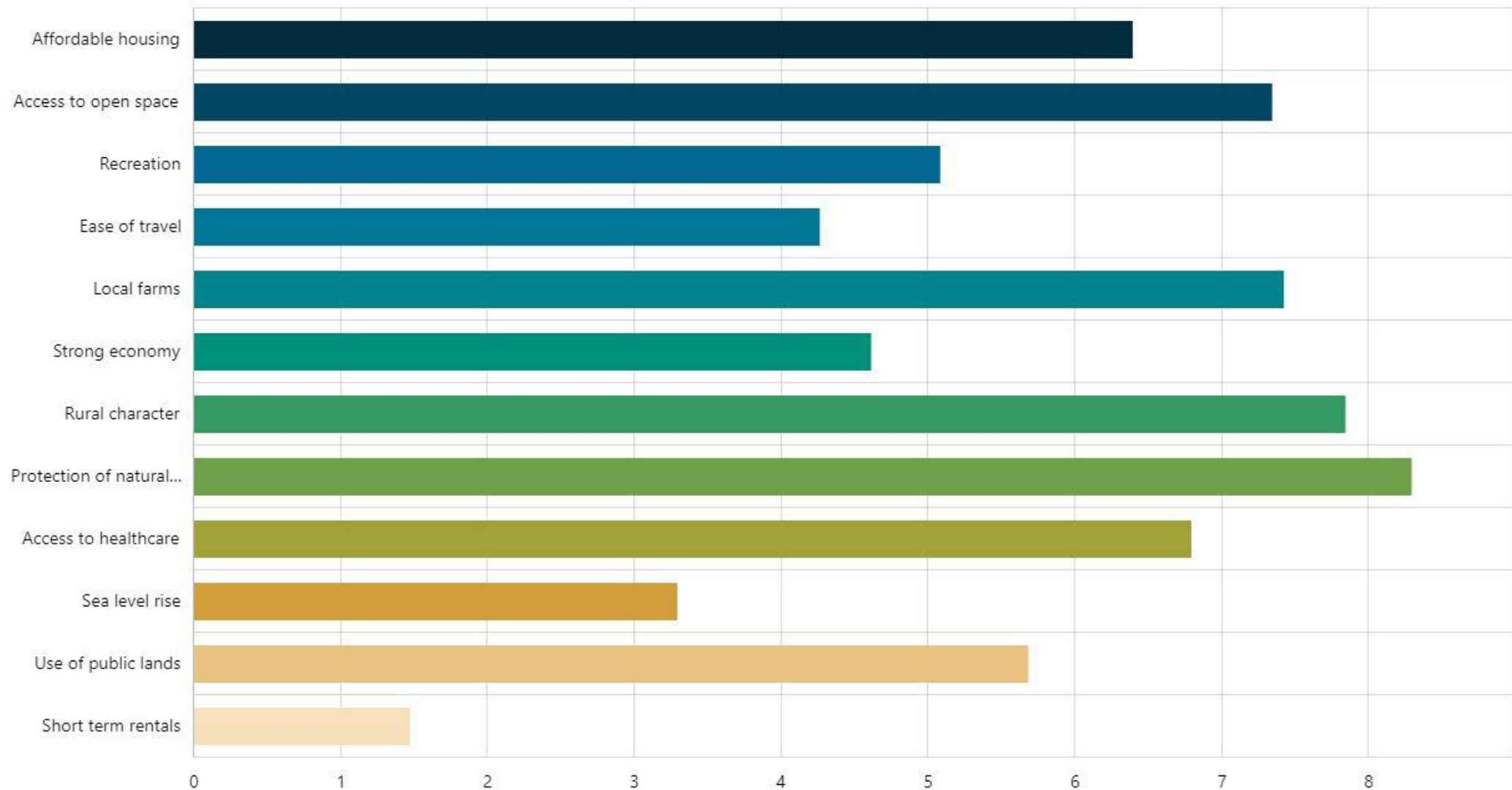
VALUE STATEMENTS

February 14, 2024

Priorities Ranked by participants at open houses (149)



Priorities Ranked by online participants (38)



Background Value Statements

During the recent open houses, and online, we asked the public to contribute Value Statements to be considered when updating the Introduction Chapter of the Comp Plan.

“I value _____ because _____.”



Selected Statements from Camano

- “I value protection of the natural elements of an island because there is only so much pressure the limited resources an island can take.”
- “I value the opportunity to recreate in undisturbed natural environments (hiking, kayaking, biking, photography, botany, birding).”
- “I value quiet from gunfire and fireworks.”
- “I value bike lanes/paths because it allows residents and visitors access to the Islands’ many assets.”



Selected Statements from So. Whidbey

- “The vast amount of undeveloped rural land and our parks.”
- “Rural character and access to public land.”
- “I value the cultural landscape and especially the historic structures.”
- “Our agricultural community – they contribute more to community and economy than they get credit for.”
- “I value the forests, shorelines, and prairies because that is how I retain my mental health.”



Selected Statements from Central Whidbey

- “Rural character and valuing of all citizens regardless of income because sense of community.”
- “There is an integral interaction between climate and many elements of the comp plan. Climate refugees will impact housing, warming will increase frequency of algae blooms in lakes and influence healthy, etc. Climate should be considered in all elements.”
- “I value natural beauty and the retention of rural areas because it is why I moved here.”



Selected Statements from No. Whidbey

- “I value the Parks because it promotes people being outdoors.”
- “I value open space that preserves vistas, allows us to recreate, and connect to surrounding environment.”
- “I value agriculture and the rural environment because it grounds us to healthier communities.”
- “I value the natural resources and culture rich environment because we live in a unique and diverse location that needs to be preserved and cherished.”



Selected Statements from Online Surveys

- “I value the idea of a Bridge to Boat trail because I would love to hop on my bike and go from end to end on Whidbey to enjoy our island that way.”
- “I value open spaces for the enjoyment and sustainability of the natural world as well as community spaces for people to come together and support and enjoy one another.”
- “I value the balance of business needs and their immediate neighbors with the greater community need for viable resources and opportunities in order for a wide range of ages and wealth levels to call Whidbey home.”
- “I value access to the shoreline because I appreciate the richness of the marine environment surrounding our Islands.”



Selected Statements from Online Surveys Cont.

- “I value an emphasis on preserving our natural habitats and water aquifer because people are only a small part of our world.”
- “I value the environment because it allows me to connect with nature, to enjoy outdoor activities.”
- “Proximity to nature because it adds immense value to my day-to-day wellbeing and that of my young family.”
- “I value the limited growth because it allows for the natural beauty to be preserved.”



Board Input

- Draft Values Statements for the Introduction Chapter.
- At least one statement should reflect each of the Board's priorities of Health, Equity, and Climate Resilience.
- Consider community input/priorities in the statements.



QUESTIONS?



Reminder

- Land Use element Goals & Policies scheduled for work session on March 6.

