



**ISLAND COUNTY PUBLIC HEALTH
DIVISION OF NATURAL RESOURCES
SURFACE WATER QUALITY
MONITORING PROGRAM**

Prepared By :

Carlie Miller, Water Quality Specialist
Sage Ince, Water Quality Specialist
Jessica Reed, Watershed Planner



WY23

SURFACE WATER QUALITY

REPORT

SUMMARY

This report covers data and results from October 2022 to September 2023, referred to as Water Year 2023 or WY23.



TABLE OF CONTENT

1

PROGRAM OVERVIEW

2

WY23 HIGHLIGHTS

3

STREAM HEALTH

4

WRAP-UP

SURFACE WATER QUALITY MONITORING PROGRAM



GOAL:

Protect critical areas, public health, and surface waters

VISION:

For Island County to have safe shellfish harvesting beds, healthy salmon habitat, and safeguarded public health

WY23 PROGRAM HIGHLIGHTS

**37/
200** WATERSHEDS MONITORED
BETWEEN BOTH ISLANDS

UP 150% FROM PREVIOUS WATER YEAR!



**4,000+ STAFF
HOURS**



**COLLECTING
SAMPLES AND
ANALYZING
DATA**

**450+ WATER
SAMPLES
ANALYZED**



**50 SOURCE ID
SAMPLES**



OVER 10 SOURCE ID INVESTIGATIONS

REPORTED TO THE ADAPTIVE MANAGEMENT
ACTION TEAM



ISLAND COUNTY IS WATER RESOURCE INVENTORY AREA 6 (WRIA 6)

Washington State is divided into 62 WRIsAs, delineating major watersheds. Puget Sound holds 19 of these WRIsAs, and the entirety of Island County is in WRIA 6. Island County is a sole-source aquifer, receiving all of its groundwater from rainfall that is collected in surface waters such as lakes and wetlands.

ISLAND COUNTY IS HOME TO MANY NATURAL RESOURCES SUCH AS:

**Public
lakes**



**Shellfish
growing
areas**



**Groundwater
recharge
areas**



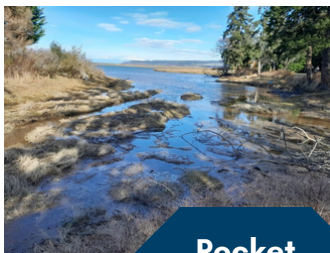
**Swim
beaches**



**Forage fish
habitat**



**Pocket
estuaries**



**State and
County
parks**



**Salmonid
habitat**

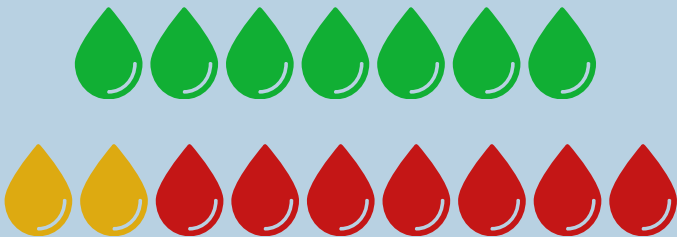


**Wildlife
refuges**



OVERALL STREAM HEALTH

Routine monitoring of 16 streams in Island County (shown right) yielded 7 with good water quality, 2 with moderate quality, and 7 with poor quality.

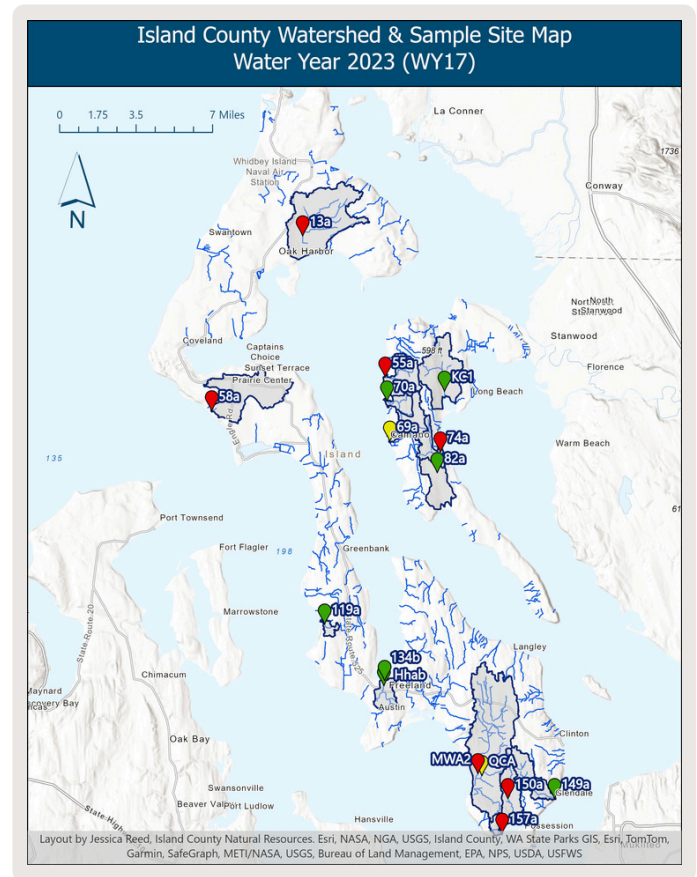


WATER QUALITY

Water quality is ranked Good, Moderate, or Poor based on comparison to the two-part WA State Water Quality Standard.

- Part 1: Annual Geometric Value shall be below 100MPN/100mL
- Part 2: No more than 10% of all samples collected shall exceed 320MPN/100mL

While other data such as temperature, pH, turbidity, conductivity, and dissolved oxygen are collected, it does not have bearing on the water quality ratings listed in this report.

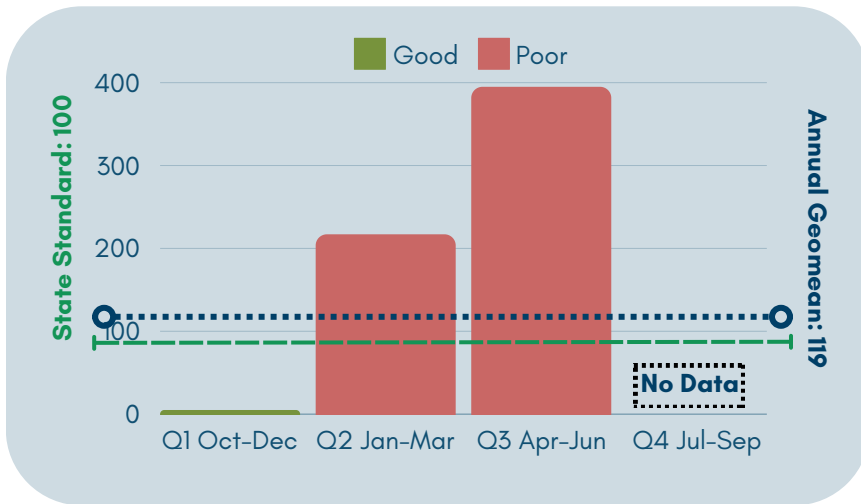


Keep reading to
learn about
each stream
sampled in
Island County.

SEASONAL GEOMEANS

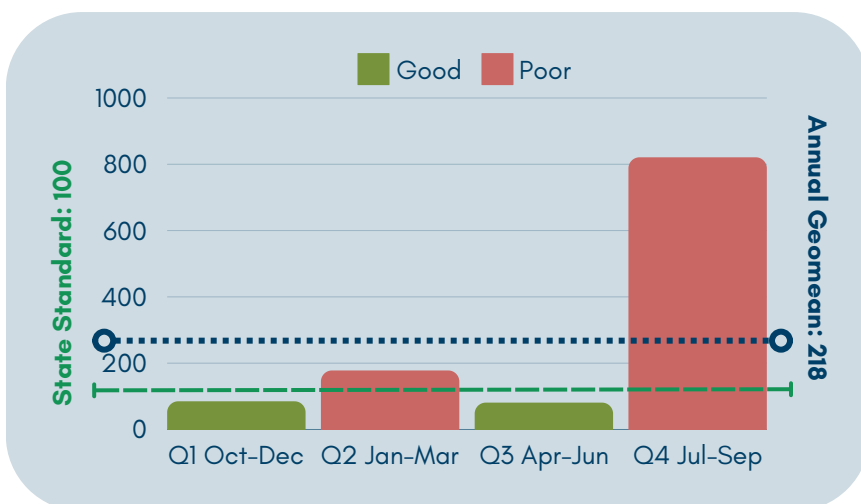
NORTH WHIDBEY

CRESCENT CREEK



- Water quality ranked poor for WY2023
- Annual Geomean: 119
- Highest seasonal geomoean: 395
- 5/15 samples (33%) exceeded State standards

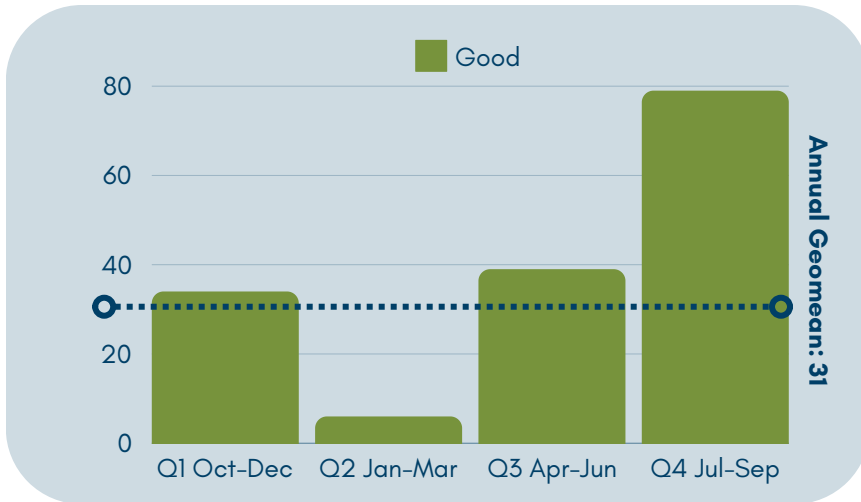
EBEY'S LANDING



- Water quality ranked poor for WY2023
- Annual Geomean: 218
- Highest seasonal geomoean: 821
- 10/23 samples (43%) exceeded State standards

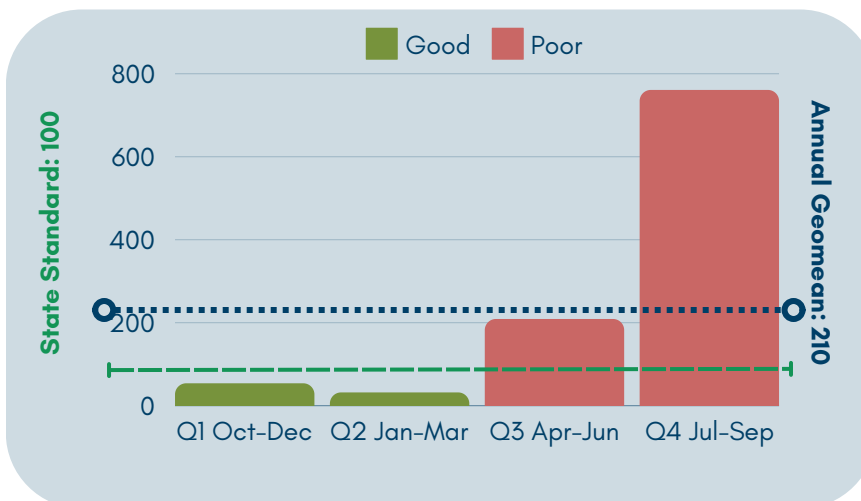
SOUTH WHIDBEY

GLENDALE CREEK



- Water quality ranked good for WY2023
- Annual Geomean: 31
- Highest seasonal geomean: 79
- 0/14 samples (0%) exceeded State standards

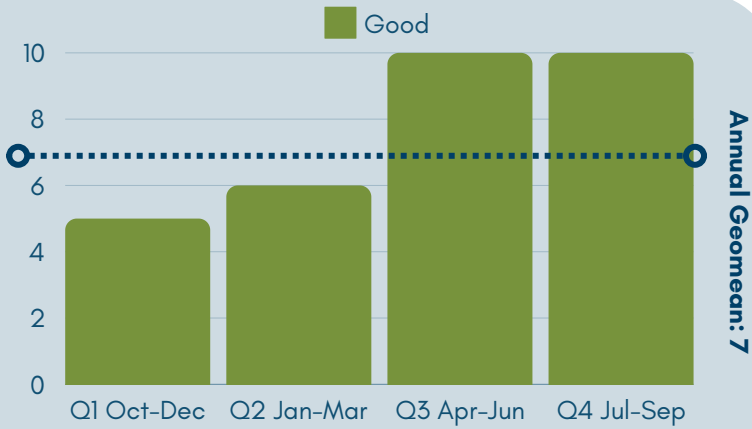
CULTUS CREEK



- Water quality ranked poor for WY2023
- Annual Geomean: 210
- Highest seasonal geomean: 761
- 12/24 samples (50%) exceeded State standards

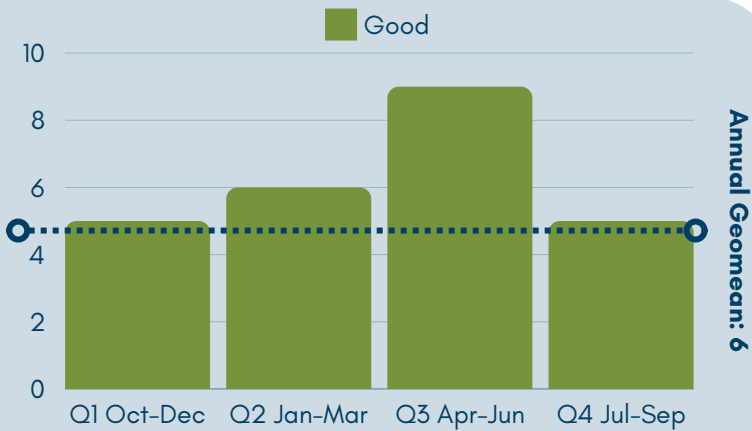
SOUTH WHIDBEY

S. WHIDBEY STATE PARK



- Water quality ranked good for WY2023
- Annual Geomean: 8
- Highest seasonal geomean: 10
- 0/15 samples (0%) exceeded State standards

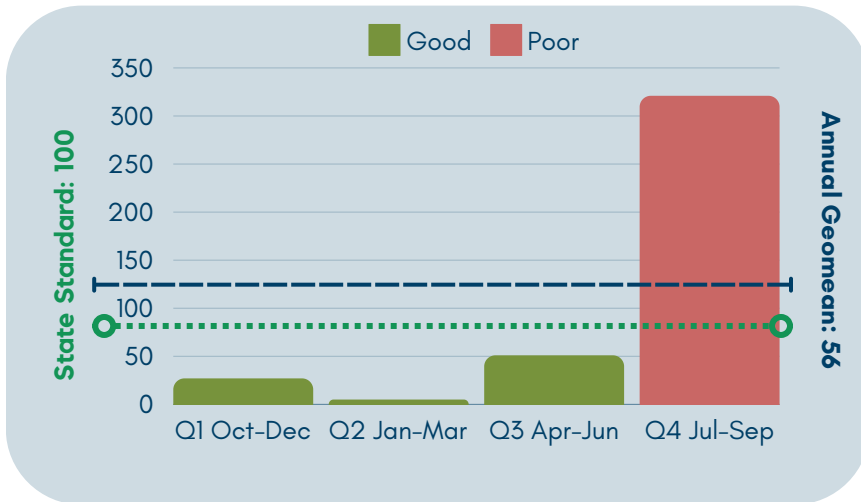
FREELAND PARK



- Water quality ranked good for WY2023
- Annual Geomean: 6
- Highest seasonal geomean: 9
- 0/14 samples (0%) exceeded State standards

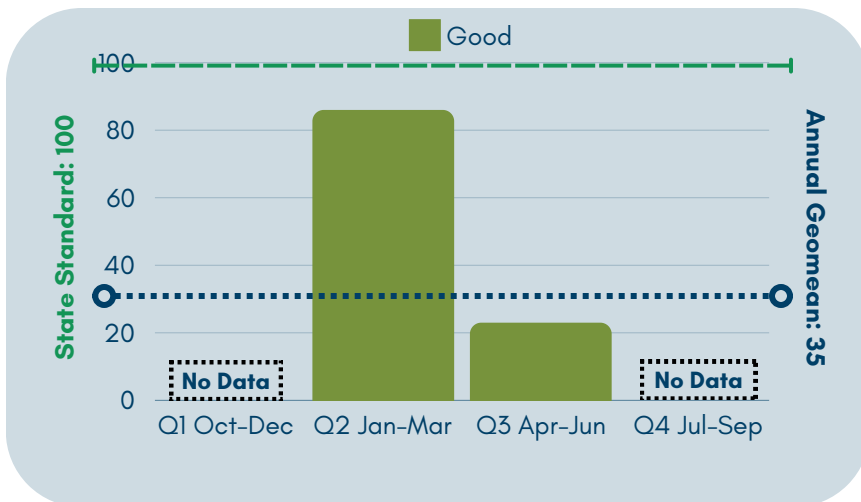
SOUTH WHIDBEY

SCATCHET CREEK



- Water quality ranked poor for WY2023
- Annual Geomean: 56
- Highest seasonal geomoean: 321
- 3/17 samples (18%) exceeded State standards

E. FREELAND PARK



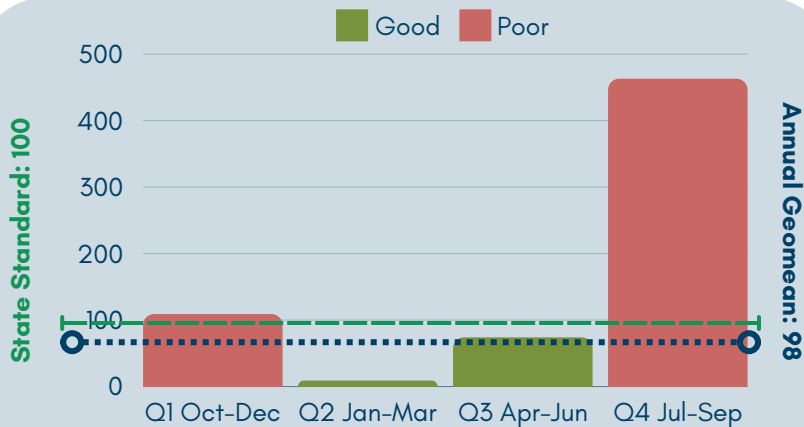
- Water quality ranked good for WY2023
- Annual Geomean: 35
- Highest seasonal geomoean: 86
- 0/6 samples (0%) exceeded State standards

SOUTH WHIDBEY

MAXWELTON CREEK



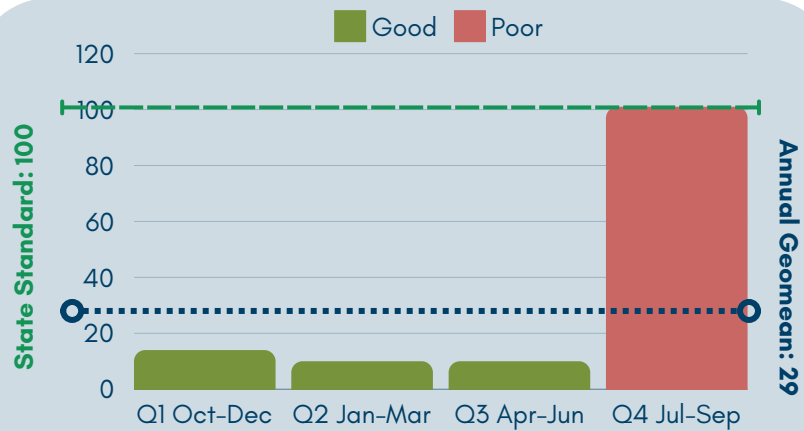
- Water quality ranked poor for WY2023
- Annual Geomean: 98
- Highest seasonal geomoean: 463
- 12/26 samples (46%) exceeded State standards



QUADE CREEK

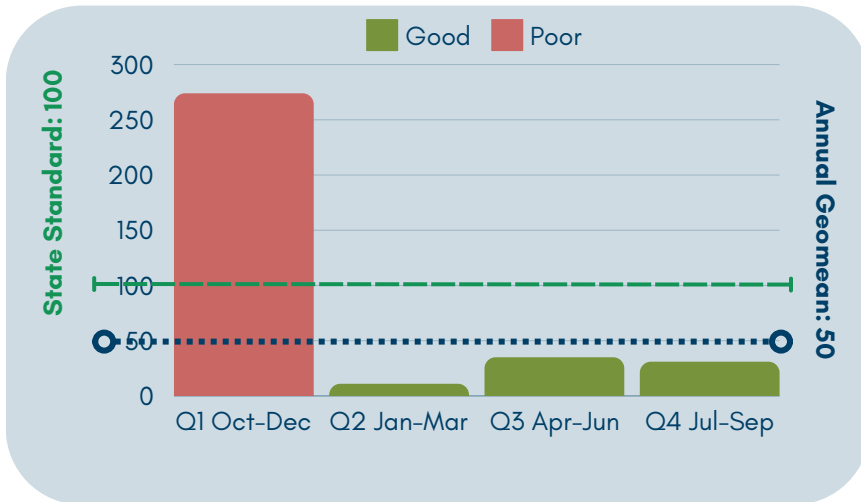


- Water quality ranked moderate for WY2023
- Annual Geomean: 101
- Highest seasonal geomoean: 86
- 1/14 samples (7%) exceeded State standards



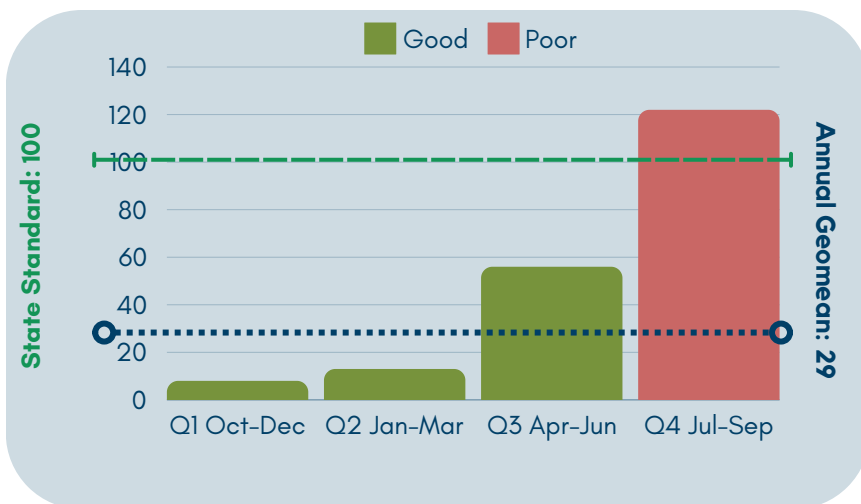
CAMANO

CARP CREEK



- Water quality ranked poor for WY2023
- Annual Geomean: 50
- Highest seasonal geomean: 274
- 4/18 samples (22%) exceeded State standards

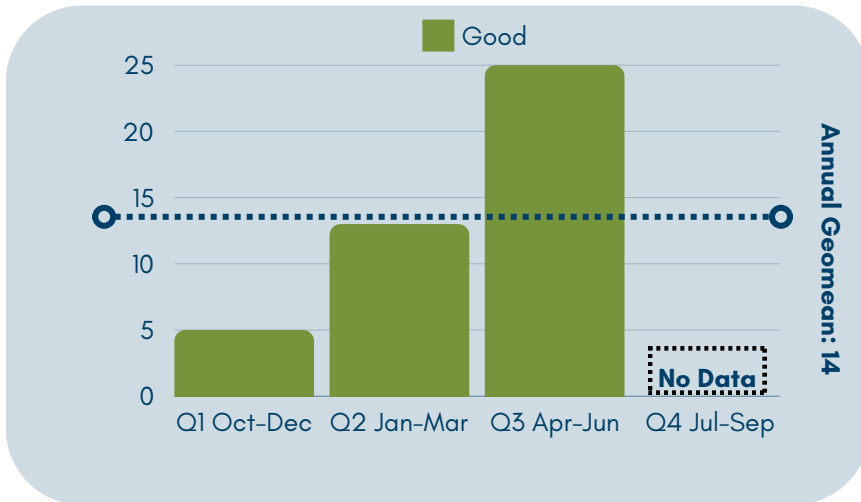
CHAPMAN CREEK



- Water quality ranked moderate for WY2023
- Annual Geomean: 29
- Highest seasonal geomean: 122
- 1/18 samples (6%) exceeded State standards

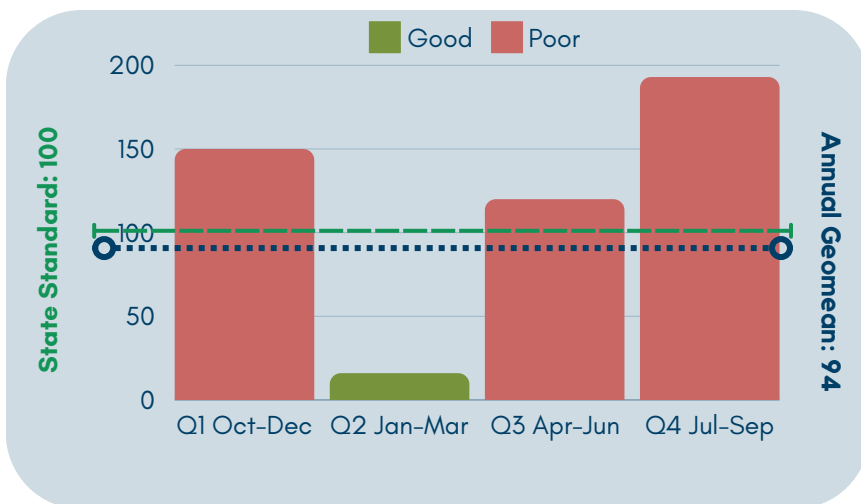
CAMANO

SUNSET CREEK



- Water quality ranked good for WY2023
- Annual Geomean: 14
- Highest seasonal geomean: 25
- 0/6 samples (0%) exceeded State standards

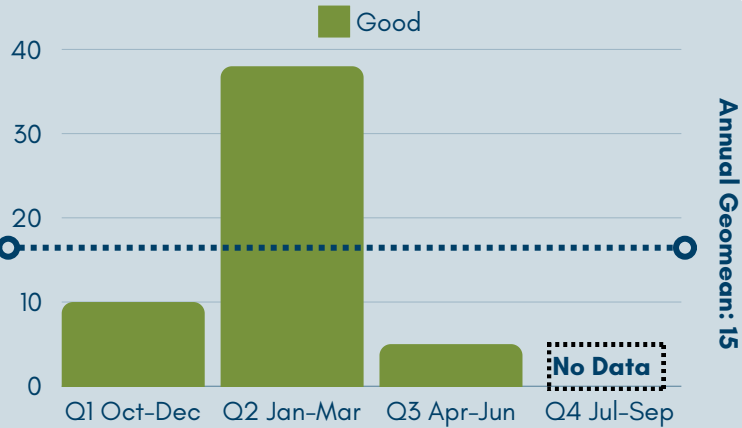
CAVELERO CREEK



- Water quality ranked poor for WY2023
- Annual Geomean: 94
- Highest seasonal geomean: 193
- 5/27 samples (19%) exceeded State standards

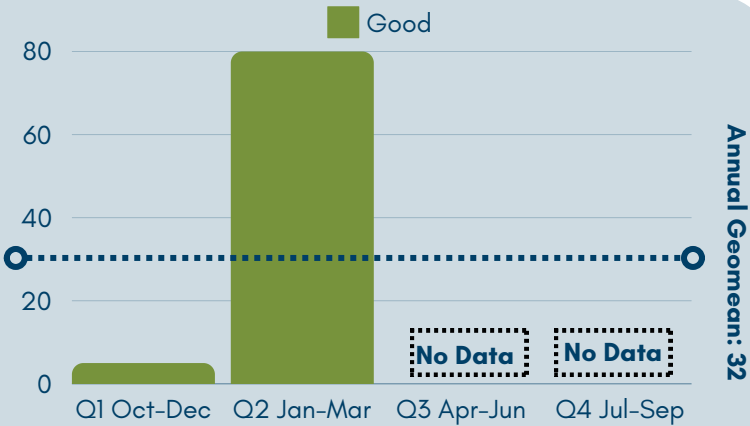
CAMANO

BONNIE LANE



- Water quality ranked good for WY2023
- Annual Geomean: 15
- Highest seasonal geomean: 38
- 0/6 samples (0%) exceeded State standards

KRISTOFERSON CREEK



- Water quality ranked good for WY2023
- Annual Geomean: 32
- Highest seasonal geomean: 80
- 0/3 samples (0%) exceeded State standards

WRAP UP



Island County SWQ Team routinely tested 16 streams for *E. coli* contamination between October 2022 and September 2023.

44% of streams were in **good** health

44% of streams were in **poor** health

12% of streams were in **moderate** health

*Health rating was determined based on the WA State standard for acceptable levels of *E. coli*

Stream health is important to shellfish harvesting beds, fish habitat, human & pet health, and groundwater health

You can help keep streams clean by properly disposing of pet waste, keeping natural plant buffers intact, maintaining septic system



WY2023

THANK YOU

CONTACT INFORMATION



dnr@islandcountywa.gov



www.islandcountywa.gov



ISLAND COUNTY DIVISION OF NATURAL RESOURCES

For more details on Island County water quality, including methods used and results of other parameters measured, please refer to the full Surface Water Quality Report, found on our website.