

IRTPO Executive Board Meeting

MAY 22ND, 2024

2024 STBG Call For Projects (TAC Recommendations)

STBG: Surface Transportation Block Grant



Scoring Criteria & Weighting

Project weighting established in 2018

- ▶ Safety 14.5%
- ▶ Equity 14.5%
- ▶ Access 13.6%
- ▶ Opportunities & Partnerships 10.9%
- ▶ Preservation 9.1%
- ▶ Stewardship 9.1%
- ▶ Economic Vitality 9.1%
- ▶ Mobility 8.2%
- ▶ Environment 7.3%
- ▶ Planning Consistency 3.6%

2024 Revaluated and Rounded Criteria

- ▶ Access 18%
- ▶ Safety 16%
- ▶ Mobility 15%
- ▶ Preservation 13%
- ▶ Equity & Environment 13%
- ▶ Stewardship 11%
- ▶ Opportunities and Partnerships 8%
- ▶ Economic vitality 6%

Planning Consistency removed & Equity and Environment combined

Scoring Discussion

			Ranking	Agency Request	TAC Recommendation
Project Proponent:	Port of South Whidbey		1	\$2,456,977	\$1,070,465
	Project: Clinton Passenger-Only Ferry Dock Replacement				
	Weighted Totals	4.7			
Project Proponent:	Island Transit		2	\$1,000,000	\$1,000,000
	Island Transit: Hydrogen Fueling & Maintenance				
	Project: Project				
	Weighted Totals	4.5			
Project Proponent:	Island Transit		3	\$1,000,000	\$1,000,000
	Project: Fixed Route Electric Bus Replacement				
	Weighted Totals	4.4			

Clinton Dock Passenger Ferry

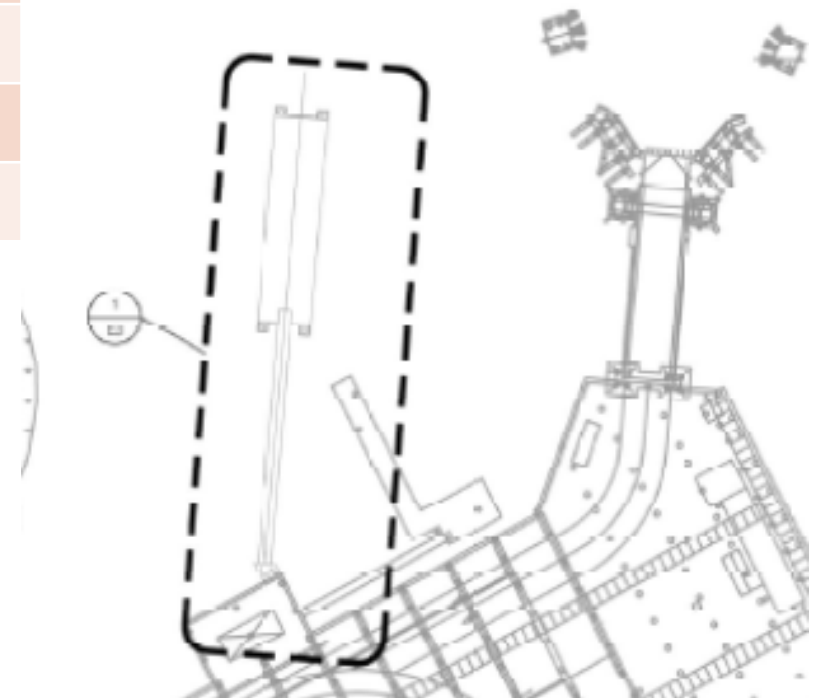
	Preliminary Engineering	Construction
Cost estimate	\$450,249	\$4,803,000
Awarded	\$319,000	\$1,768,083
Planned Port match	\$60,784	\$648,405
<u>APPLICATION:</u>	\$70,465	\$2,386,512

Location/Length

- ▶ Clinton Beach Park adjacent to the WSF Terminal in Clinton

Description

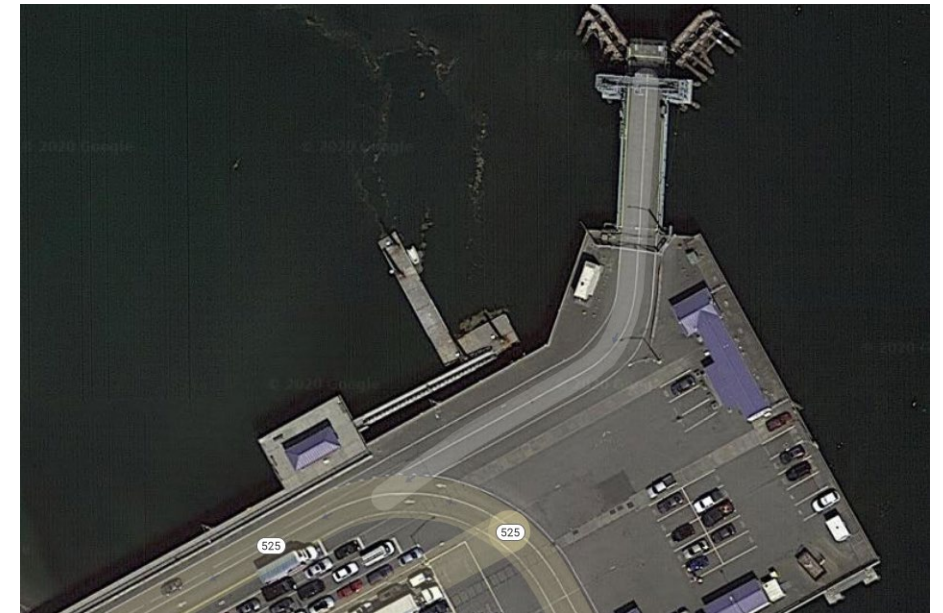
- ▶ Replacement of Passenger-Only Ferry Dock
- ▶ New dock float (25' x 100'), gangway (120'), and piles
- ▶ Float designed to accommodate electric vessel charging stations
- ▶ Remove/dispose of old piles and gangway



Clinton Dock Passenger Ferry

Access to the dock will comply with requirements of the American's with Disability Act

Project can take advantage of existing access to public transit in both Island County and Snohomish County



Clinton Dock before damage

Clinton Dock Passenger Ferry

PE is 90% complete

Clinton Dock is ideally located to effectively support Passenger-Only ferry service between Island County and Snohomish County

Project establishes and maintains key partnerships with Washington State Ferries and Island Transit

Project can support island region communities during emergencies and interruption of vehicle ferry service

A Clinton – Everett Passenger-Only Ferry routes was one of seven routes (out of 45 investigated) for further development by a study commissioned by the WA State Legislature and conducted by the Puget Sound Regional Council





Electric Bus Replacement & Infrastructure on Camano Island

IRTPO 05/22/2024

Electric Bus Overview

8

Total Cost / Funding Request

- ▶ \$3,000,000/ \$1,000,000

Location

- ▶ Camano Island

Description

- ▶ Replace a diesel bus at the end of its useful life with an electric bus and associated charging infrastructure



Image of Electric Bus provided by

TRI-MET



Island Transit

Electric Buses in Transit Service

- ▶ *Many agencies have them...*
- ▶ Electric buses have a shorter range, but Camano has shorter routes
- ▶ Variety of makes & models
- ▶ Purchased through state contract



Image of Island Transit's Lightning E-Motor all electric van

Electric Charging Infrastructure

- ▶ **Different charging strategies**
 - ▶ Pantograph
 - ▶ Plug-in
 - ▶ Inductive
- ▶ Smaller footprint fits better at Camano operating base
- ▶ Can be increased as needed
- ▶ Transformer needs



Image of Electric Bus Charging Station provided by

TRIMET

Coupeville Hydrogen Fueling Infrastructure

IRTPO 05/22/2024

Hydrogen Fueling Overview

12

Total Cost

\$7,000,000+ (current estimate)

- Hydrogen Fueling Station- \$7,000,000
- Modifications to existing facilities
Unknown cost

Location

Coupeville Operating Base

Description

- Island Transit needs to construct a fueling facility and modify its facilities for maintaining hydrogen vehicles. Agency staff is working with consultants to develop cost estimates.



Image of Hydrogen Fueling Station provided by Shutterstock

Hydrogen Fuel Cell Buses

Project Summary

Zero Emissions Transition Plan:

- ▶ Federal requirement
- ▶ Adopted in 2023 and calls for electric vehicles on Camano Island and hydrogen powered buses on Whidbey Island

Hydrogen Buses can go 370+ miles between refueling

Washington State

- ▶ Lewis County Transit
- ▶ Federal Hydrogen Hub
- ▶ Transit agency collaboration



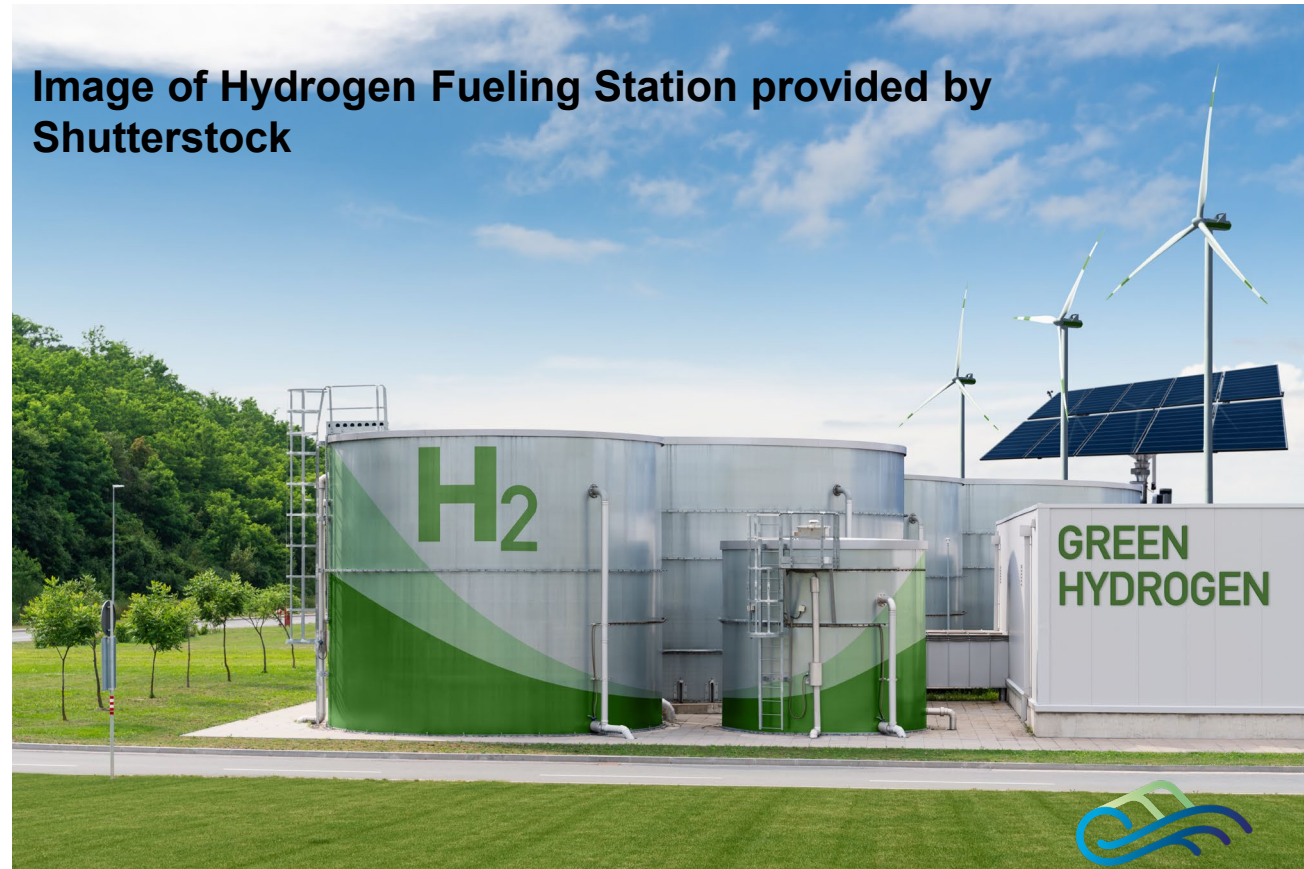
Image of Hydrogen Fuel Bus operated by Lewis County Transit provided by Owen Sexton/Daily Chronicle.

Coupeville Facilities- Planning & Preparation

14



Image of Hydrogen Fueling Station provided by Shutterstock



Island Transit

Project Ranking Final Totals

IRTPO 2023-2029 Fiscally Constrained Spending Plan									Four-Year Constrained			Remainder 6-YR RTIP		
STBG														
Lead Agency	Project Title	Approx. Cost	Funded	Match	Gap	Funding Type	Phase	Obligation	2024	2025	2026	2027	2028	2029
Island County	East Camano Drive/Cross Island Intersection Improvements	\$4,925,000	\$756,750	\$118,250	\$4,000,000	STBG	PE	2022						
			\$43,250	\$6,750		STBG	RW	2025		\$43,250				
Island County	East Camano Drive & McElroy Drive Roundabout	\$3,606,936	\$525,000	\$525,000	\$2,556,936		PE	2023						
IRTPO	Island RTPO Unified Work Program	\$748,335	\$177,334	\$27,676	\$543,325	STBG	PL	2025		\$88,667				
Oak Harbor	NE 7th Ave. Reconstruction	\$1,123,313		\$151,500	\$431,813	STBG	PE/CN	2024	\$1,391,958					
	NW Heller Street Overlay	\$360,609	\$311,927	\$48,682	\$0	STBG	PE					\$311,927		
	Midway Blvd Improvement	\$1,198,266	\$950,000	\$148,266	\$100,000	STBG	CN	2028					\$950,000	
WSDOT	SR 20 Shoulder Widening, Race Rd to Welcher Rd	\$4,700,000	\$3,180,000	\$191,165	\$1,328,835	STBG	ROW	2022			\$500,000	\$500,000	\$500,000	
Port of S. W.	Passenger-only Dock Replacement	\$5,253,249	\$2,087,083.00	\$709,189.00	\$2,456,977	STBG	PE/CN	2025	\$70,465	\$1,000,000	\$1,118,000	\$650,000		
Island Transit	Transit- Replacement Electric Bus and Charging Infrastructure	\$4,000,000	\$1,000,000.00		\$3,000,000	STBG	CN	2029						\$1,000,000
	Upgrading Coupeville base for hydrogen fueling	\$3,000,000	\$1,000,000.00		\$2,000,000	STBG	CN	2029						\$1,000,000
						STBG Total Programmed			\$1,391,000	\$1,131,917	\$1,618,000	\$1,461,927	\$1,450,000	\$2,002,029
						STBG Total Available Funds to Program for the Year			\$1,376,000	\$1,140,000	\$1,140,000	\$1,140,000	\$818,073	\$1,140,000
						Total funds Obligated								
						Remainder			\$15,000	\$8,083	\$478,000	\$321,927	\$631,927	\$862,029

Backups

Scoring Criteria

Equity

Developing transportation improvements that target disadvantaged and/or underserved populations.

Safety

Provide for and improve the safety and security of transportation customers and the transportation system.

Access

Promoting transport options that allow people to reach basic needs, employment, school, and other high-value activities without excessive financial or time costs.

Opportunities & Partnership

Project leverages alternative funding sources and emphasizes partnerships between agencies and/or stakeholders.

Preservation

Maintain, preserve, and extend the life and utility of prior investments in transportation systems and services.

Stewardship

Continuously improve the quality, effectiveness, and efficiency of the transportation system.

Economic Vitality

To promote and develop transportation systems that stimulate, support, and enhance the movement of people and goods to ensure a prosperous economy.

Mobility

Improve the predictable movement of goods and people throughout Washington State, including congestion relief and improved freight mobility.

Environment (Combined with Equity)

Enhance Washington's quality of life through transportation investments that promote energy conservation, enhance healthy communities, and protect the environment.

Planning Consistency (Removed)

~~Project is consistent with regional and local planning efforts or otherwise demonstrates support.~~