



## ISLAND COUNTY PUBLIC HEALTH

### Administration

PO Box 5000

Coupeville, WA 98239

P: 360.679.7350 F: 360.679.7390

## ISLAND COUNTY COVID-19 Updated Community Guidance

June 17, 2021

For schools (2020/21) please see [this updated information.](#)

For schools (2021/22) please see [this updated information.](#)

**\*Addendum to June 11th Community Guidance: An update to Surveillance numbers was provided after publication of Community Guidance. Here are the numbers and data for June 11, 2021: A case rate of 45.98 cases per 100,000 was calculated for the two-week period of May 28th, 2021 to June 10th, 2021. Island County has 1,812 confirmed COVID-19 cases, including 30 deaths.**

Island County Public Health wants to make sure that the citizens of Island County have access to reliable guidance surrounding COVID-19. We update guidance weekly to help inform our community. For archived copies of this community guidance, visit the COVID-19 section of our [webpage](#).

### **Numbers and Data**

A case rate of 50.70 cases per 100,000 was calculated for the two-week period of June 4th, 2021 to June 17th, 2021. Island County has 1,837 confirmed COVID-19 cases, including 29 deaths. \*Note, Surveillance numbers will be updated every Thursday. Current numbers are posted on our COVID webpage.

### **Update from Department of Health (DOH)**

Newest numbers: DOH reported a total of 409,820 confirmed cases as of 11:59 p.m. on June 15th. There have been 5,801 COVID-19 deaths in Washington. For the most recent tally of cases by county, demographics, and more, visit the [Department of Health's Dashboard](#) and the state's [Road to Recovery Metrics dashboard](#). Race and ethnicity data are included on the DOH dashboards, as well as in specific reports.

VACCINE DOSES GIVEN
Total number of COVID-19 vaccination doses administered in Island County by a vaccine provider:
<b>95,653</b>
Last updated: 6/14/21 at 11:59pm. <i><a href="#">Data provided via WA DOH</a></i>

## **Vaccine Information**

- Many providers have open appointments with walk-ins available.
- Johnson & Johnson is a one-shot vaccine.
- Pfizer and Moderna are a two-shot series, make sure your second dose is completed.
- You need to get your second dose of the 2-dose vaccines for them to be completely effective.
- Pfizer is currently approved for those 12 and older. If you are a young adult, search for Pfizer on the [vaccine locator](#).

Are you or someone you know experiencing vaccine hesitancy? The Washington State Department of Health is a great resource for addressing vaccine hesitancy. Visit the Washington State Department of Health's [resource page](#) about "Addressing Vaccine Hesitancy" for more details.

## **Mobile Vaccination Team Events**

Island County continues to provide mobile vaccination events.

Current locations are:

- ➔ June 26th Island County Historical Museum, Coupeville 11:00am to 3:00pm
- ➔ July 4th Independence Day Celebration at Windjammer Park, Oak Harbor 10:00am to 6:00pm
- ➔ July 15th to 18th Whidbey Island Fair, Langley 12:00pm to 5:00pm each day

These vaccination events are open to the public. All three vaccines, Pfizer, Moderna and Johnson & Johnson, available! Ages 12+ welcome! No appointment, ID, or insurance necessary. Stop by and get your vaccine!

Our Mobile Vaccination Team can come to your organization or facility to give vaccines. Pop-up events can be established at most locations for a walk-up style clinic.

Schedule a Mobile Vaccination Clinic or Pop-Up Clinic today by contacting Liz Smith by email at [e.smith@islandcountywa.gov](mailto:e.smith@islandcountywa.gov) or by phone at 360-320-5000. Watch our [webpage](#) for more dates to be added!

## **Labor and Industries Update**

L&I has updated their guidance for masking in the workplace. Learn more [here](#). The new guidance does not change masking rules for health care settings like hospitals, long-term care, doctor's offices, correctional facilities, homeless shelters, schools, childcare centers or day camps. And the federal order requiring masks on public transportation remains in place.

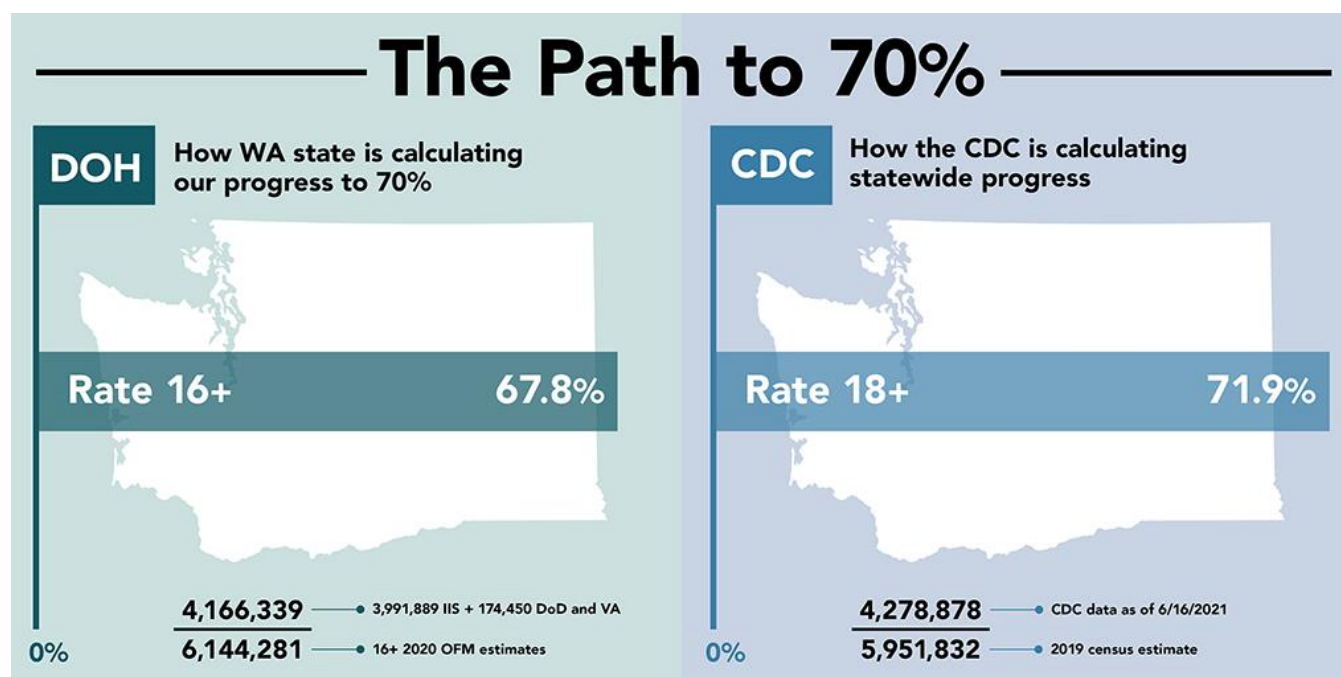
Is it clear who must wear masks when entering your establishment? Many customers have difficulty discerning the protocols to follow without a sign on the door, letting them know. We have flyers [here](#) that you can print out to clear up the confusion. They are available in both English and Spanish.

## **Washington State Department of Health Update**

The Washington State Department of Health (DOH) is aware there are differences between vaccination data displayed in the state's data dashboard compared to vaccination data in the [Centers for Disease Control and Prevention's \(CDC\) COVID Data Tracker](#). DOH understands that there is a lot of excitement and anticipation surrounding the 70% vaccination threshold statewide. While the state hasn't achieved it yet (at last check, we are at 67.8%), the people of Washington are getting closer every day. The state's data dashboard represents the most accurate information the department has control over, but it is likely vaccination rates are higher for the following reasons:

- The state goal and dashboard reports for people 16 and up, and the federal government is reporting for people 18 and up.
- DOH also uses population estimates from the Office of Financial Management, while the federal government uses census data.
- DOH is including 153,189 DoD and VA people who have initiated vaccine to the current statewide total. However, the federal government gets data from DoD, VA, Bureau of Prisons, and potentially a few other sources that don't get automatically funneled to DOH state totals.

Read the article from which this information came from [here](#).  
 Read Gov. Inslee's statement about reopening numbers [here](#).



### Washington State Office of the Attorney General Update

The Attorney General's Office and Washington's Lottery are urging Washingtonians to be wary of potential scams associated with the state's "Shot of a Lifetime" lottery for vaccinated Washingtonians. The program's drawings will be held on Tuesdays through July 13, and feature \$250,000 and \$1 million cash prizes, sporting event tickets, technology and tuition credits, among other incentives. Vaccinated individuals who are in the state's Immunization Information System are automatically entered into the drawings. The primary method the Lottery will use to contact drawing winners is by phone, but representatives with the Lottery will never ask for bank account information or Social Security numbers over the phone. The Lottery may also contact some winners by email or, as a final method of outreach, text message. If you are wary of a call, voicemail, email or text that purports to be from the Lottery, contact Washington's Lottery directly at 360-810-2888 to verify that they are a Lottery representative. Read the article from which this information came from [here](#).

### Governor Jay Inslee Update

On June 11th, Gov. Jay Inslee [announced](#) further business and employee guidance consolidations and rescissions for some industries. Unless otherwise specified, the industries will no longer need to follow industry-specific guidance. They will instead only need to follow general requirements, which include the COVID-19 workplace health and safety measures established by the [Department of Labor & Industries](#) (L&I).

Read the full official memo [here](#).

Read all business and employee guidance [here](#).

Read the article from which this information came from [here](#).

On June 10th, Gov. Jay Inslee extended a [proclamation](#) allowing for the expansion of the Family Emergency Assistance Program (FEAP) to assist families both with and without children.

This proclamation is issued under the authority granted to the governor by [SHB 1151](#), which passed the legislature earlier this year. This program will help many families who continue to suffer economic hardship during the pandemic. The proclamation goes into effect on June 14, and remains in effect until June 30 or until funding is exhausted, whichever occurs first.

Read the full proclamation [here](#).

Read the article from which this information came from [here](#).

### **WhidbeyHealth Update**

Due to the widespread availability of vaccine providers on the island and the sharp decrease in demand at WhidbeyHealth for coronavirus vaccination appointments, WhidbeyHealth will cease operating its public vaccine clinic on June 30<sup>th</sup>, 2021. For the media release, click [here](#).

For a full list of providers and testing locations visit the [Island County Public Health COVID page](#).

### **Island County Public Health**

Island County is participating in the distribution of Everlywell COVID test kits. This is a free resource to the public. To be eligible, individuals must be Island County residents that are having a hard time locating COVID-19 testing (this includes timely access). The Everlywell test kits can only be picked up at our Camano and Coupeville offices. Please call the COVID-19 Call Center at 360-678-2301 to have the qualifying survey completed, or complete the survey here: [Cognito Forms](#). Once the survey is completed, there will be a follow-up call to ensure eligibility, and then a pick-up location for the test kit will be chosen.

**The Island County Public Health COVID-19 webpage is an excellent resource with links for specific guidance updates. Click [here](#) to find the resources you need.**

### **Thank You**

Island County Public Health would like to thank our community partners, volunteers, providers, vaccination teams, and people assisting the community with information and obtaining appointments. Please remember that everyone is doing their best and continue to be patient through this process.

### **More Information**

If you have questions or concerns about COVID-19 in Island County, start by visiting our [website](#), [Facebook](#) page, or email us at [PubHealth@IslandCountyWa.gov](mailto:PubHealth@IslandCountyWa.gov). If you would like to speak to someone directly about COVID-19, the Island County Call Center can be reached at **360-678-2301**; Monday through Friday, 8:00am to 4:30pm.

We also offer our COVID-19 Information Line: **360-678-5111 ext. 6000**. This is a pre-recorded message in English and Spanish for community members to call for general information about COVID-19.

The [WA DOH COVID-19 Vaccine website](#) remains the most up-to-date source of information regarding the safety, phasing and availability of COVID-19 vaccine in Washington, as well as the [Centers for Disease Control's Vaccine website](#).