



ISLAND COUNTY PUBLIC HEALTH

Administration
PO Box 5000
Coupeville, WA 98239
P: 360.679.7350 F: 360.679.7390

PRESS RELEASE

For immediate release

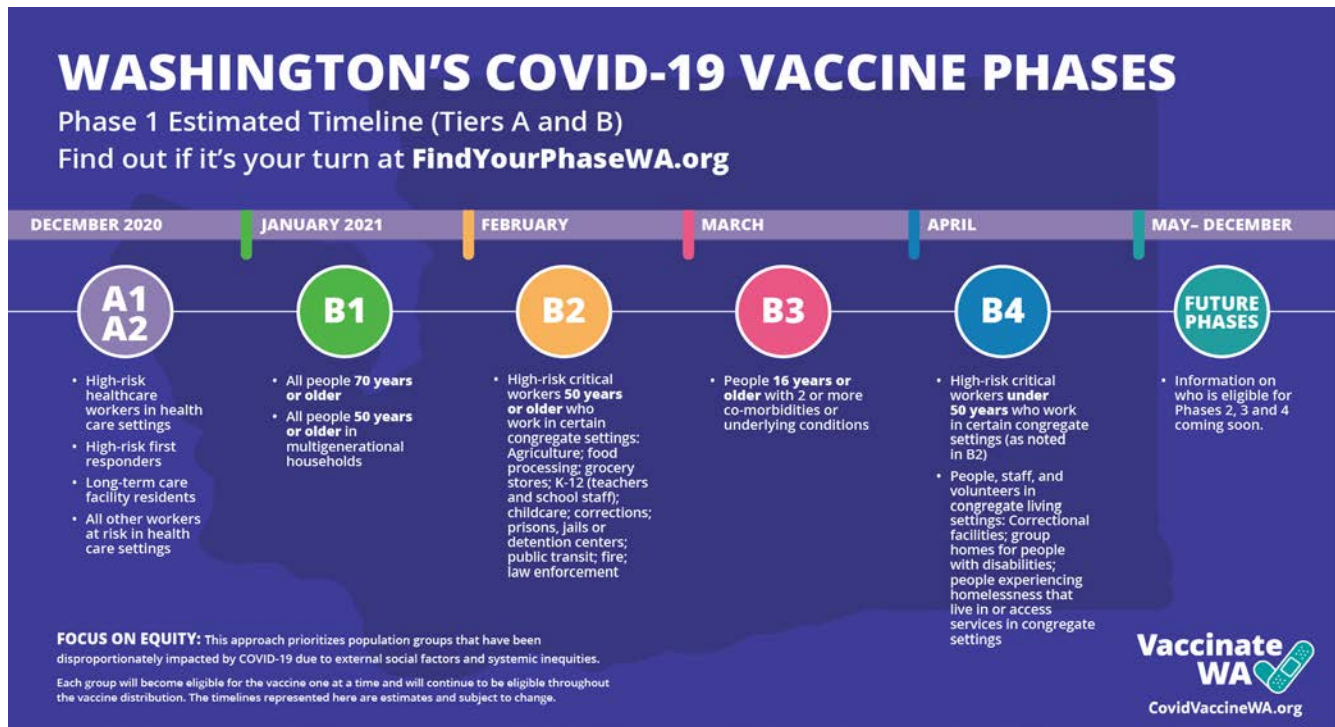
STATEMENT REGARDING COVID-19 VACCINATIONS

Island County, January 8, 2021:

Vaccination Plan

The Washington State Department of Health (DOH) issued an update regarding Washington's COVID-19 vaccine phases, and the launch of a new online tool to find out when it is your turn to receive the vaccine. The tool will be available on January 18, and the link to access it will be published at that time.

The vaccination plan is currently focused on individuals who fall into the A1, A2, and B1 tiers. The chart below provides details on a timeline for Phase 1, tiers A and B. The Phase 1, tiers A1 and A2 populations are eligible to receive vaccine now. Phase 1, tier B1 will be eligible to receive vaccine soon. We understand our communities are eager to be vaccinated and we appreciate your patience while we follow the guidelines established by the DOH.



Vaccination Providers

Currently, the vaccination providers for Island County are WhidbeyHealth and Island Drug. We are aware that these providers cannot easily serve Camano Island residents; Island County Public Health (Public Health) is working with community partners to establish additional vaccination providers. All vaccination providers must meet the same requirements for providing vaccinations. Please do not call Public Health requesting vaccination or to be put on a waitlist for future phases.

Appointments are recommended at Island Drug. Please visit <http://www.islanddrug.com/pages/covidvaccine> for details, including contact information for their COVID Vaccine Team. Online bookings will be available at the same link for the public upon transition to B1. You can also sign up for email notifications at the above address.

WhidbeyHealth is looking forward to begin vaccinating the community in tier B1 and are finalizing the ways and means in which they will schedule appointments. WhidbeyHealth will publish this information next week. They are continuing to provide second doses to the A1 and A2 community. Please do not call the hospital or the Primary Care or Walk-In Clinic offices; they are still finalizing details.

Tracking Vaccine Data

DOH, in partnership with Microsoft, will launch a new vaccine dashboard next week. It will be the state's main source for regular vaccine data reporting. The dashboard will include vaccine ordering and administration data, including breakdowns by county and by demographics. It should be updated three times a week.

Local Vaccination Data Update

At the time of this writing, the number of doses given in Island County is approximately 1,170.

Additional Updates and Resources

If you are seeking additional updates and information on the vaccination process, Public Health recommends visiting the following resources for updated facts and resources:

- [Getting Vaccinated for COVID-19](#) (PDF)
- [WA DOH Coronavirus \(COVID-19\) Vaccine](#) (this resource includes a Frequently Asked Questions)
- [CDC COVID-19 Vaccine Resources](#)