



AIR INSTALLATIONS COMPATIBLE USE ZONES/ACCIDENT POTENTIAL ZONES (AICUZ/APZ)

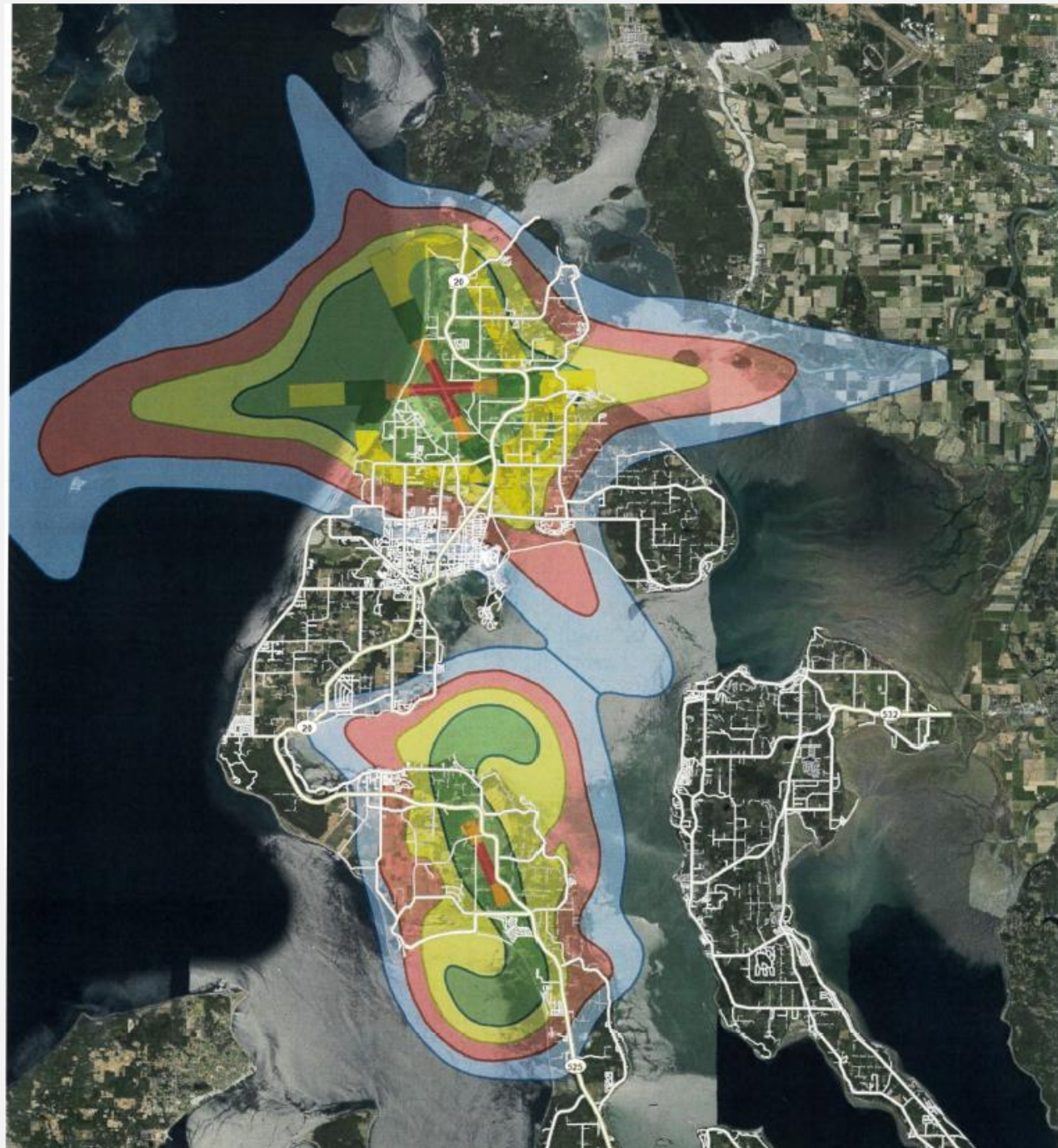
2021 AICUZ Study for Naval Air Station Whidbey Island (NASWI)
Updated Maps for Noise Zones and Accident Potential Zones

SUMMARY

- NASWI AICUZ
- Current Maps from 2005
- Latest AICUZ Study completed in 2021
- Adoption Process

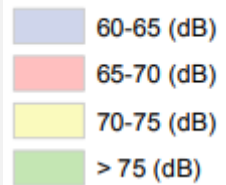


EXISTING 2005 MAPS

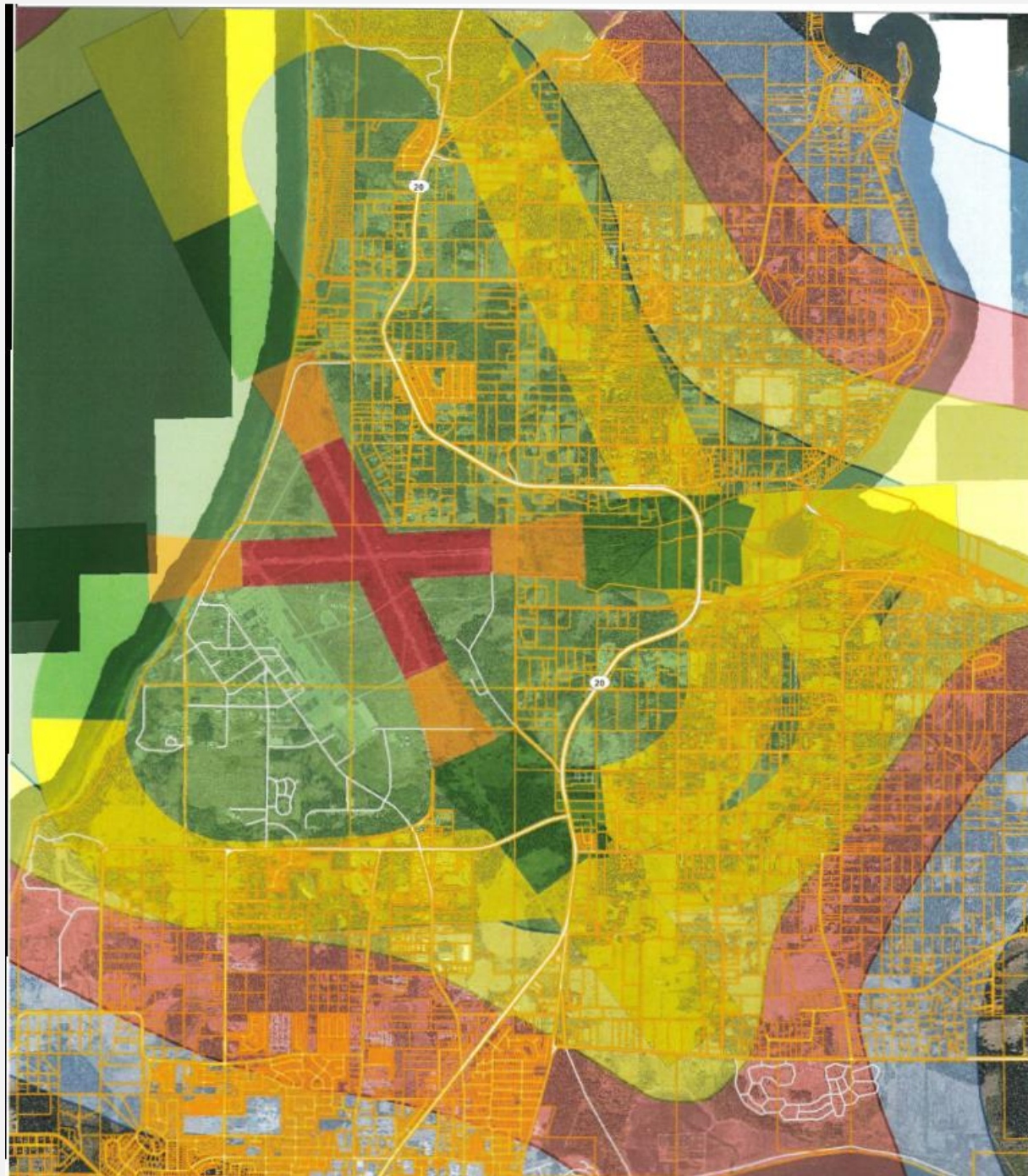
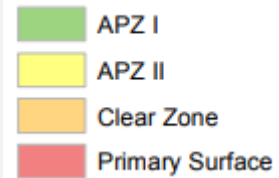


AULT FIELD EXISTING

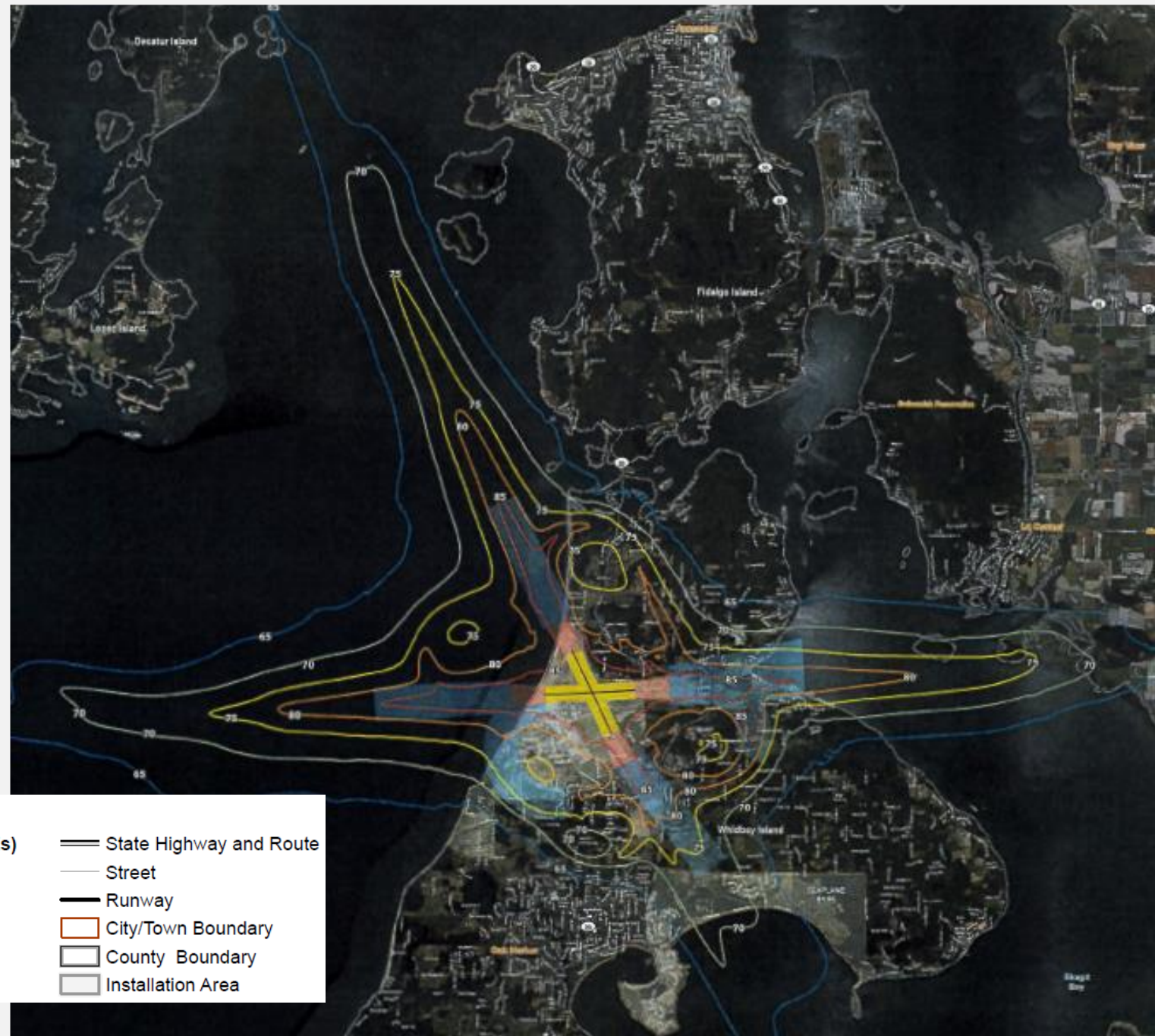
Noise Contours



Zone



AULT FIELD PROPOSED



Legend

Noise Contour

- 65 dB DNL
- 70 dB DNL
- 75 dB DNL
- 80 dB DNL
- 85 dB DNL

Accident Potential Zones (APZs)

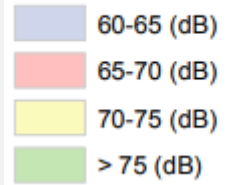
- Primary Surface
- Clear Zone
- APZ I
- APZ II

State Highway and Route

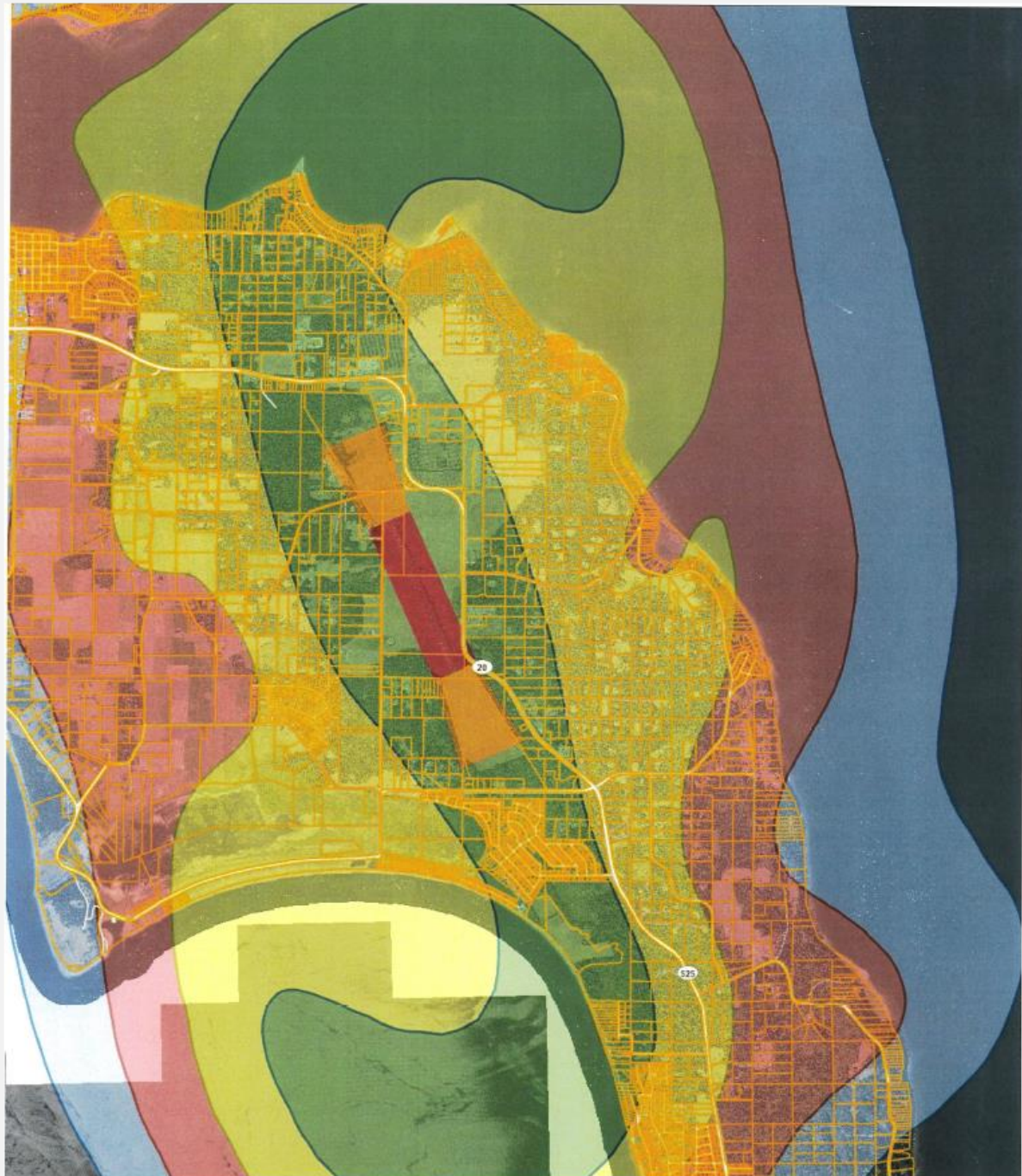
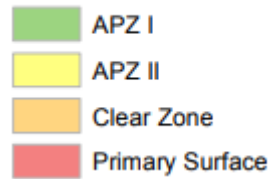
- Street
- Runway
- City/Town Boundary
- County Boundary
- Installation Area

OUTLYING FIELD COUPEVILLE EXISTING

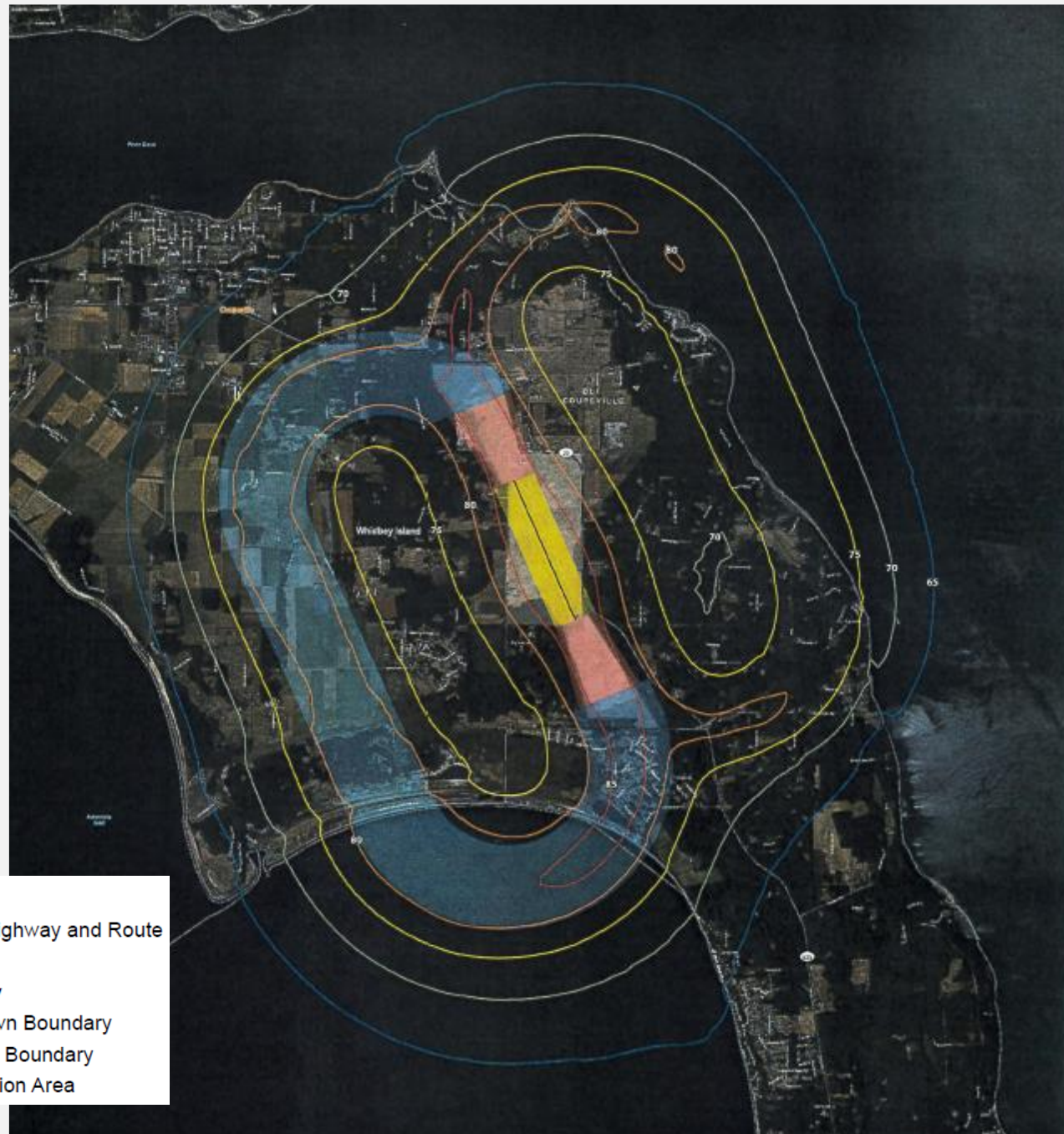
Noise Contours



Zone



OUTLYING FIELD COUPEVILLE PROPOSED



Legend

Noise Contour

- 65 dB DNL
- 70 dB DNL
- 75 dB DNL
- 80 dB DNL
- 85 dB DNL

Accident Potential Zones (APZs)

- Primary Surface
- Clear Zone
- APZ I
- APZ II

Infrastructure

- State Highway and Route
- Street
- Runway
- City/Town Boundary
- County Boundary
- Installation Area

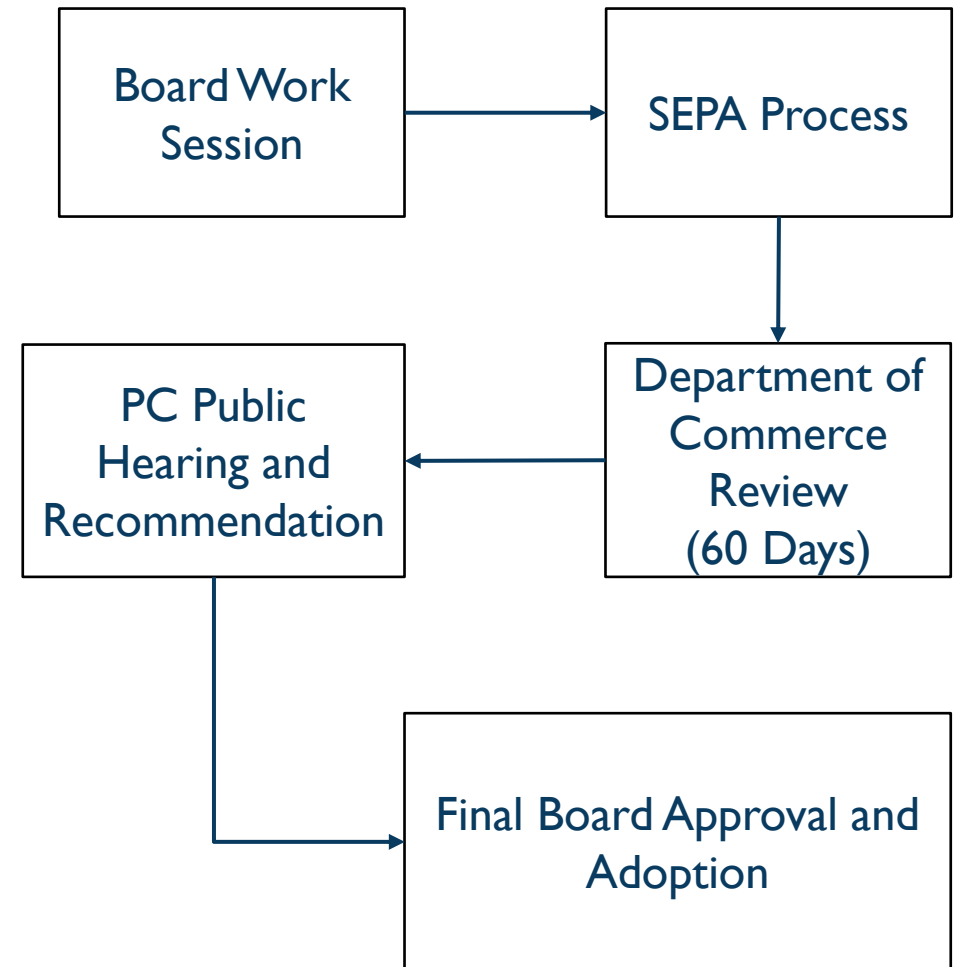
DEVELOPMENT CONSIDERATIONS



- New APZ for OLF Coupeville, elimination of portion of the Ault Field APZ
- Would not significantly hamper development
- Subdivision and Single-Family Residences still allowed



NEXT STEPS





QUESTIONS?

